



How to Adjust Fine Lines

GX Print Server for B9 Series Copier/Printer

Version 2.1

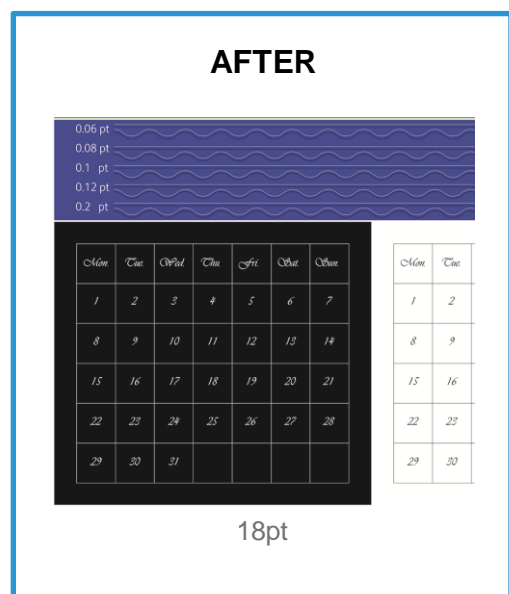
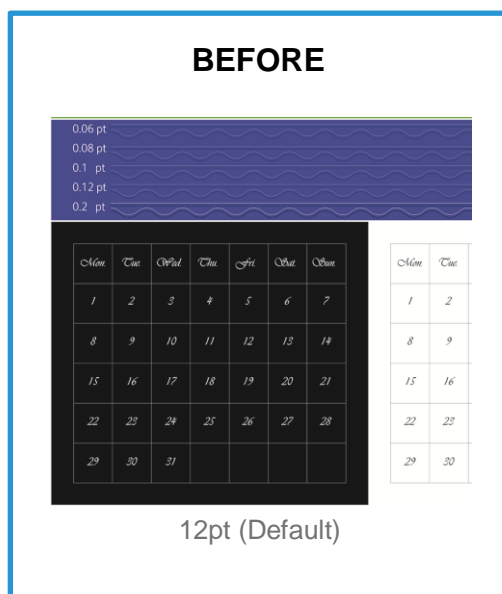
Overview

This exercise will demonstrate the ability to adjust the default “Minimum Line Width” of fine lines on a printed output. This feature can greatly improve the thickness of fine line detail.

Objective

By the end of this exercise users will be able to:

- Navigate to the location of the setting on the GX Print Server
- Make an adjustment to the default value
- Compare the results

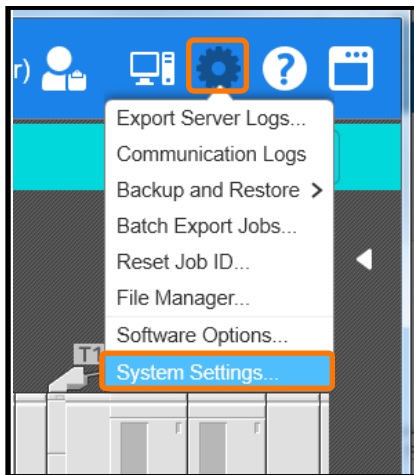


Adjust Fine Lines

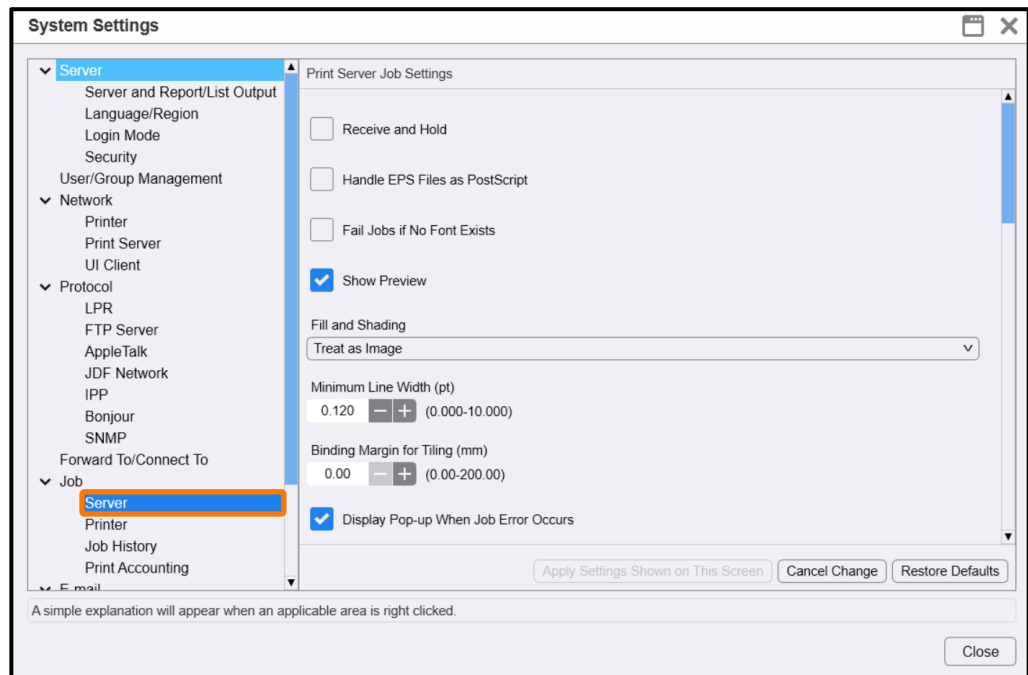


Print a sample file with the default setting before making the following adjustment.

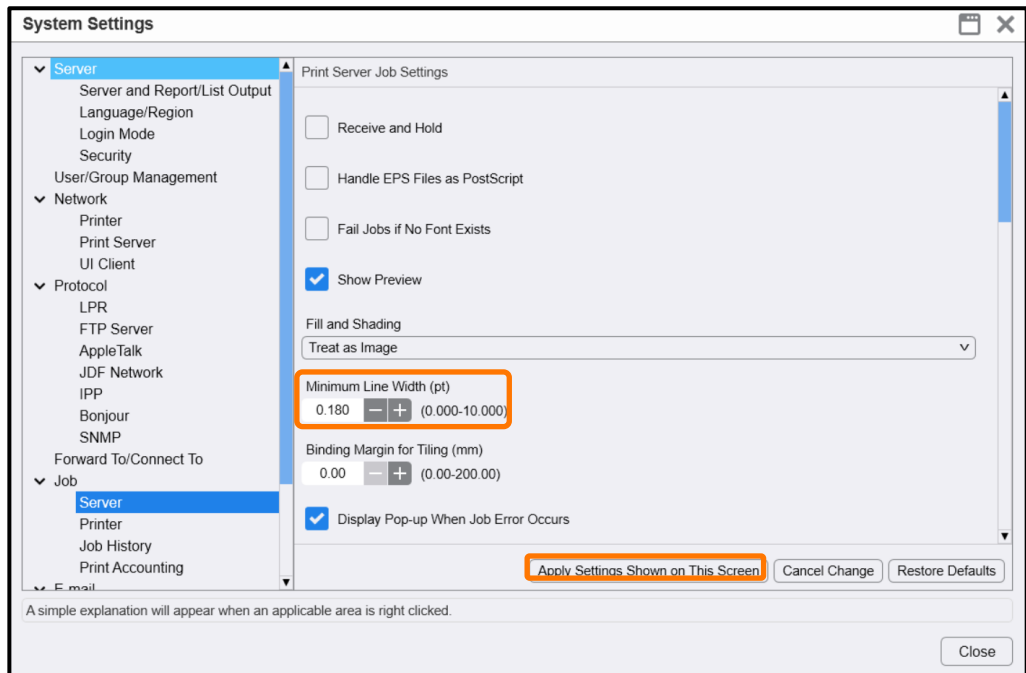
1. Log in as Administrator.
Contact your device administrator for the login details. If the login details have been misplaced, contact FUJIFILM Business Innovation customer support via Live Chat at: <https://support-fb.fujifilm.com>
2. Select **[Settings]** > **[System Settings]**.



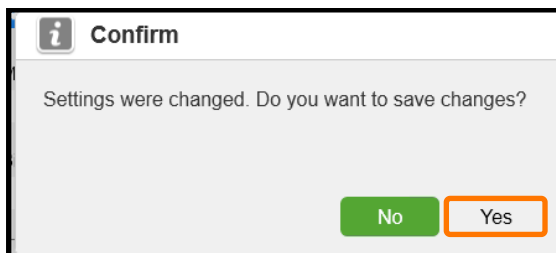
3. Select **[Server]** in [Job Settings].



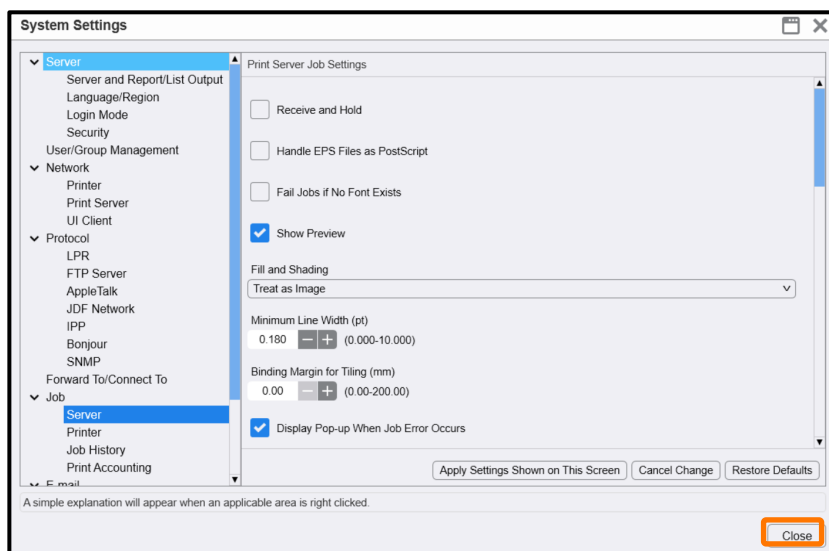
4. Change the value of **[Minimum line Width]** (Eg. 0.180 pt) and click **[Apply Settings Shown on This Screen]**.



5. Click **[Yes]** to save changes.



6. Click **[Close]**.



Print a sample file with your new settings to compare to the defaults.

Congratulations you have now completed this exercise.