



How to Change the View of the Job List

GX Print Server for B9 Series Copier/Printer

Version 2.1

Overview

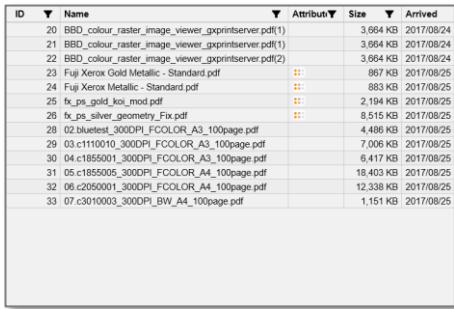
This exercise will demonstrate the ability to configure the view of the job list on the GX Print Server “Job Manager”. The user can easily change the view of Processing and Completed job lists.

Objective

By the end of this exercise users will be able to:

- Find the location of the setting on the GX Print Server
- Configure the view of job list

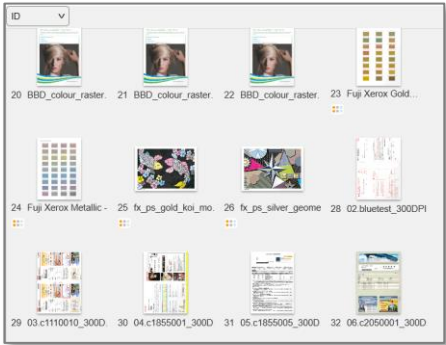
BEFORE



ID	Name	Attribut	Size	Arrived
20	BBD_colour_raster_image_viewer_gxprintserver.pdf(1)		3,664 KB	2017/08/24
21	BBD_colour_raster_image_viewer_gxprintserver.pdf(1)		3,664 KB	2017/08/24
22	BBD_colour_raster_image_viewer_gxprintserver.pdf(2)		3,664 KB	2017/08/24
23	Fuji Xerox Gold Metallic - Standard.pdf	::	867 KB	2017/08/25
24	Fuji Xerox Metallic - Standard.pdf		883 KB	2017/08/25
25	fx_ps_gold_koi_mod.pdf	::	2,194 KB	2017/08/25
26	fx_ps_silver_geometry_Fx.pdf	::	8,515 KB	2017/08/25
28	02.bluetest_300DPI_FCOLOR_A3_100page.pdf		4,486 KB	2017/08/25
29	03.c1110010_300DPI_FCOLOR_A3_100page.pdf		7,006 KB	2017/08/25
30	04.c1855001_300DPI_FCOLOR_A3_100page.pdf		6,417 KB	2017/08/25
31	05.c1855005_300DPI_FCOLOR_A4_100page.pdf		18,403 KB	2017/08/25
32	06.c2050001_300DPI_FCOLOR_A4_100page.pdf		12,338 KB	2017/08/25
33	07.c3010003_300DPI_BW_A4_100page.pdf		1,151 KB	2017/08/25

Default view of Job List

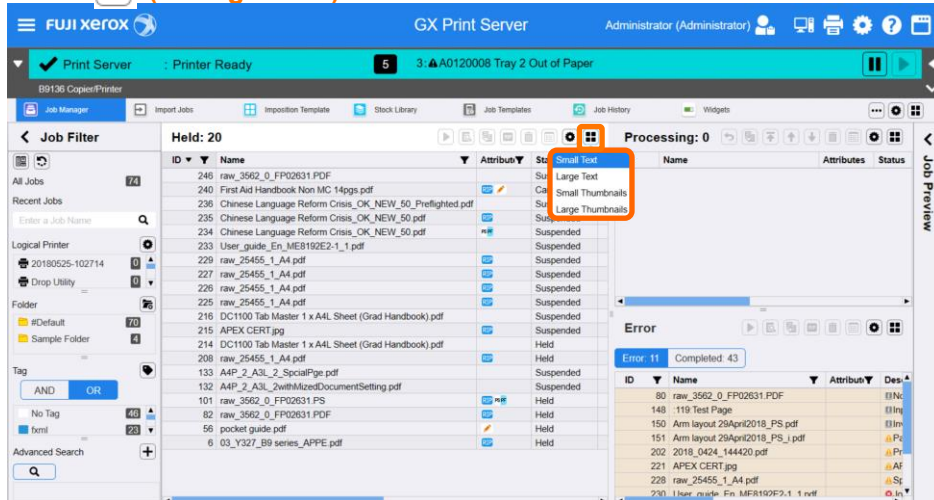
AFTER



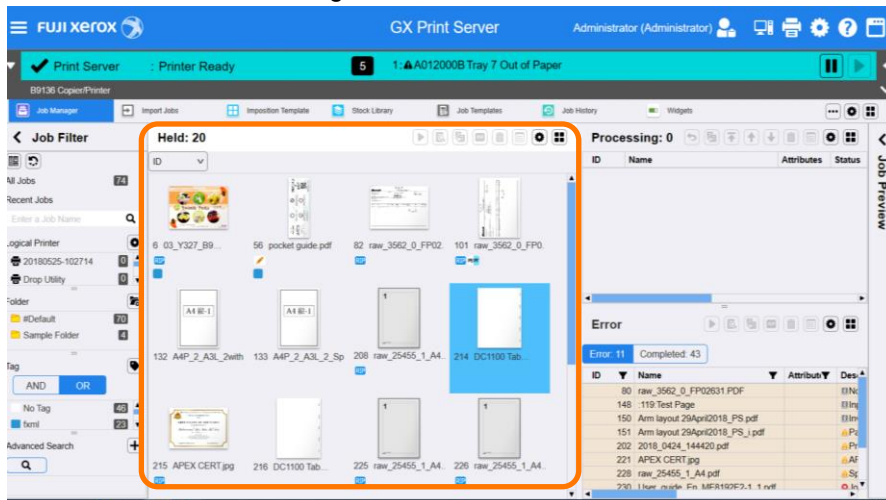
Your favourite view of Job List

Change View of Job List

1. Select  (Change View) icon on the Held list.



2. Choose a view from [Small Text], [Large Text], [Small Thumbnails], and [Large Thumbnails].
3. The Job List view has changed as selected.





You can also configure different views for each job list. For example, it can be selected as Large Thumbnail for Hold, Small Thumbnail for Processing, and Small Text for Error, show only Error, or Completed jobs as shown below.

The screenshot displays three panels from a job management interface:

- Held: 13**: A grid of 13 job thumbnails, each with an ID and name. The jobs are arranged in three rows. The first row contains jobs 20-23, the second row contains jobs 24-28, and the third row contains jobs 29-33.
- Processing: 1**: A table showing one job in progress. The table has columns for ID, Name, Attributes, Status, RIP Processing Remaining RIP Time, and Print Remaining Printing Time. The job is 'fx_ps_silver_peacock_A_mod.pdf' with status 'Printing' and a remaining printing time of 00:00:27.
- Error**: A table showing 16 error entries. The table has columns for ID, Name, Attributes, and Description. The errors are listed in a single column, with descriptions such as 'Resource Referring Error (CMYK Dev)' and 'Job Reception Error'.

Congratulations you have now completed this exercise.