



# How to Create Hot Folders

## GX Print Server for B9 Series Copier/Printer

Version 2.1



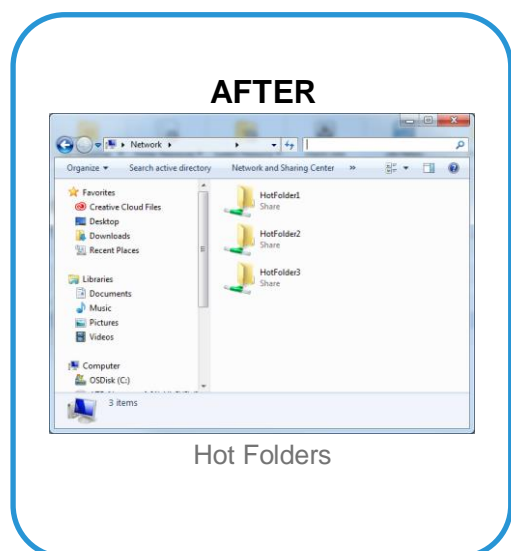
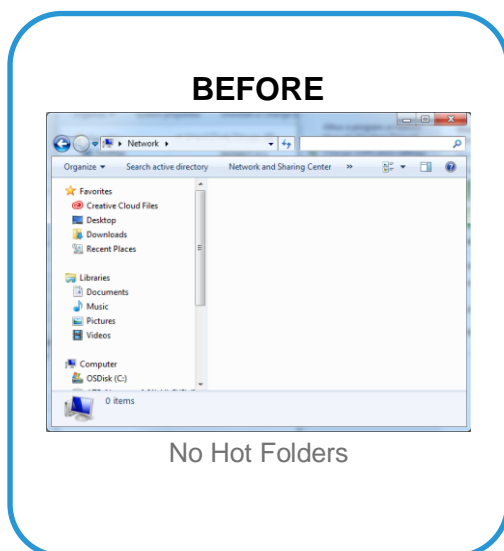
# Overview

This exercise will demonstrate the ability to submit print ready file types to the GX Print Server via a Hot Folder (Logical Printer). This feature allows users to drag and drop specific file types such as .jbf, .bbf, .zip, .ps, .pdf, .eps, .tif, .jpg to a folder that is shared out from the GX Print Server. Once these files are copied to the folder they are automatically processed according to the folders predefined job settings and actions. This method of file submission is powerful when multiple files need to be processed and managed in an automated workflow.

## Objective

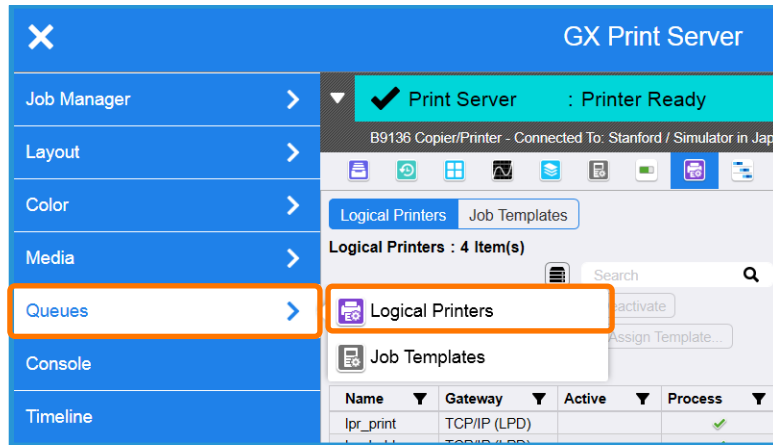
By the end of this exercise users will be able to:

- Navigate to the location of the setting on the GX Print Server
- Create a new “Logical Printer”
- Define a “Hot Folder” name
- Attach a pre-defined “Job template” to the Hot Folder
- Link the template and name to a new Hot Folder

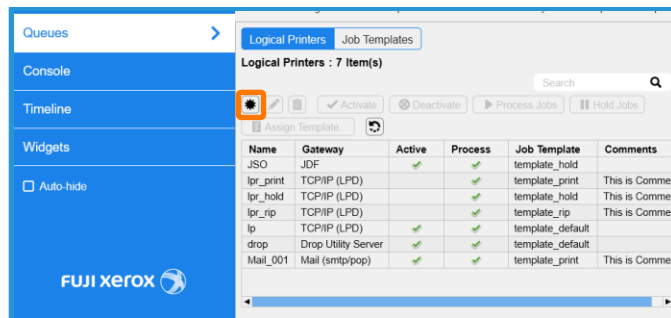


# Create a Hot Folder

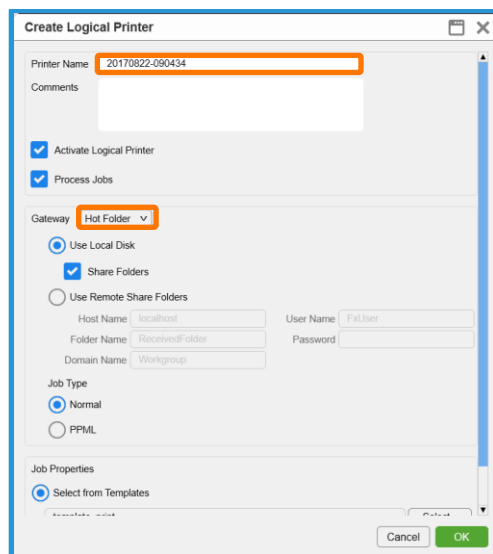
1. Log in as “Administrator”
2. Select **[Queues]** > **[Logical Printers]**



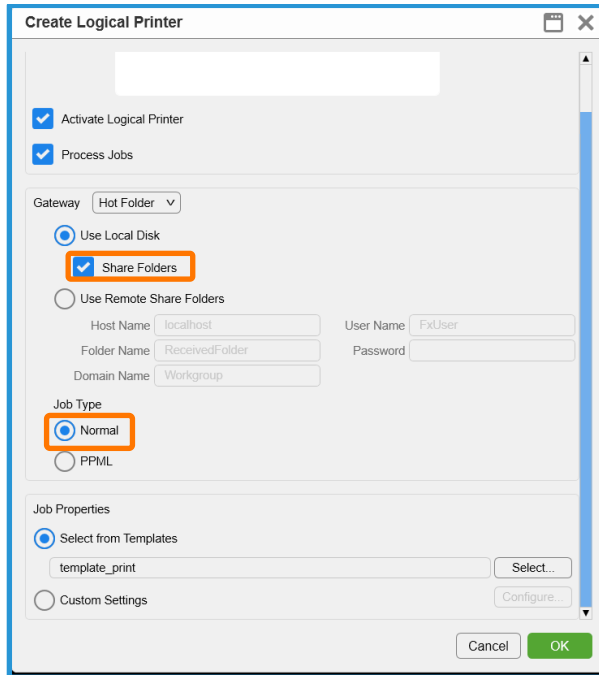
3. Click **[Create New]**.



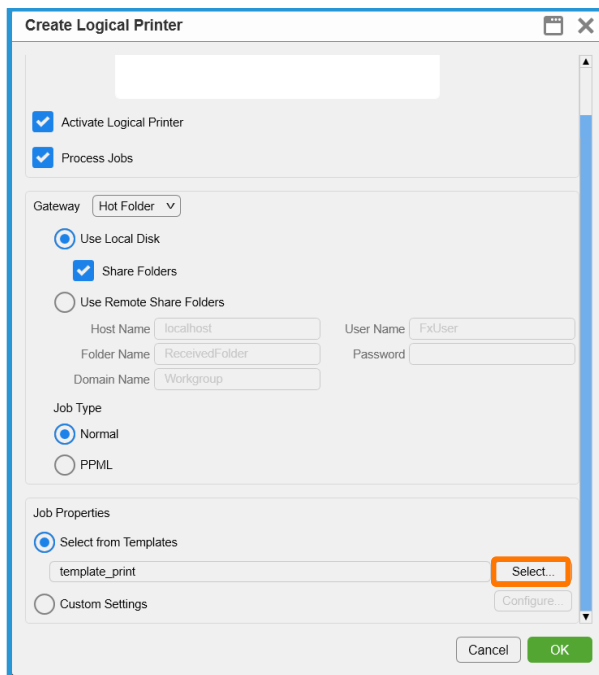
4. Enter the name for the required Hot Folder in **[Printer Name]** and select **[Hot Folder]** in **[Gateway]**.



5. Check **[Share Folders]** and Select **[Normal]** in **[Job Type]**.



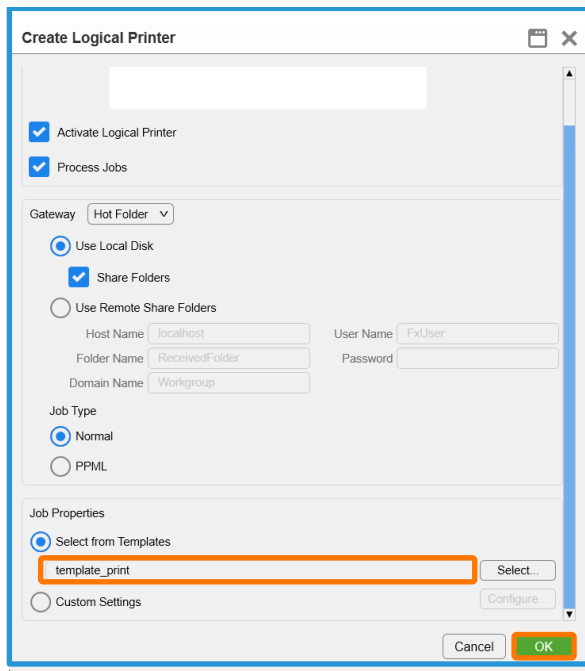
6. Check **[Select from Templates]** in [Job Properties] and click **[Select]** to select a predefined template.



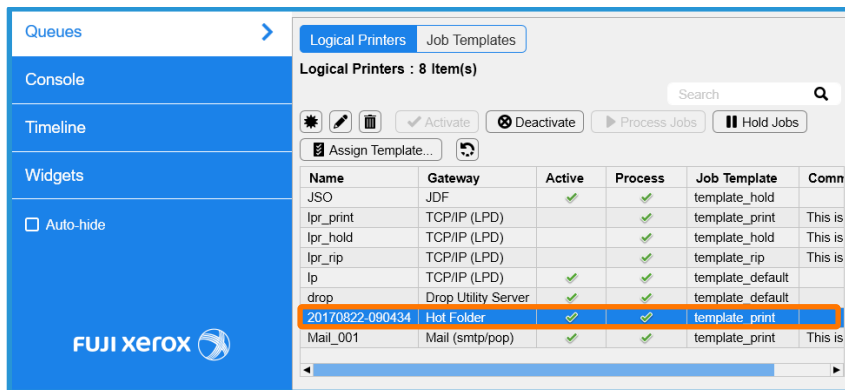
To learn how to create a Job Template, Please see “How to Create Job Template” doc.

Custom Settings can also be used to configure the Job Properties only for this logical printer.

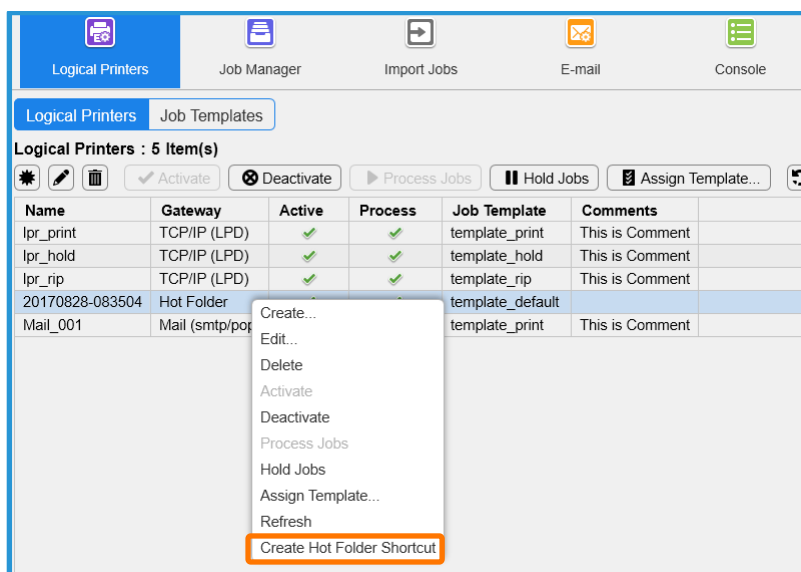
7. Select the Job Template and click **[OK]**.



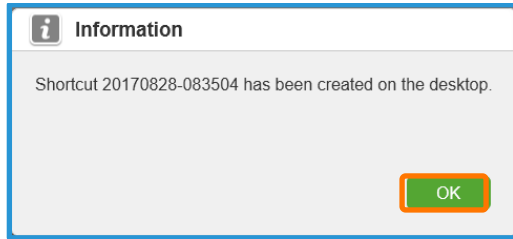
8. A new Hot Folder linked to the Job Template is created.



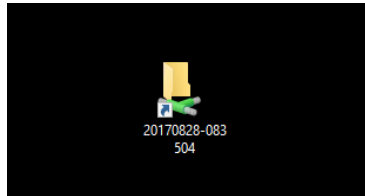
9. Select the Job Template and right click, select **[Create Hot Folder Shortcut]**.



10. click **[OK]**.



11. Short cut is created on the desktop.



You have now completed this exercise.

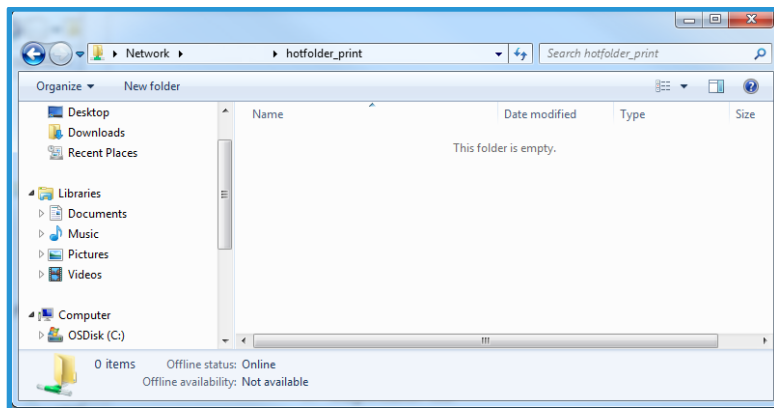
To test the Hot Folder, please continue to the next exercise.

# Submitting a Job to a Hot Folder



Hot Folders support the following file types:  
.jbf, .bbf, .zip, .ps, .pdf, .eps, .tif, .jpg

1. Connect to the hot folder on client PC and then drag and drop the file into the hot folder.



2. Select each file to be submitted and then click [OK].

Congratulations you have now completed this exercise.