



How to Install a Printer Driver on a Mac Computer

GX Print Server for
B9 Series Copier/Printer

Version 2.1

Overview

This exercise will demonstrate the process of downloading, installing and printing using a GX Print Server “PDF Printer Driver” on a Mac computer (for Mac OS 10.9 or later).

Objective

- Download the printer driver from Web Manager
- Install the printer driver
- Print from an application

BEFORE



AFTER



Download and Install Printer Driver (for Mac OS 10.9 or later)



This demonstration requires the IP Address of the GX Print Server. To learn how to find the IP address of the GX Print Server please refer to: The GX Print Server User Guide - Server Settings accessed by the “Help menu” on the Print Station – “Chapter 4 System Settings”

1. Access GX Print Server webpage by entering the IP address on the web browser address bar from the client computer.



For the Mac OS the PostScript printer driver is the default and only download option.

2. Select **[Download]** and then select the correct printer driver under **[Mac]**.

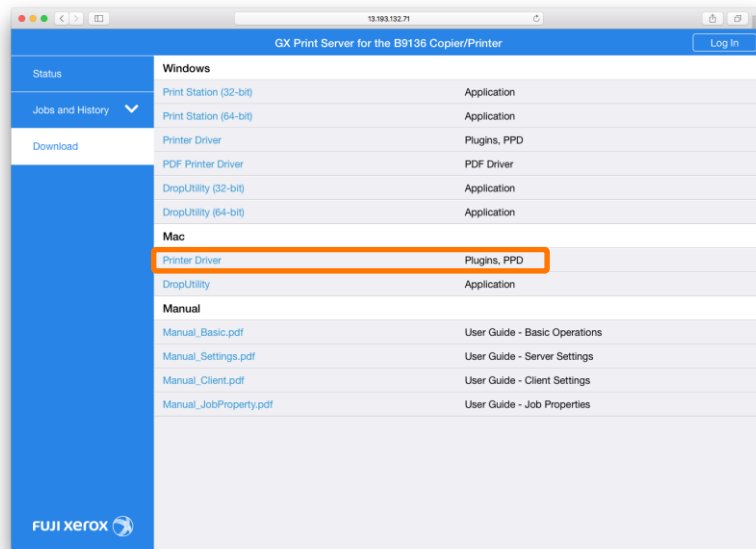
The screenshot shows the GX Print Server web interface for the Iridesse(TM) Production Press. The interface has a blue sidebar with a 'Download' button highlighted in orange. The main content area displays a table of available resources, with the 'Mac' section highlighted in orange. The table lists various printer drivers and utilities for both Windows and Mac OS.

Platform	Resource Name	Resource Type
Windows	Print Station (32-bit)	Application
	Print Station (64-bit)	Application
	Printer Driver	Plugins, PPD
	PDF Printer Driver	PDF Driver
	DropUtility (32-bit)	Application
	DropUtility (64-bit)	Application
	Swatch Library	Swatch Library
Mac	Printer Driver	Plugins, PPD
	DropUtility	Application
	Swatch Library	Swatch Library
	Manual	
Manual	Manua_Basic.pdf	User Guide - Basic Operations
	Manua_Settings.pdf	User Guide - Server Settings



Please note, in the next step we will use the example of connecting to a GX Print Server for a B9 Series Copier/Printer. If you are following this installation for another device your download (.dmg) name will be different.

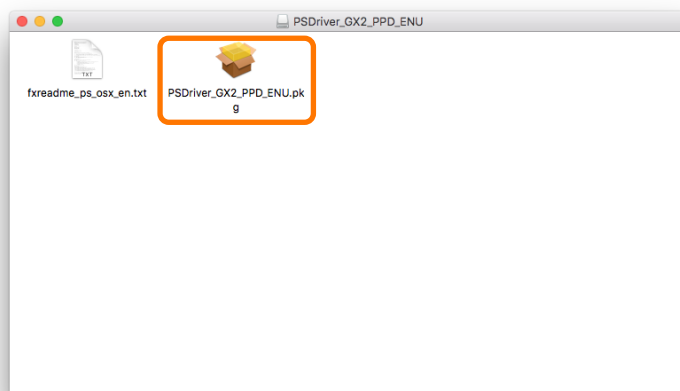
- Click the link **[Printer Driver]** and download the printer driver.



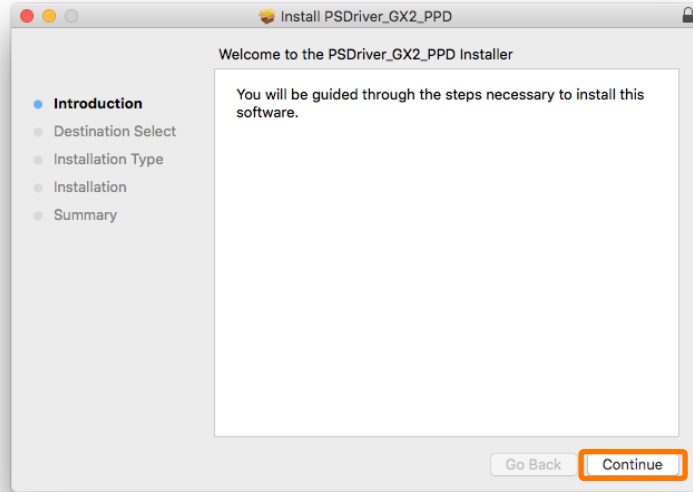
- Double-click the downloaded file.



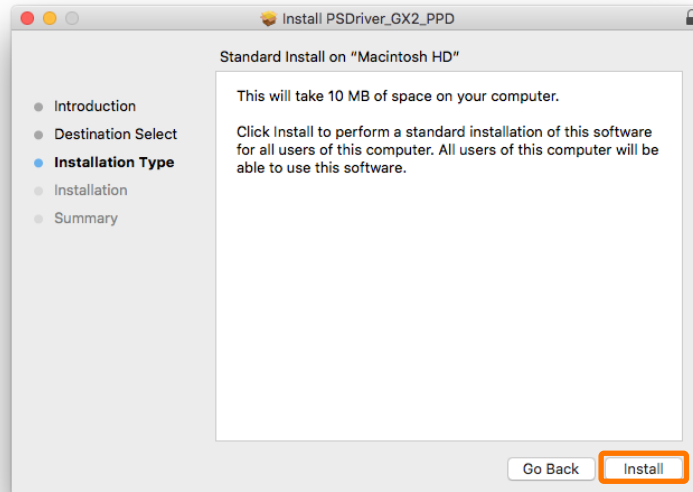
- Double-click "**PSDriver_GX2_PPD_ENU.pkg**" in the "PSDriver_GX2_PPD_ENU" folder.



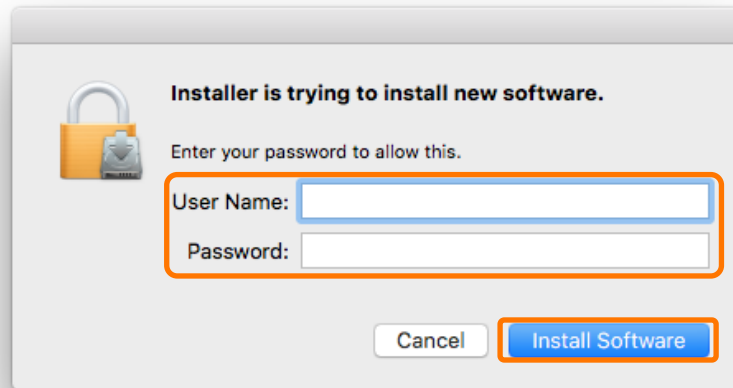
6. Click **[Continue]**.



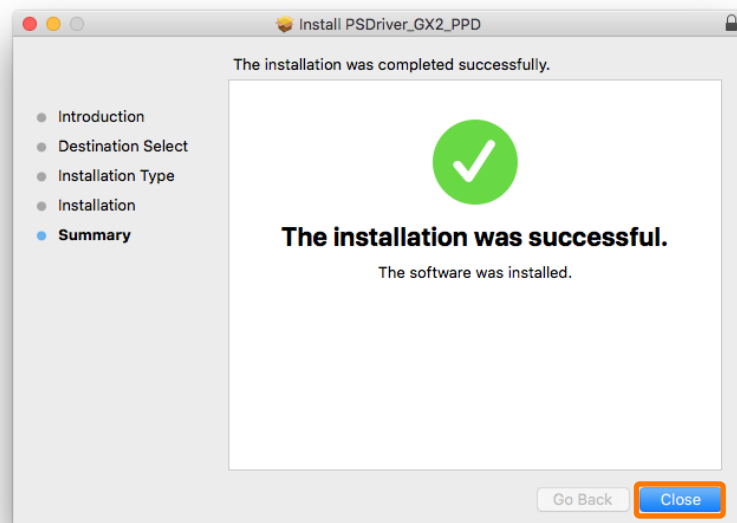
7. Click **[Install]**.



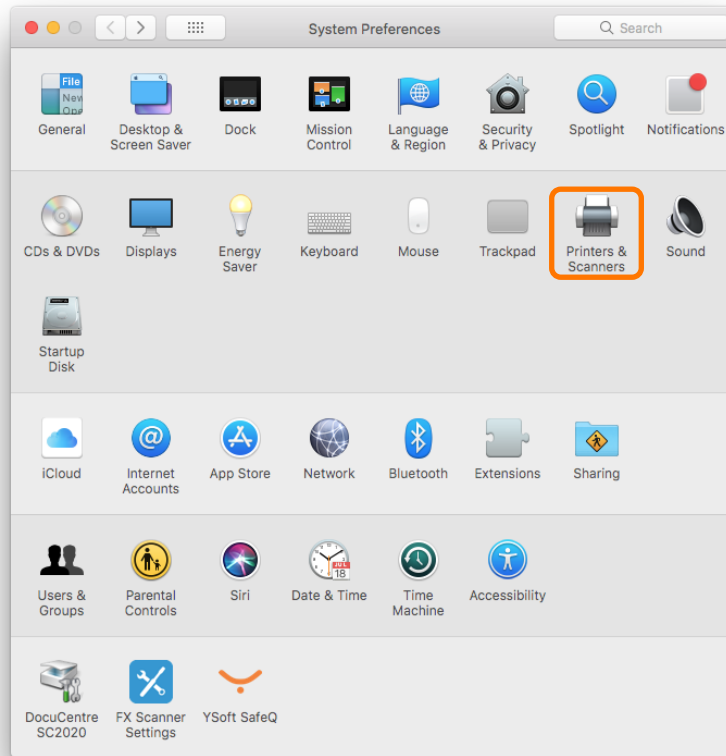
- Input the Mac OS Admin **Username** and **Password** to install new software and **click [Install Software]**.



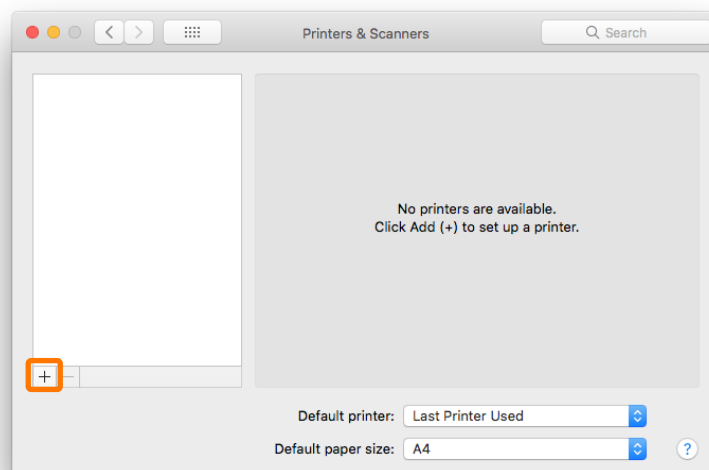
- When completed the following message appears, click **[Close]**.



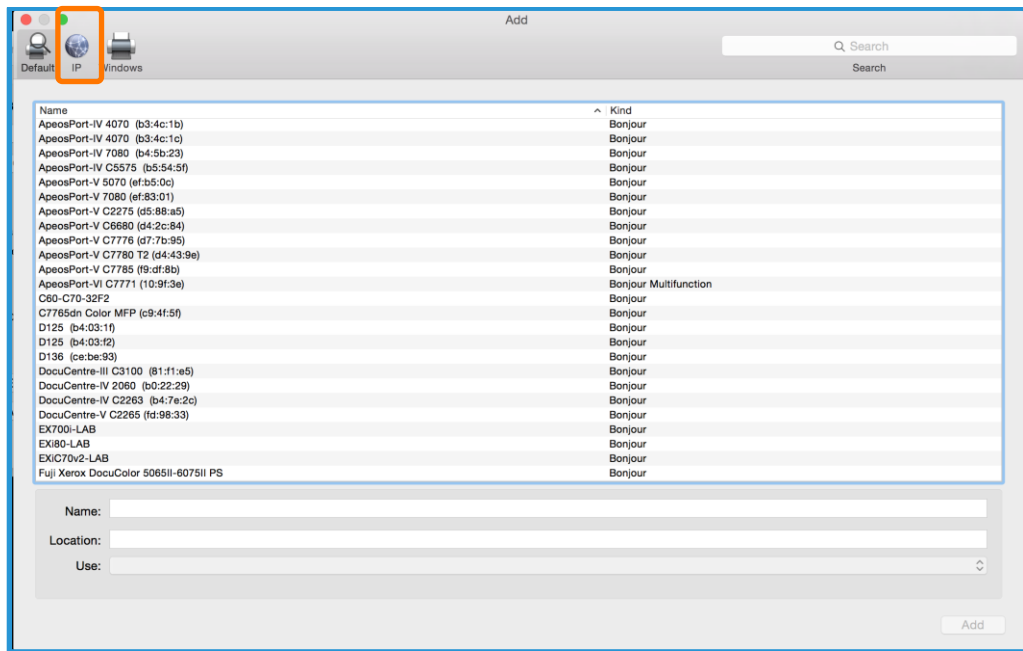
10. Open the Mac OS [System Preferences] window and click [Printers & Scanners].



11. Click [+] to add a printer



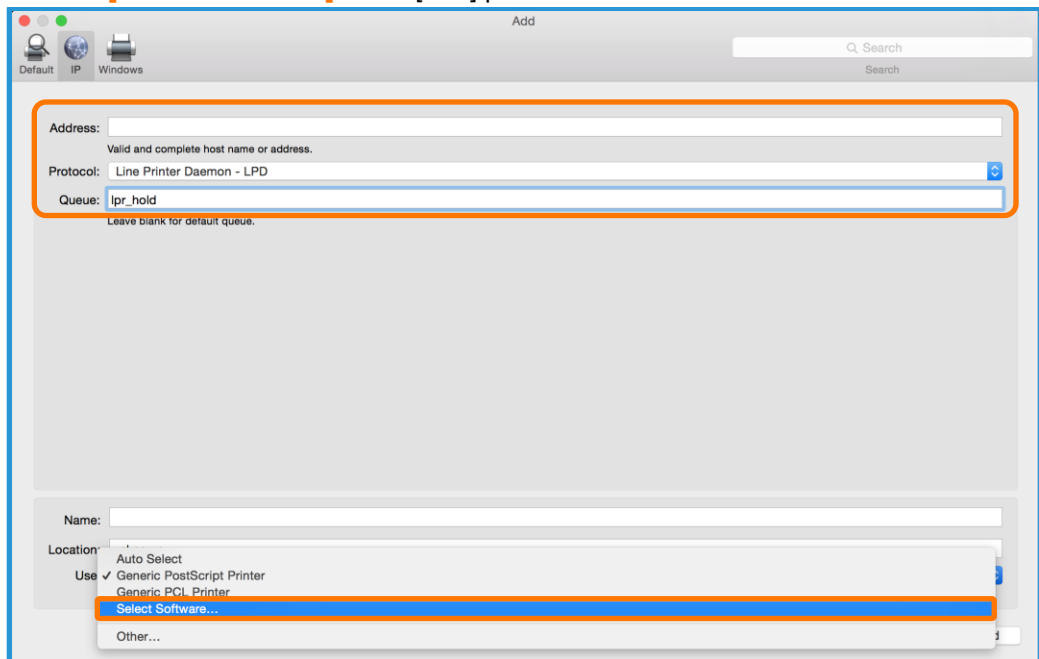
12. Click **[IP]** to create an LRP printer setup.



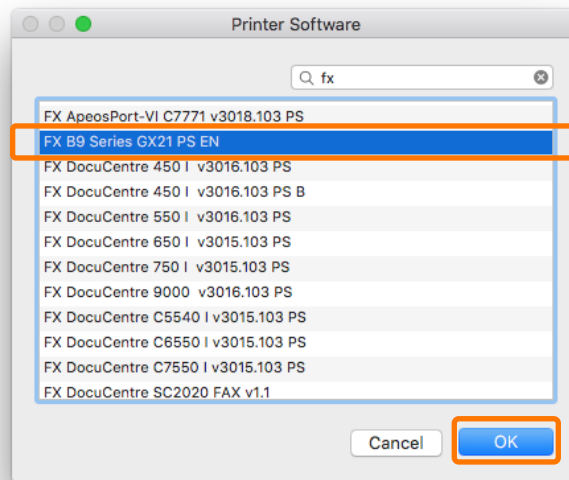
13. Check that **[Line Printer Daemon - LPD]** is selected in **[Protocol]**

- Enter the IP address of Print Server in **[Address]**.
- Enter the TCP/IP logical printer of Print Server in **[Queue]** (i.e "lpr_print" is a default system defined queue. A user defined queue may also be chosen at this step).
- Enter also the **[Name]** and **[Location]** if necessary.

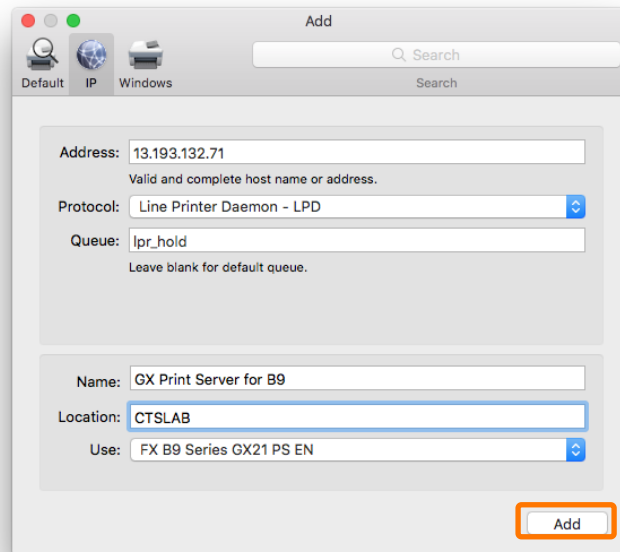
Choose **[Select Software]** in the **[Use]** pull-down menu.



14. Select **[FX B9 Series GX21 PS EN]** from [Printer Software] and then click **[OK]**.

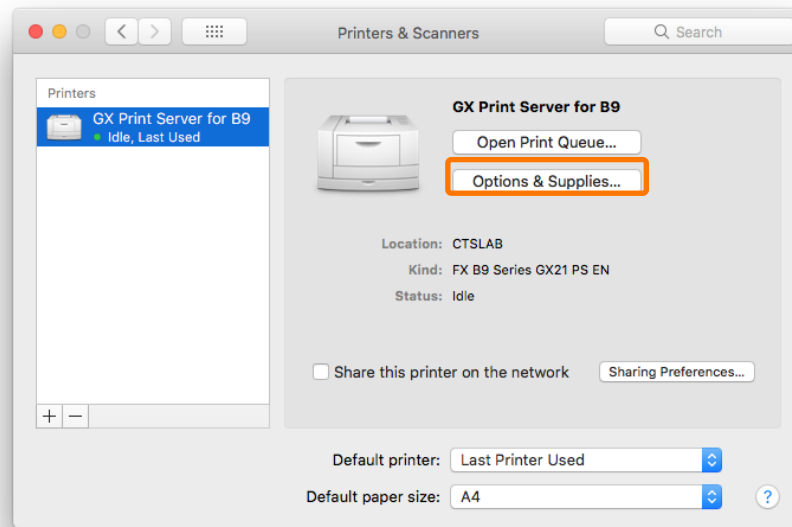


15. Then **click [ADD]** The printer is created.

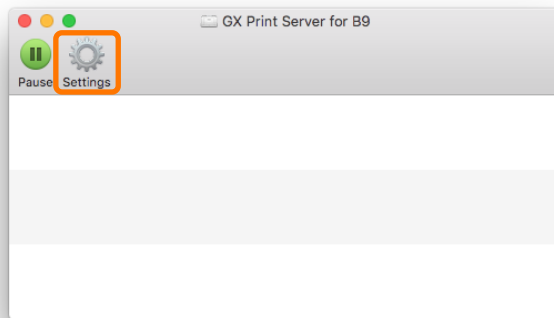


Congratulations, now the printer is added. The following steps explain how to get information such as Imposition Templates, Colour Profiles etc. from the GX Print Server.

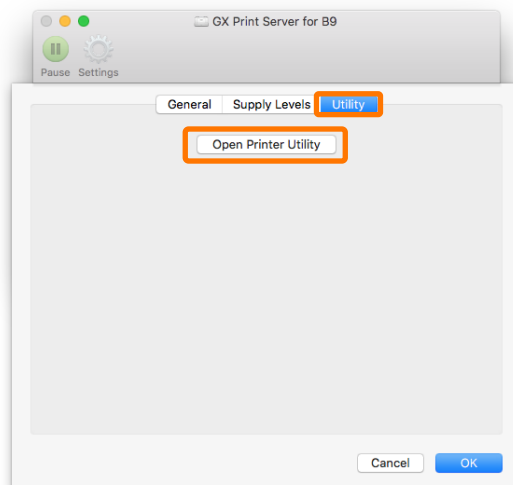
16. Click **[Open Print Queue]**.



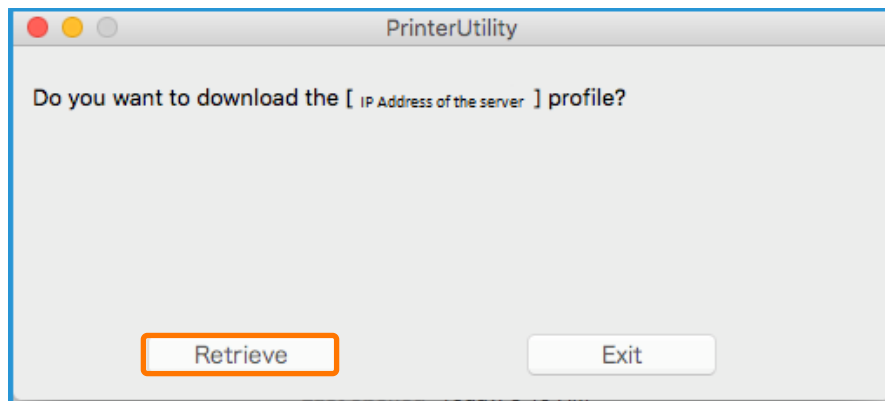
17. Click **[Settings]**



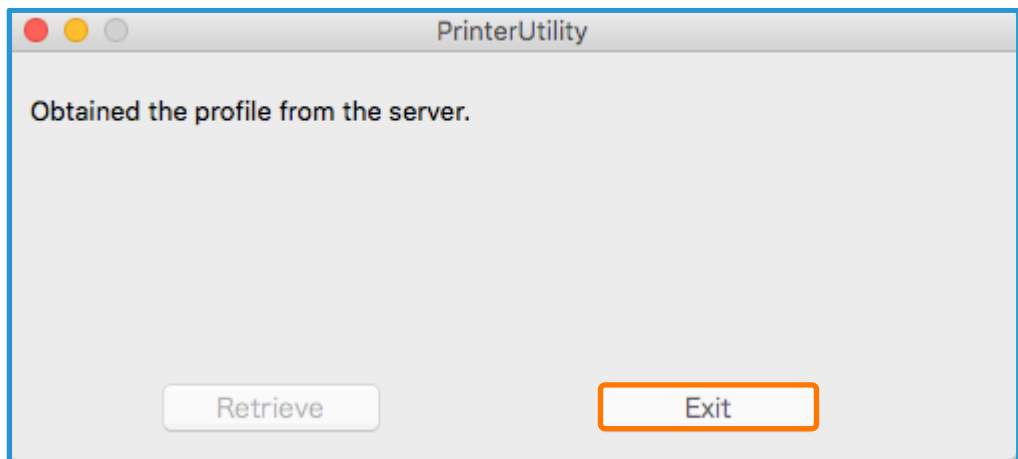
18. Select **[Utility]** and **[Open Printer Utility]**.



19. Click **[Retrieve]**.



20. Click **[Exit]**.

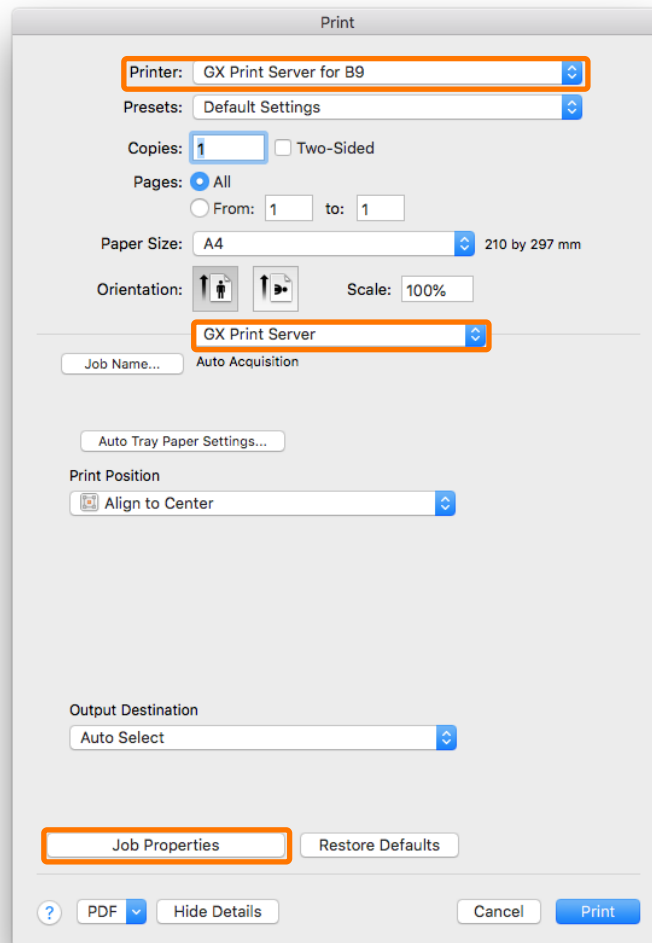


Congratulations, you have now completed the installation process of a GX Print Server Printer Driver.

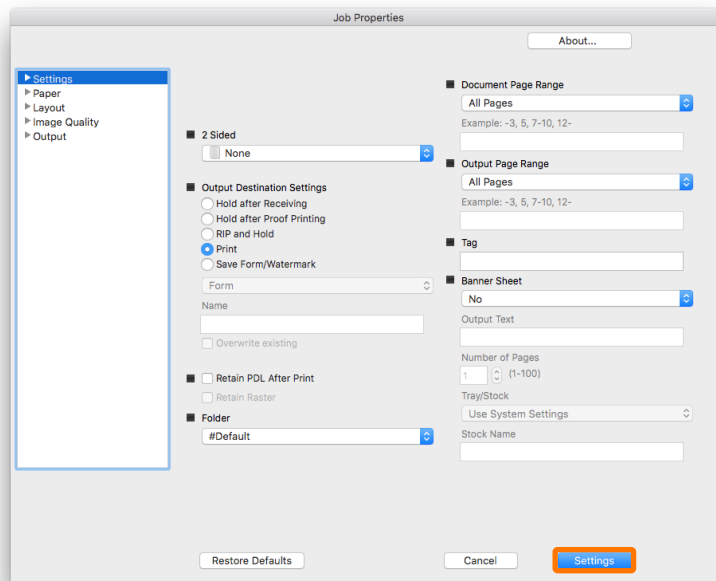
Please continue to the next steps in this exercise. We will test the success of the install, by choosing a file and an application to print from.

Print from the Macintosh Client

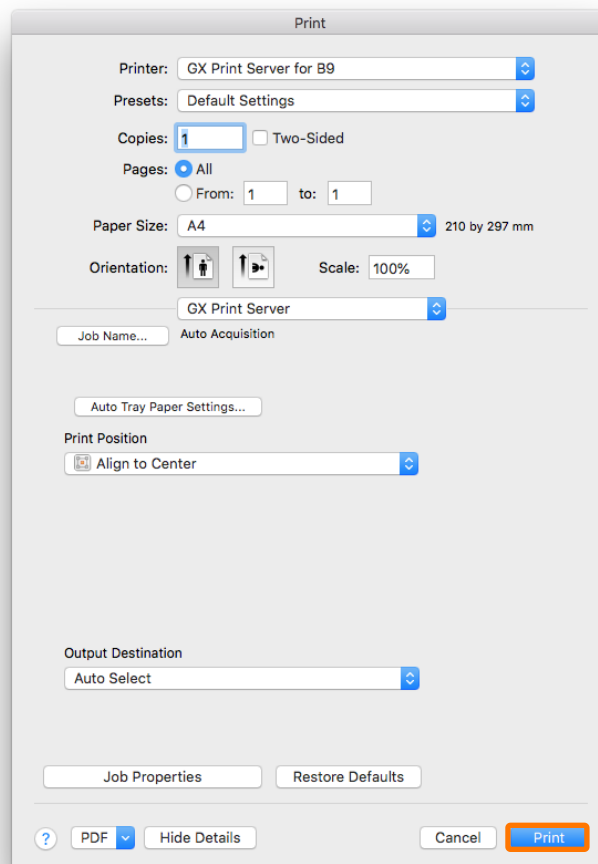
1. Select [File] >> **[Print]** from the application.
2. Select the printer driver created in the previous exercise from [Printer], and select **[GX Print Server]**.
If required, setup job properties, click **[Job Properties]**.



3. After setting the required job properties, click **[Settings]**.



4. Click **[Print]** in the [Print] dialog box.



Congratulations you have now completed this exercise.