



How to Install a Printer Driver on Windows

GX Print Server for B9 Series Copier/Printer

Version 2.1

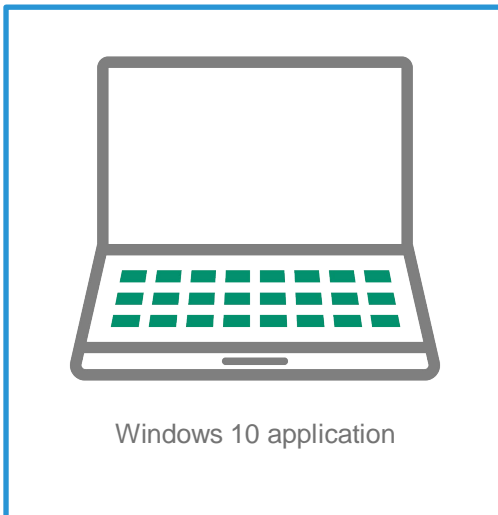
Overview

This exercise will demonstrate the process of downloading, installing and printing using a GX Print Server “PDF Printer Driver” on a Microsoft Windows 10 PC.

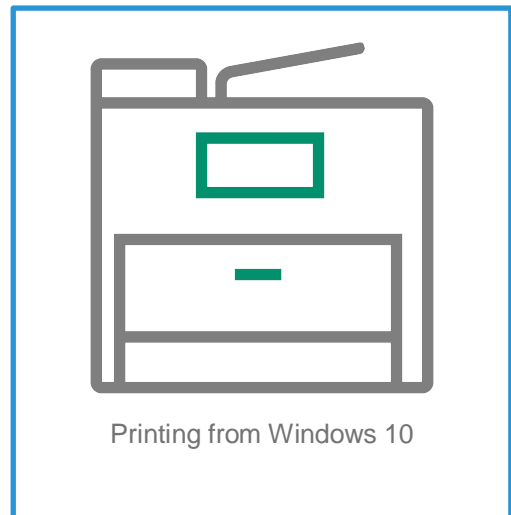
Objective

- Download the PDF Printer Driver from Web Manager
- Install the printer driver on Windows 10
- Print from an application

BEFORE



AFTER

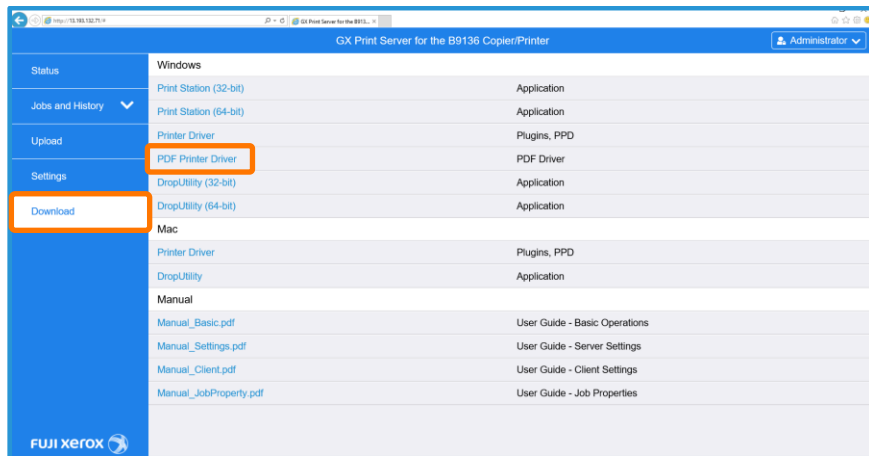


Download and Install Printer Driver



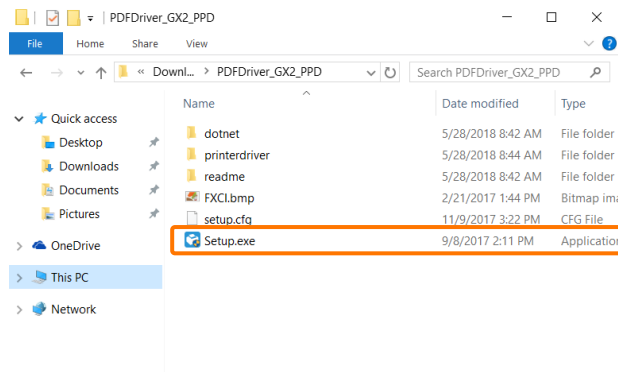
This demonstration requires the IP Address of the GX Print Server. To learn how to find the IP address of the GX Print Server please refer to: The GX Print Server User Guide- Server Settings accessed by the “Help menu” on the Print Station – “Chapter 4 System Settings”.

1. Access the GX Print Server webpage by entering the IP address on the web browser address bar from the client computer.
2. Select **[Download]** and **[Windows]**.
3. Click the link **[PDF Printer Driver]** to download the printer driver to the local Windows PC.



For the PostScript printer driver, please click the link **[Printer Driver]**.

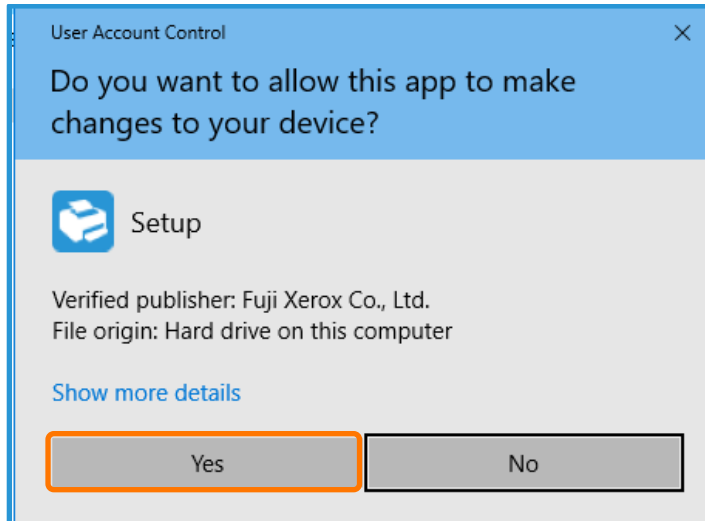
4. Double-click the downloaded file, (PDFDriver_GX2_PPD.exe) and unzip the file to a location of your choice.
5. Double-click the **[Setup.exe]** file.



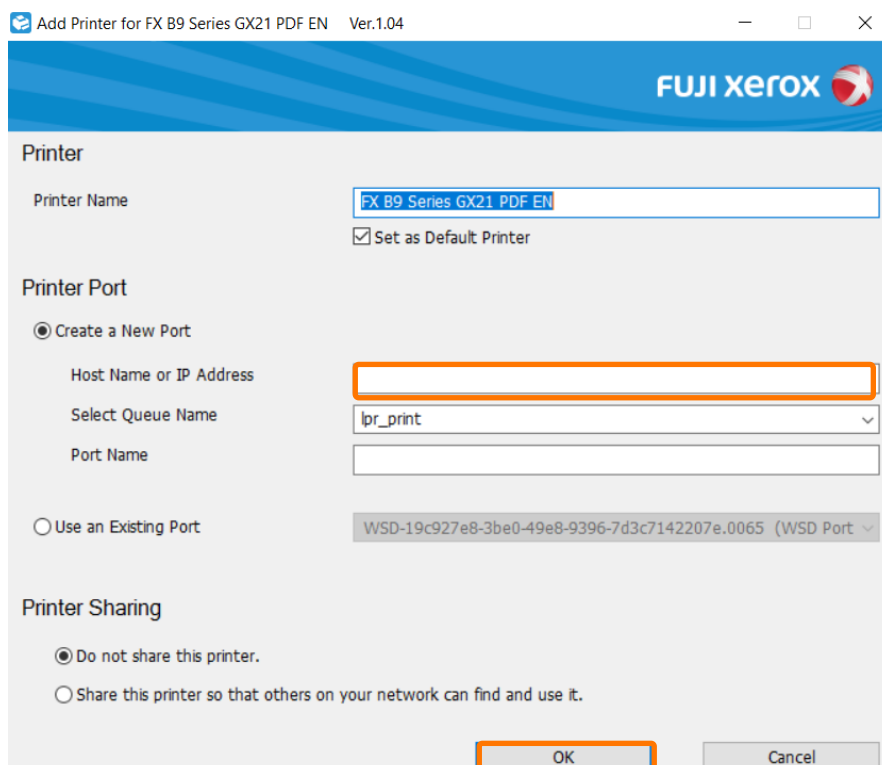


Please note: Either the “Microsoft .NET Framework 4 Client Profile”, or the “Microsoft .NET Framework 4” is needed to install the Printer Driver. If they are not installed, the “.NET Framework” will be automatically installed.

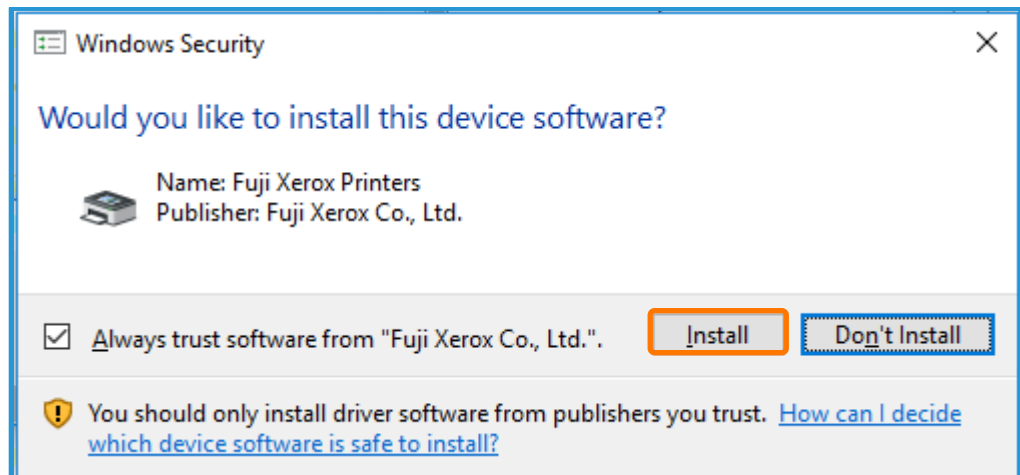
6. Select **[Yes]**.



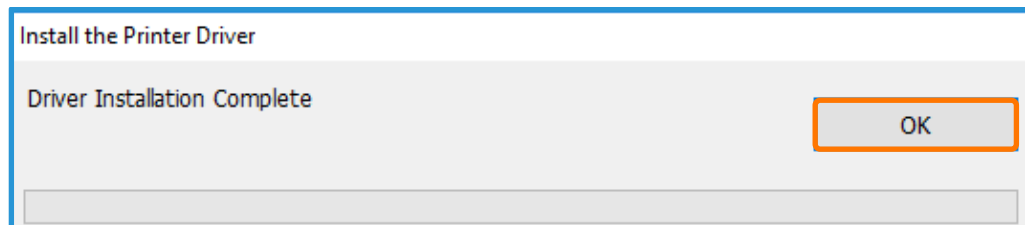
7. Configure the following settings:
 - a. Enter the IP address of Print Server in **[Hostname or IP address]**.
 - b. You may enter the port name in [Port name] or leave it as the default IP.
8. Click **[OK]** to apply the changes.



9. When the following dialog box appears, click **[Install]**.



10. Click **[OK]**.



Congratulations, you have now completed the installation process of a GX Print Server Printer Driver.

Please continue to the next steps in this exercise. We will test the success of the install, by choosing a file and an application to print from.

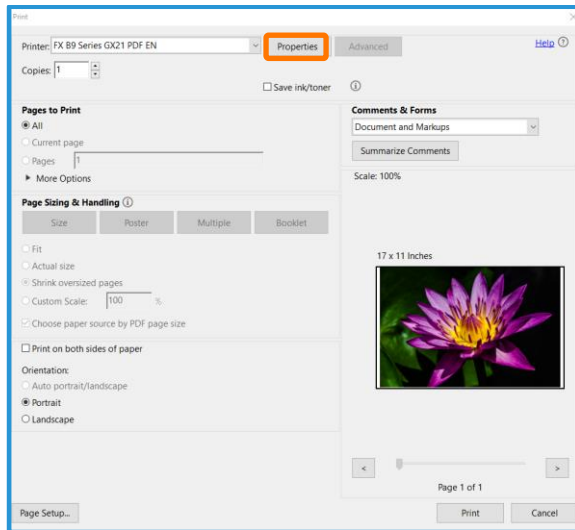
Print from the Windows Client

1. Select [File] >> **[Print]** from the application.

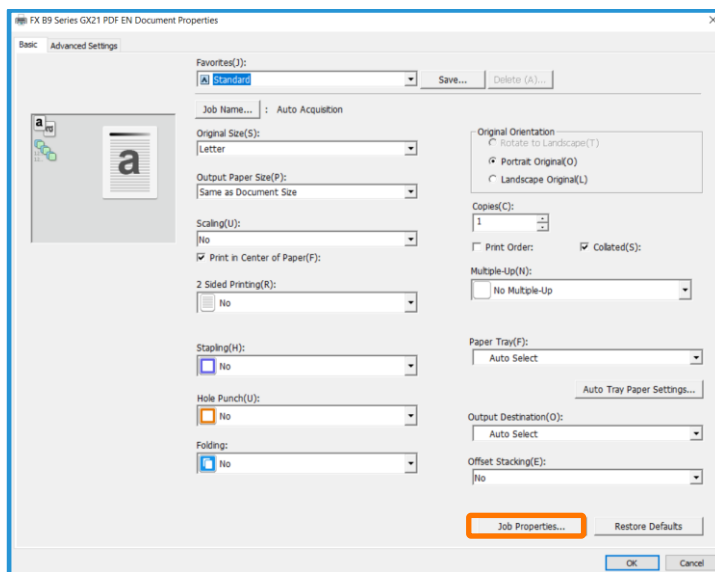


Please note, in the next step we will use the example of printing to a GX Print Server for a B9 Series Copier/Printer. If you are following this installation for another device the printer that you installed in the previous steps will be different.

2. Select the **FX B9 Series GX21 PDF EN** from **[Printer]**, and click **[Properties]**.



3. If required, set up job properties, click **[Job Properties]**.



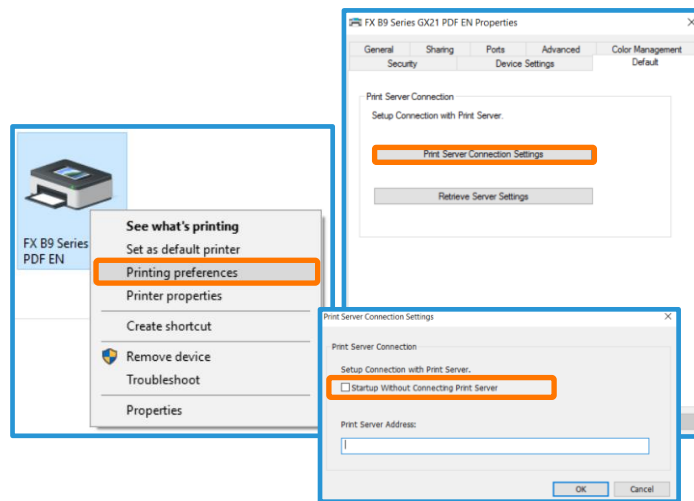
4. Make the necessary selections and click **[OK]**.
5. Click **[Print]** in the [Print] dialog box.

The jobs are sent to GX Print Server.



Please note: When the job properties dialog is displayed, the Printer Driver retrieves information from the GX Print Server (i.e. information such as Imposition templates, color profiles etc.). This process can sometimes take a while.

This connection can be disabled in [Printer properties] >> [default] >>[Print Server Connection Settings]



Congratulations you have now completed this exercise.