



How to Print Using the PDF Printer Driver

GX Print Server for B9 Series Copier/Printer

Version 2.1

Overview

This exercise will demonstrate the benefit of printing from a Windows PC only client computer using the GX Print Server PDF Printer Driver. An Adobe Postscript Driver is also provided for the GX Print Server as another option for common printing applications (for both Mac and Windows PC). However the GX Print Server also provides The PDF Printer Driver (Only supported on Windows PC), which enables users to produce an improved printed output for certain Microsoft Office applications. The PDF Printer Driver also supports “pass-through mode” for some applications, which enables users to send the pdf file to the GX Print Server whilst using a familiar printer driver interface. This demonstration will allow the user to compare the two printer driver options.

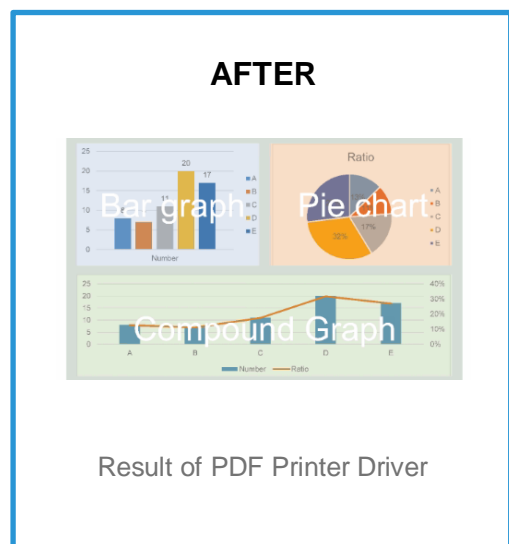
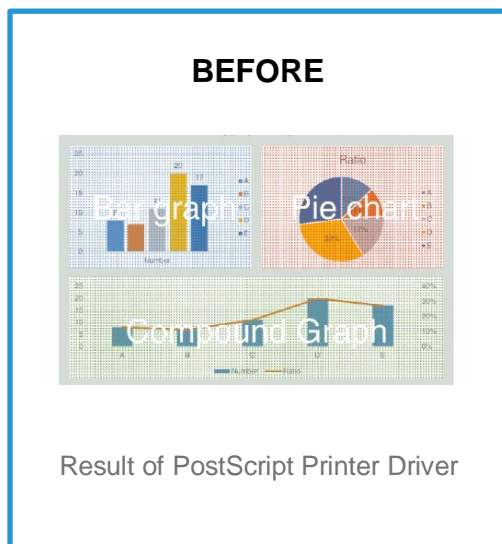
Supported applications for “pass-through mode”:

- Adobe Acrobat DC or later version
- Adobe Reader DC or later version
- Adobe InDesign CC 2014 or later version

Objective

By the end of this exercise you will be able to:

- Print from an application using both the PostScript Printer Driver and PDF Printer Driver
- Discover the benefits of using The GX Print Server PDF Printer Driver
- Learn how “pass-through mode” works

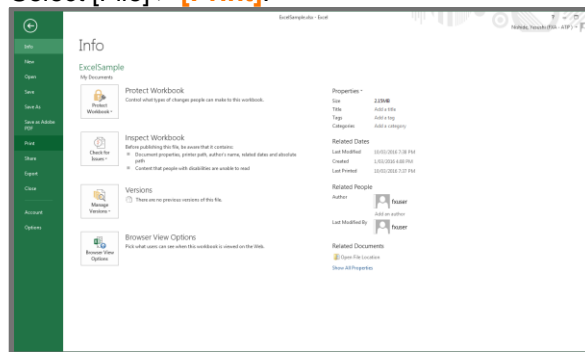


Printing from Microsoft Excel



For comparison, please install both the PS Printer Driver and PDF Printer Driver by referencing: [HTD_how-to-install_printer_driver-gxprintserver](#).

1. Open an Excel document by double clicking your job (or the supplied sample Excel file).
2. Select [File] > **[Print]**.



3. Select the **PDF Printer Driver** for GX Print Server in the **[Printer]** drop down menu.

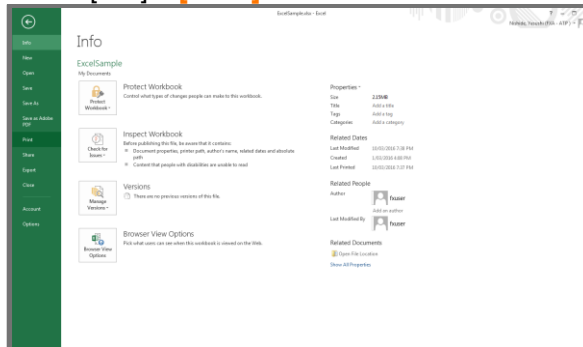


4. Click **[Print]**.

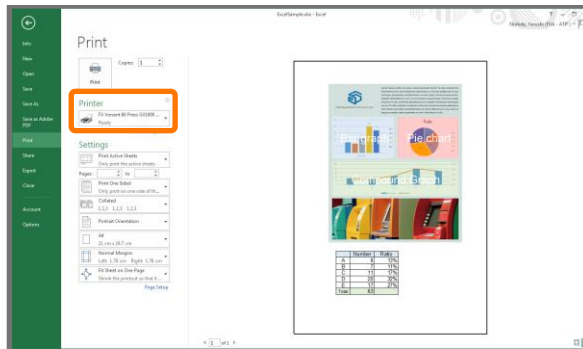


You have printed a document from Excel and will now print the same document with using a PS Driver to compare the results.

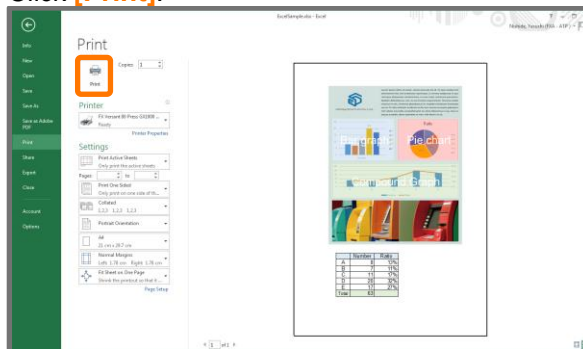
5. Select [File] > [Print].



6. Select the **PS** Printer Driver for GX Print Server in the [Printer] drop down menu.



7. Click [Print].



8. Compare the printed output from PS Printer Driver and PDF Printer Driver.

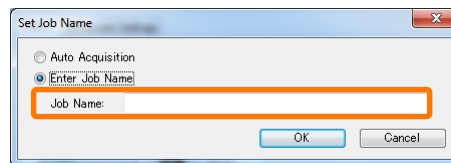
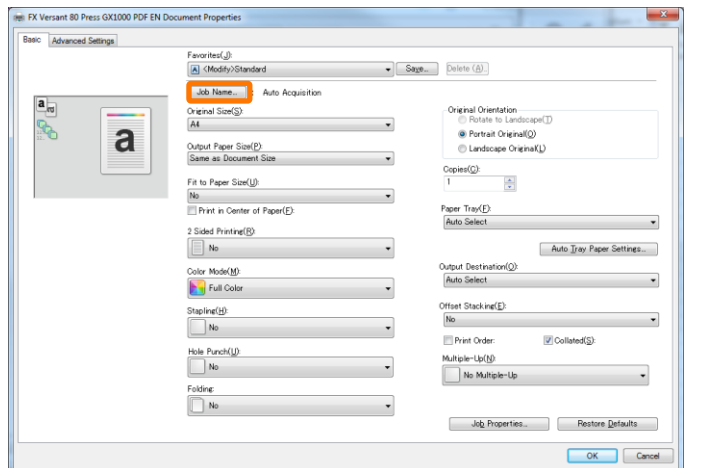
You have now completed this exercise.

To practice the process of printing using “pass-through mode”, please continue to the next exercise.

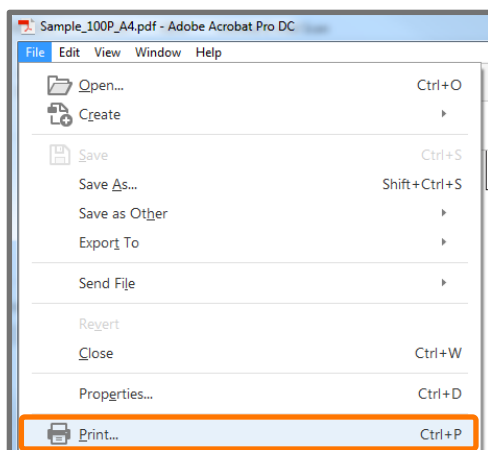
Printing from Acrobat DC (pass-through mode)



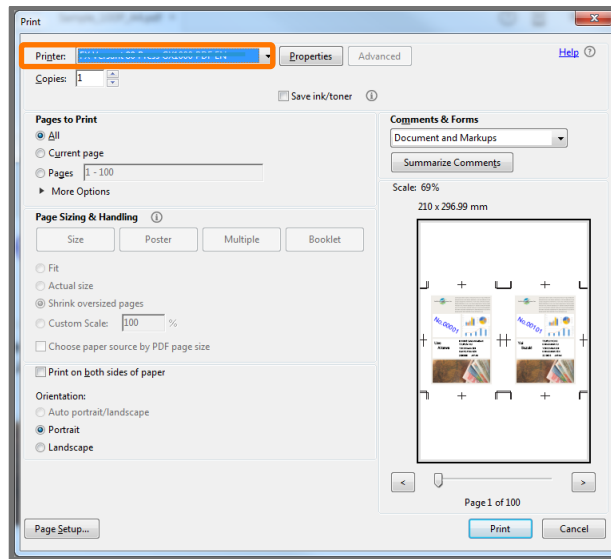
When “pass-through mode” is used, the job name becomes “Unknown_xxxxxxx”. In order to set the job name, please click [Job Name] in the Properties dialog box.



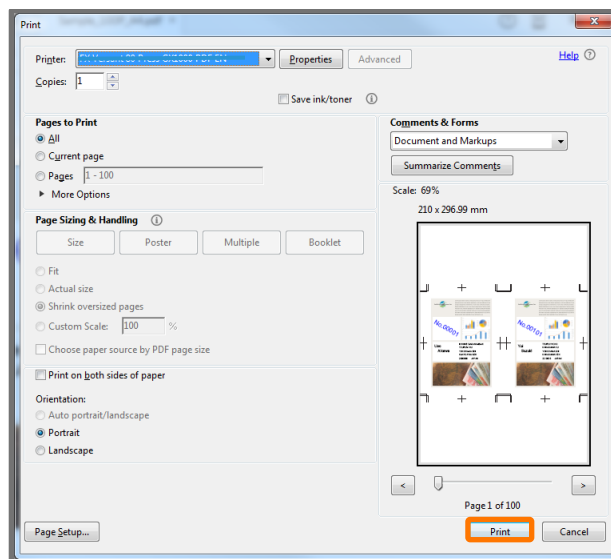
1. Open the sample PDF job by double clicking the file.
2. Select [File] > **[Print]**.



3. Select the **PDF Printer Driver for GX Print Server** in the **[Printer]** drop down menu.

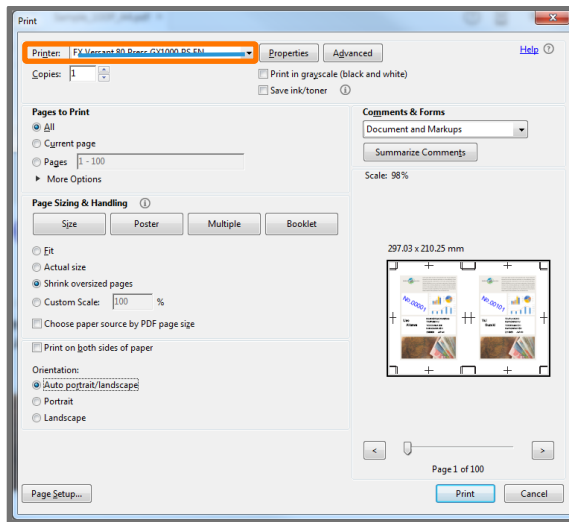


4. Click **[Print]**.

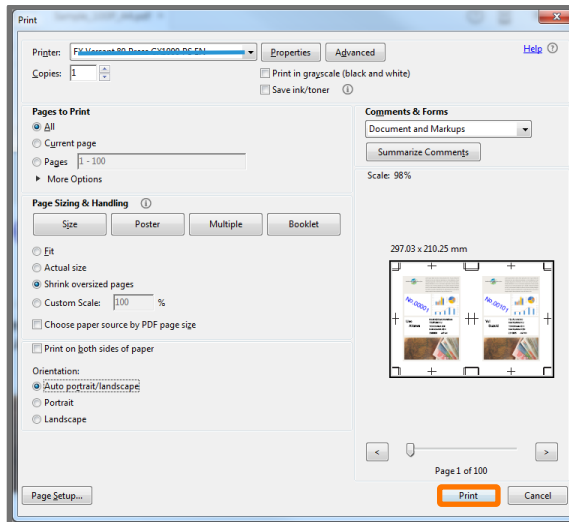


You have printed a document from Acrobat DC using “pass-through mode” and will now print the same document using a PS Driver (without pass through mode), to compare the results.

1. Select the **PS Printer Driver for GX Print Server** the **[Printer]** drop down menu.



2. Click **[Print]**.



Please note: This demonstration shows that it may take more time to send the data to the GX Print Server using the PS Driver.

The improvements made by converting some applications directly to PDF data and using “pass-through mode” can greatly reduce processing times due to potentially smaller file sizes.

Congratulations you have now completed this exercise.