



# How to Print with a Two-sided Trim

GX Print Server for  
B9 Series Copier/Printer

Version 2.1



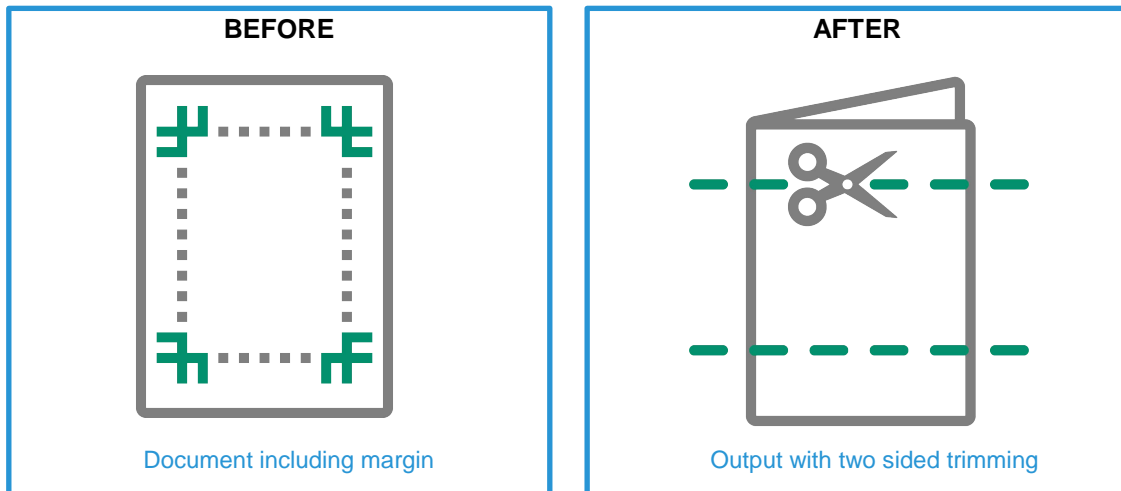
# Overview

This exercise will demonstrate the ability to print a job with a two-sided trim using the GX Print Server. The user has the ability to configure two-sided trim finishing by specifying a finished size. This exercise will also demonstrate the way to configure a job with bleed.

## Objective

By the end of this exercise users will be able to:

- Find the location of the setting on the GX Print Server
- Configure a two-sided trim job with a finished size
- Configure a two-sided trim job with bleed



A physical Crease can be applied when the optional Crease/Two-sided Trimmer is installed on the printer.

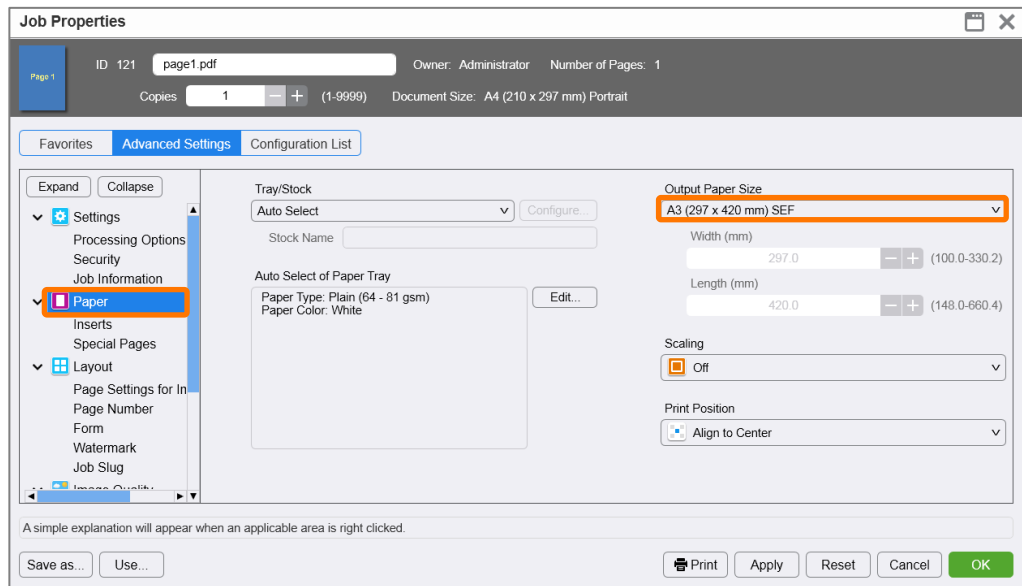
# Configure two-sided trims with finished size



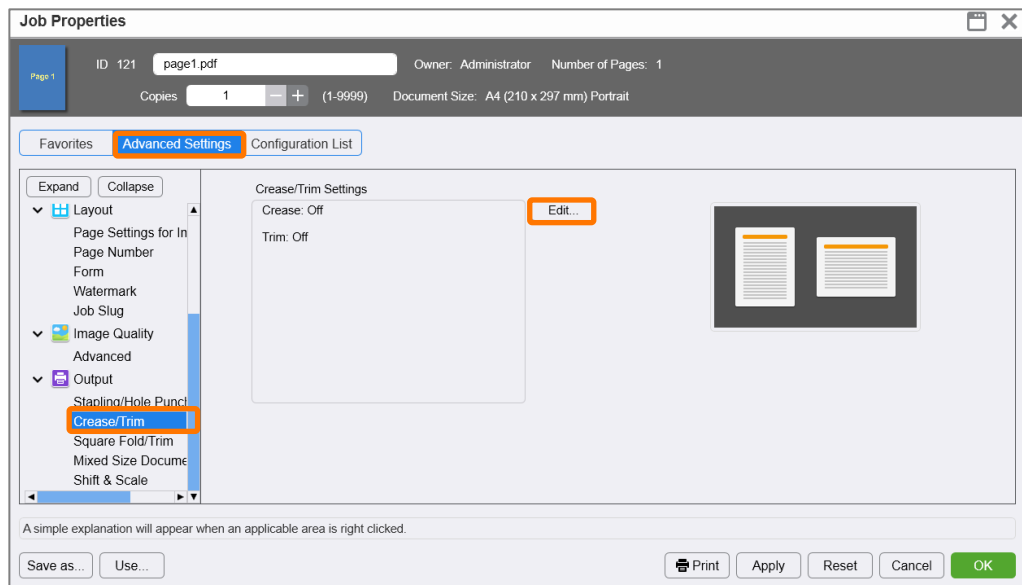
Please note, this How To document is part of a set. If you cannot complete some of the following steps please refer to the other reference documents. i.e “Open the Job Properties” is further explained in the “How to import a job.pdf”. Go to:

[https://m1support-fb.fujifilm.com/driver\\_downloads/OTS/OTS\\_GX\\_Print\\_Server\\_B9\\_Series\\_EN.html](https://m1support-fb.fujifilm.com/driver_downloads/OTS/OTS_GX_Print_Server_B9_Series_EN.html)

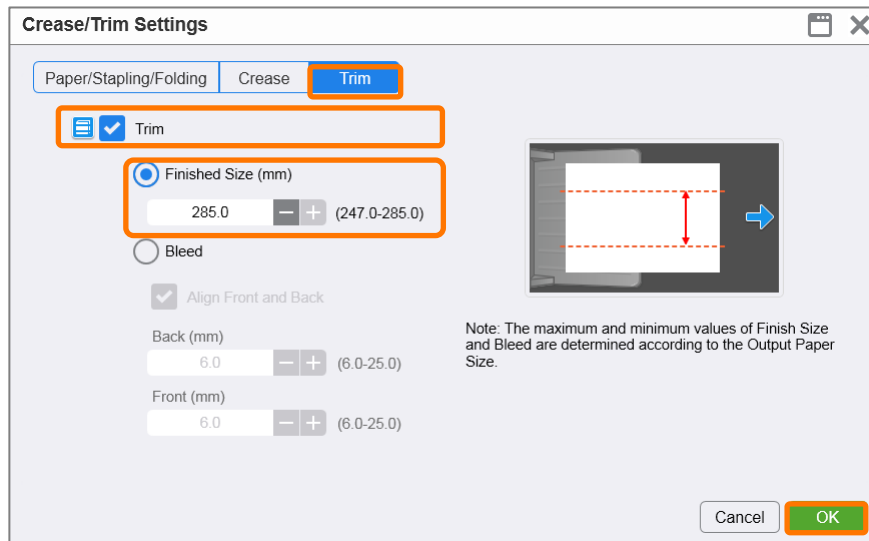
1. Open the Job Properties and select [Advanced Settings] > [Paper]. Then select a specific paper size such as [A3(297x420mm) SEF] (anything other than [Same as Document Size]) within [Output Paper Size].



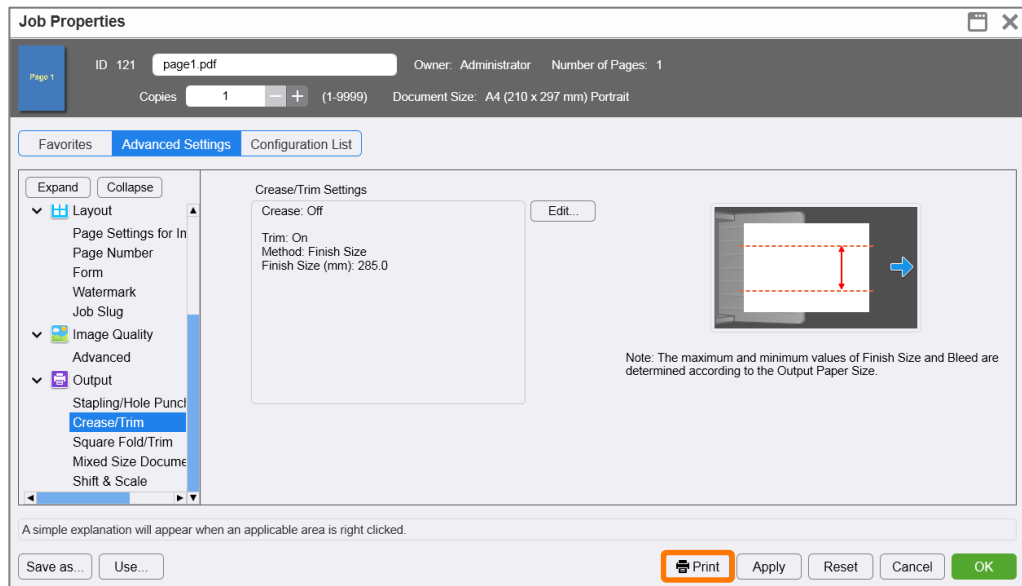
2. Select [Advanced Settings] > [Output] > [Crease/Trim]. Then click [Edit].



3. Select the **[Trim]** tab, and enable the **[Trim]** checkbox. Select **[Finished Size (mm)]** and specify your desired finished size for trimming. Then, click **[OK]**.



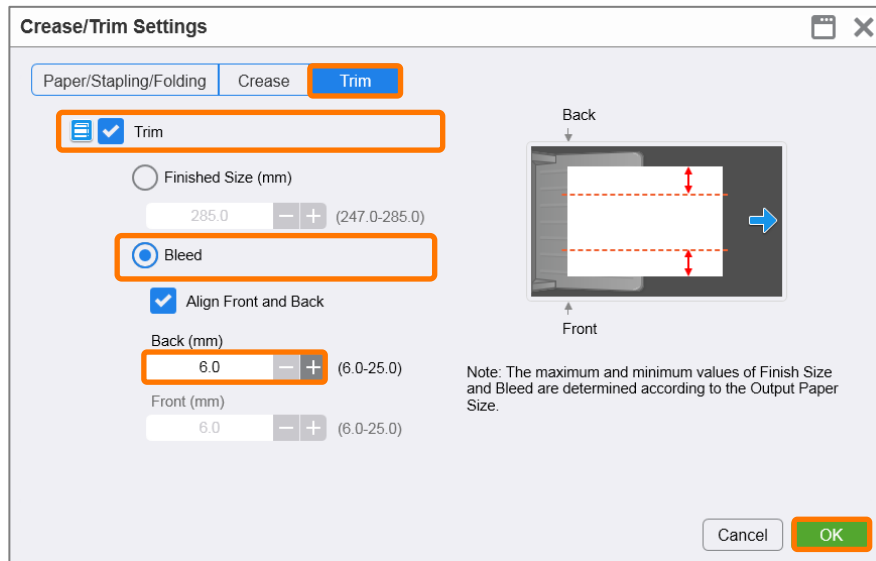
4. Click **[Print]** to print the job.



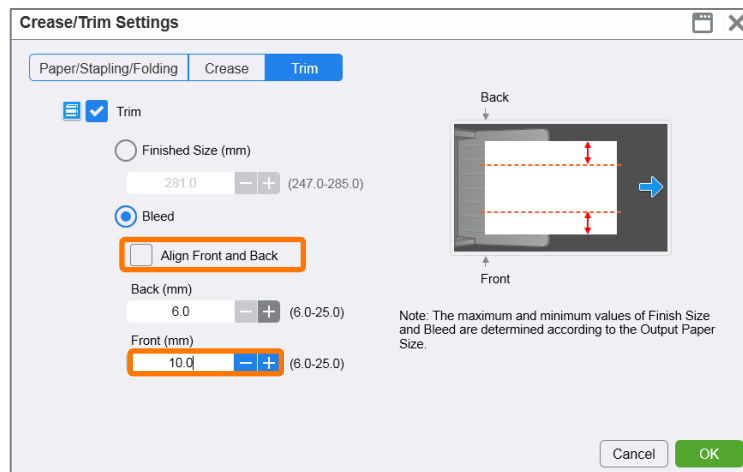
Congratulations you have now completed the exercise for setting a two-sided trim using the finished size option on the GX Print Server. Please continue to the next task of configuring the bleed width.

# Configure a two-sided trim job with bleed

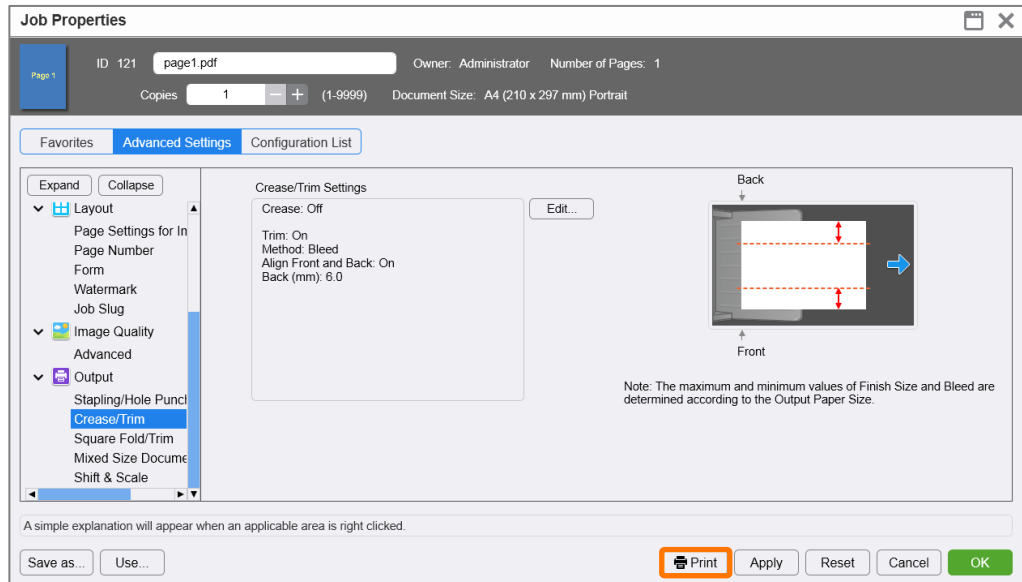
1. Open Crease/Trim Settings window, and select the **[Trim]** tab. Enable the **[Trim]** checkbox, then select **[Bleed]** and specify a bleed size for trimming. Then, click **[OK]**.



You can also configure a different width for the back and front by unchecking **[Align Front and Back]**, if the specific job requires it.



2. Click **[Print]** to print the job.



Congratulations you have now completed this exercise.