

How to Use the Sharpness Feature

GP Controller for ApeosPro
C810/C750/C650

Version 1.0

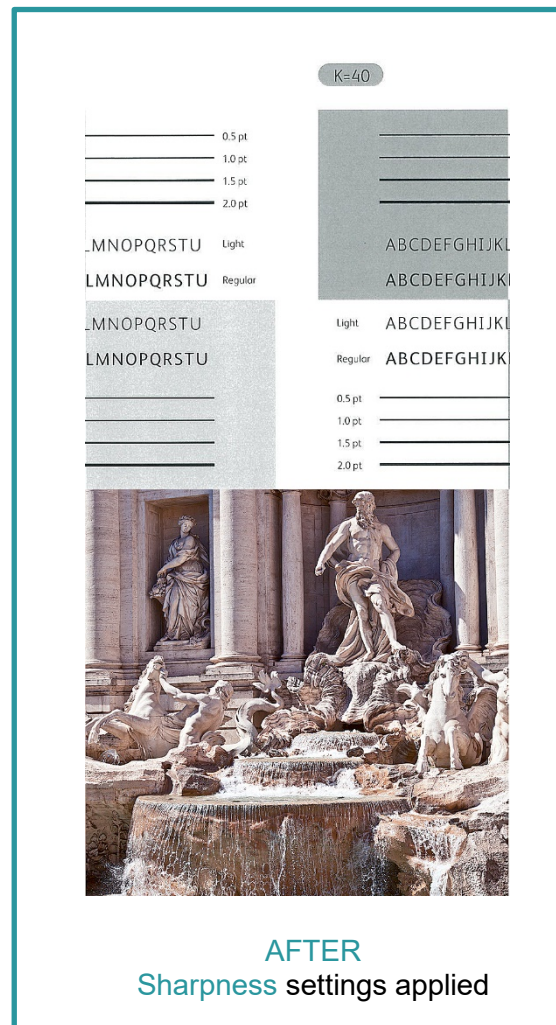
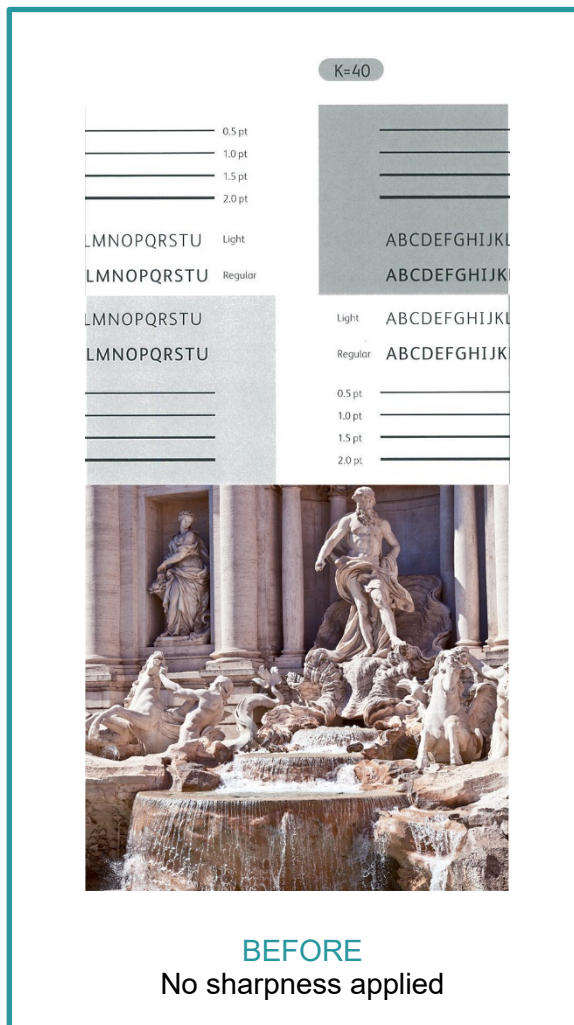
Overview

This exercise will demonstrate the ability to make changes to the **Sharpness** setting on **GP Controller**. This feature can be used to improve the image quality of both **Photos** (Bitmap elements) as well as **Text & Line work** (Vector elements). The printed effect is like the results achieved when sharpening is applied in **pre-press**, using desktop publishing software.

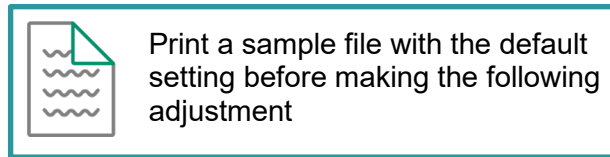
Objective

By the end of this exercise users will be able to:

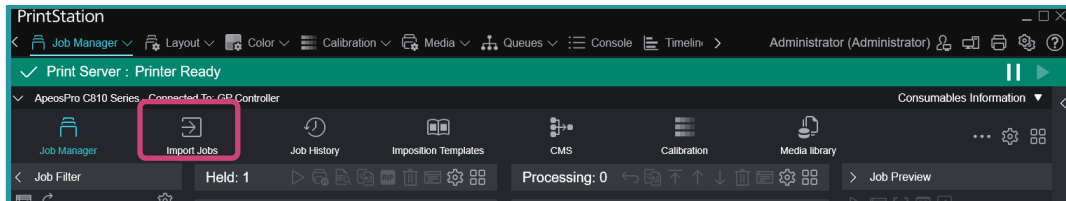
- Navigate the feature on the GP Controller
- Make an adjustment to the default value
- Compare the results



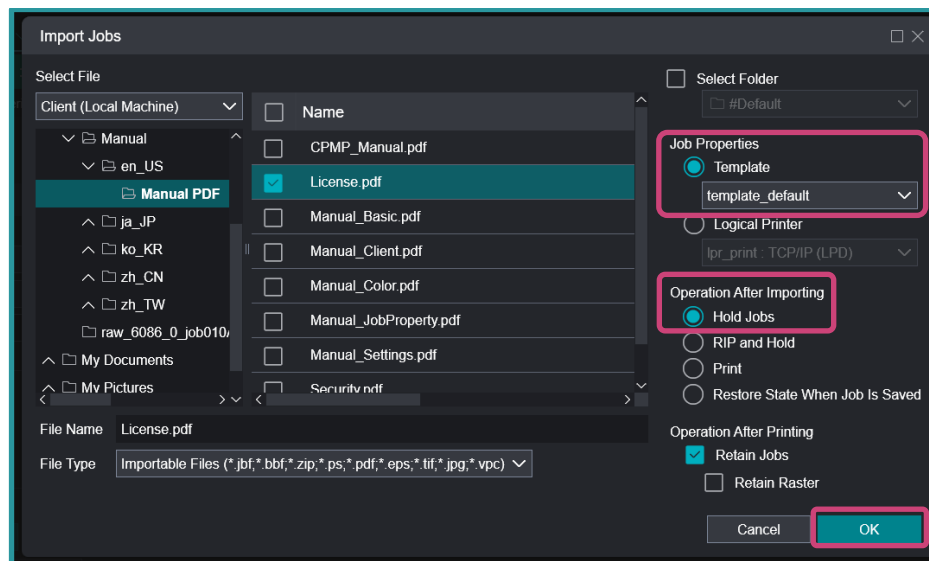
Sharpness for Images



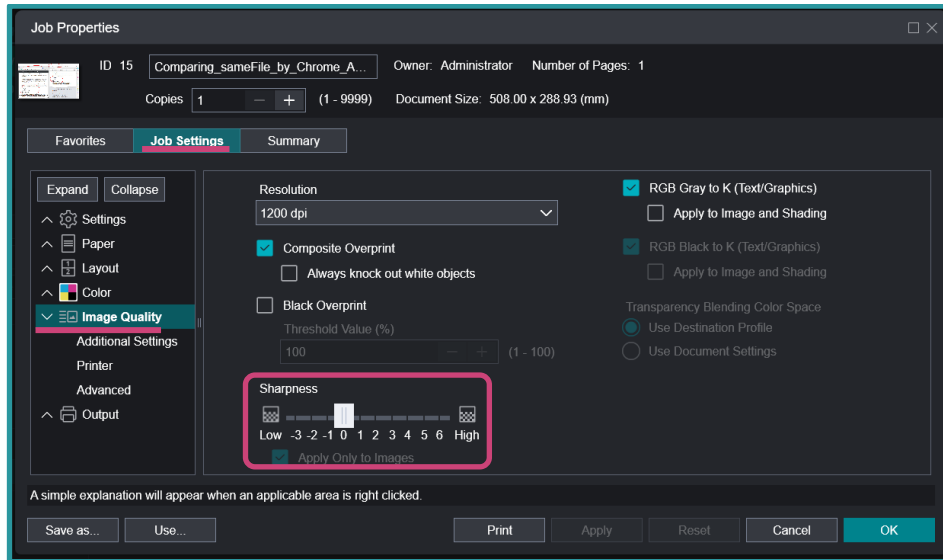
1. In the **Shortcut Area**, select **Import Jobs**



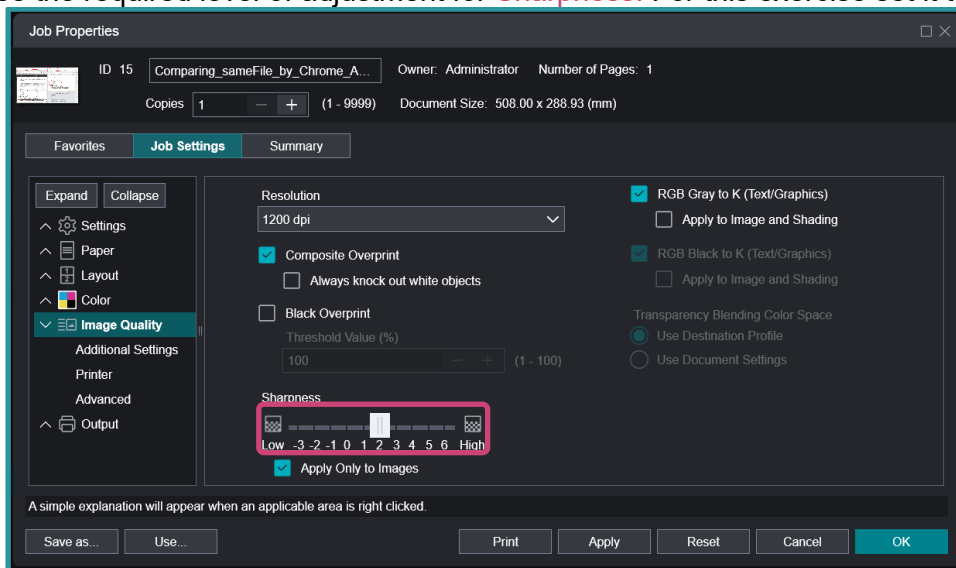
2. From the **Import Jobs** window (pop-up window), select the file you want to import. There might be an instance that you will need to browse through the folders to select your file.
3. Still on the **Import Jobs** window on the left side, under **Job Properties > Template** select **template_default**. On the same screen under **Operation After Importing**, select **Hold Jobs**, then press **OK**.



4. The job is imported in the **Held** list. Double-click on the imported job to display **Job Properties**
5. From the **Job Properties** window, select **Job Settings > Image Quality > Sharpness**



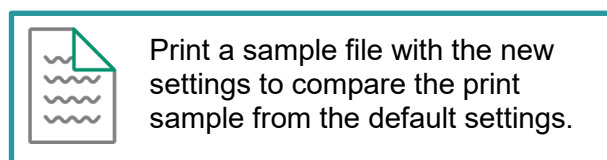
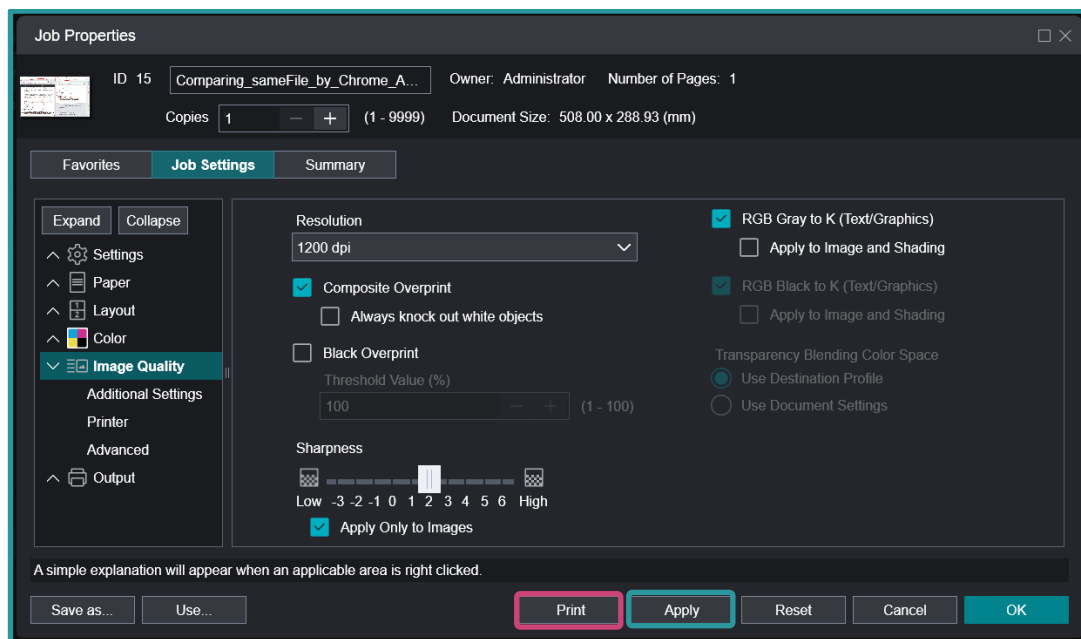
6. Choose the required level of adjustment for **Sharpness**. For this exercise set it to **2**.



7. Click **Apply** to set the changes made. Press **Print** to proceed with printing with the sharpness applied.



To apply sharpness to **text and line** (vector elements), uncheck **Apply Only to Images**. This helps avoid fatness of text and lines on halftone background.



Congratulations you have now completed this exercise.

FUJIFILM

For more information, visit us at
 FUJIFILM Business Innovation Asia Pacific Pte. Ltd
support-fb.fujifilm.com
 FUJIFILM and FUJIFILM logo are registered trademarks or trademarks of FUJIFILM Corporation