



How to Adjust Text/Line Weight

GP Controller for ApeosPro
C810/C750/C650

Version 1.0

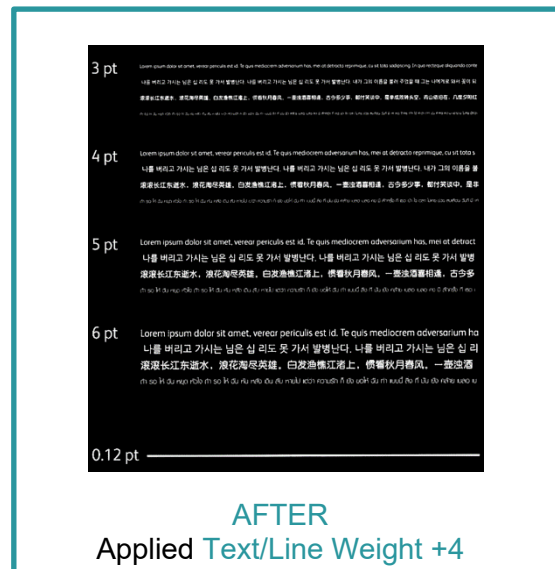
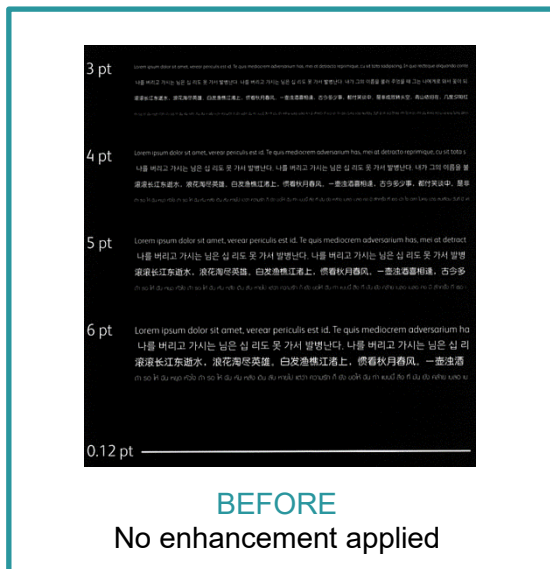
Overview

This exercise will demonstrate the ability to make changes to the default **Adjust Text/Line Weight** setting. This feature can modify the outline to a specified density and achieve clearer, sharper printed results for text/line elements. It can be used to improve image quality when a design has reversed text and fine lines (i.e white text on a black solid).


Objective

By the end of this exercise users will be able to:

- Navigate the feature on the GP Controller
- Make an adjustment to the default value
- Compare the results

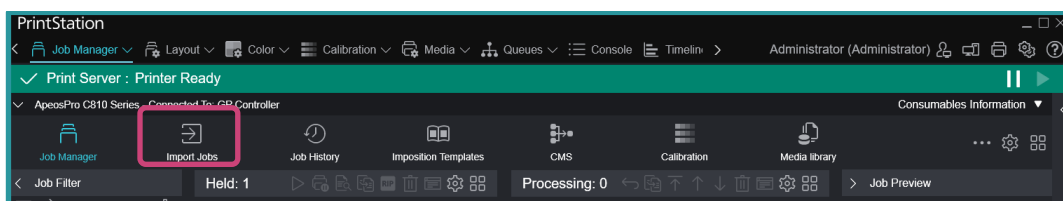


Adjust Text/Line Weight

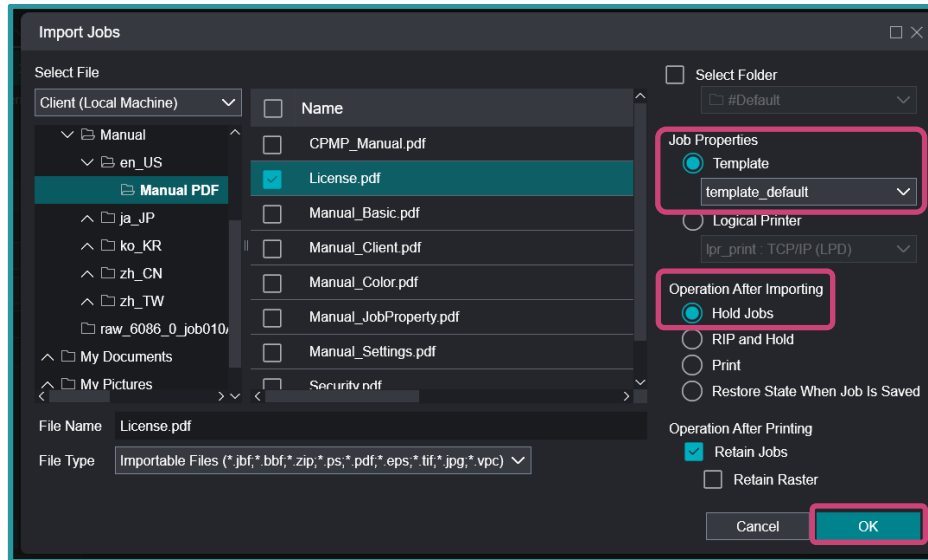


Print a sample file with the default setting before making the following adjustment

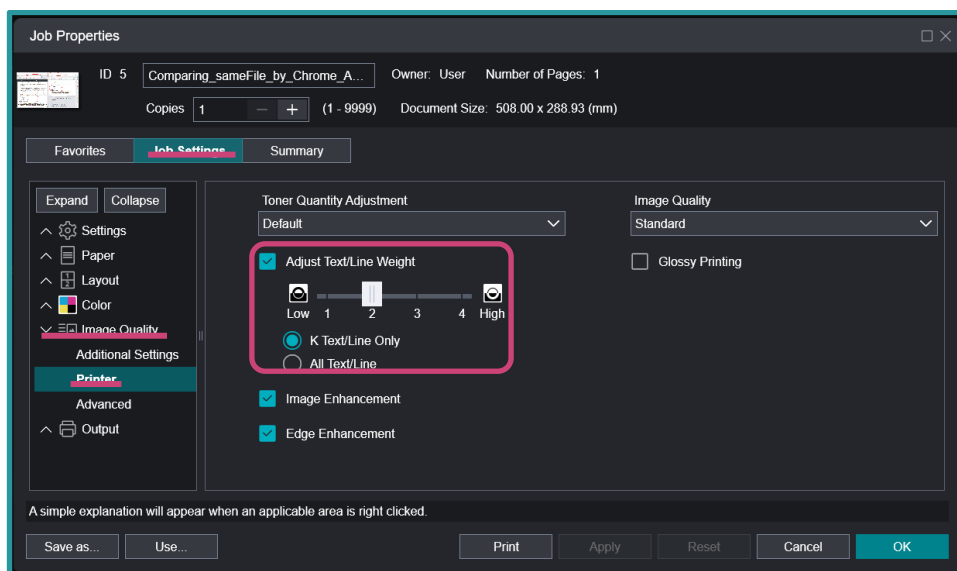
1. In the **Shortcut Area**, select **Import Jobs**.



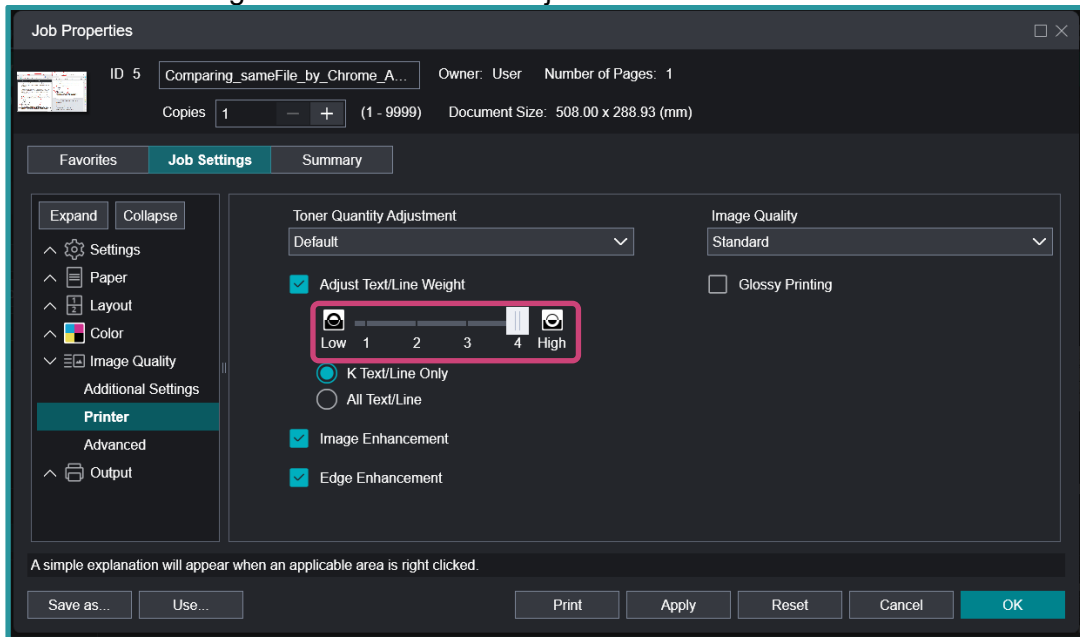
- From the **Import Jobs** window (pop-up window), select the file you want to import. There might be an instance that you will need to browse through the folders to select your file.
- Still on the **Import Jobs** window on the left side, under **Job Properties** > **Template** select **template default**. On the same screen under **Operation After Importing**, select **Hold Jobs**, then press **OK**.



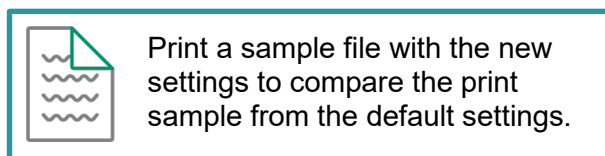
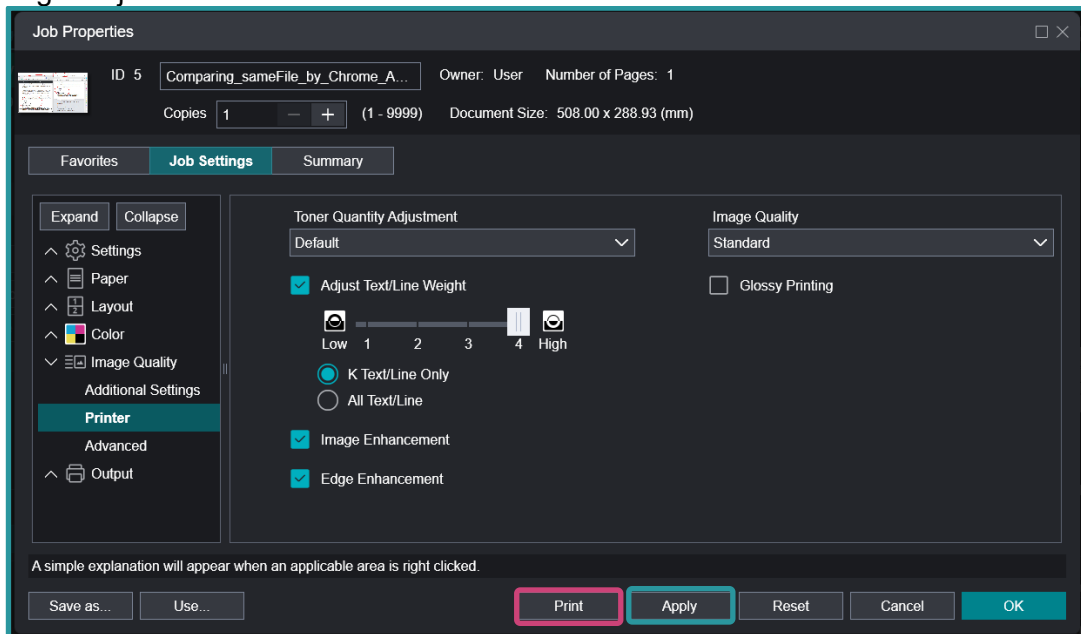
- The job is imported in the **Held** list. Double-click on the imported job to display **Job Properties**
- From the **Job Properties** window, select **Job Settings** > **Image Quality** > **Printer** > **Adjust Text/Line Weight**.



6. Choose the required level of adjustment for **Adjust Text/Line Weight**. For this exercise set it to 4 which is the highest number for this adjustment.



7. Click **Apply** to set the changes made. Press **Print** to proceed with printing with the text/line weight adjustment.



Congratulations you have now completed this exercise.

FUJIFILM

For more information, visit us at

FUJIFILM Business Innovation Asia Pacific Pte. Ltd

support-fb.fujifilm.com

FUJIFILM and FUJIFILM logo are registered trademarks or trademarks of FUJIFILM Corporation
