



How to Apply a CMYK Source Profile

GP Controller for ApeosPro
C810/C750/C650

Version 1.0

Overview

This exercise will demonstrate the ability to apply a CMYK simulation to printed output, by specifying a CMYK source profile. This feature can be used to simulate printing standards such as ISO Coated V2, GRACol 2006 and JapanColor2001 Coated. Output devices from the FUJIFILM Business Innovation Corporation printing portfolio can also be simulated using this feature.

Objective

By the end of this exercise users will be able to:

- Navigate to the location of the setting on the GP Controller
- Make an adjustment to the default value
- Compare the results

BEFORE



Color matching with NO CMYK standards

AFTER



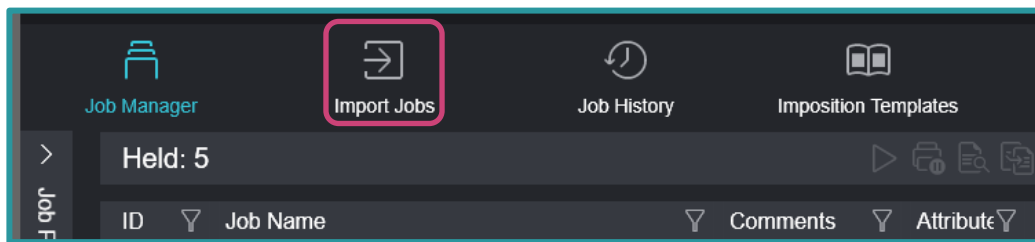
CMYK Matching using CMYK standards

Select CMYK Source Profile

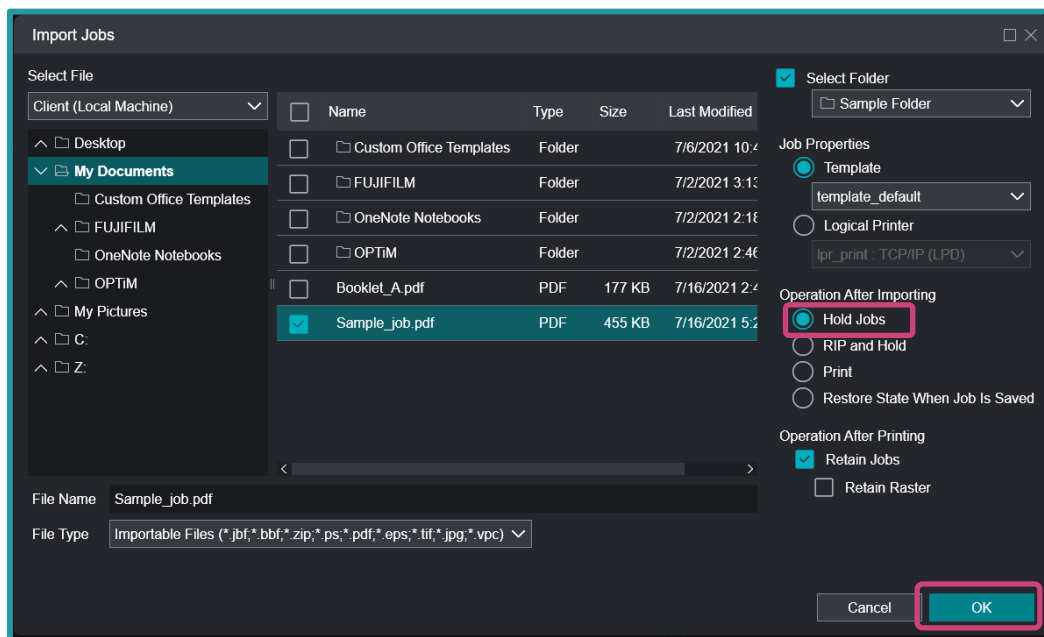
Print a sample file with the default setting before making the following adjustment.



1. In the shortcut area, select **Import Jobs**

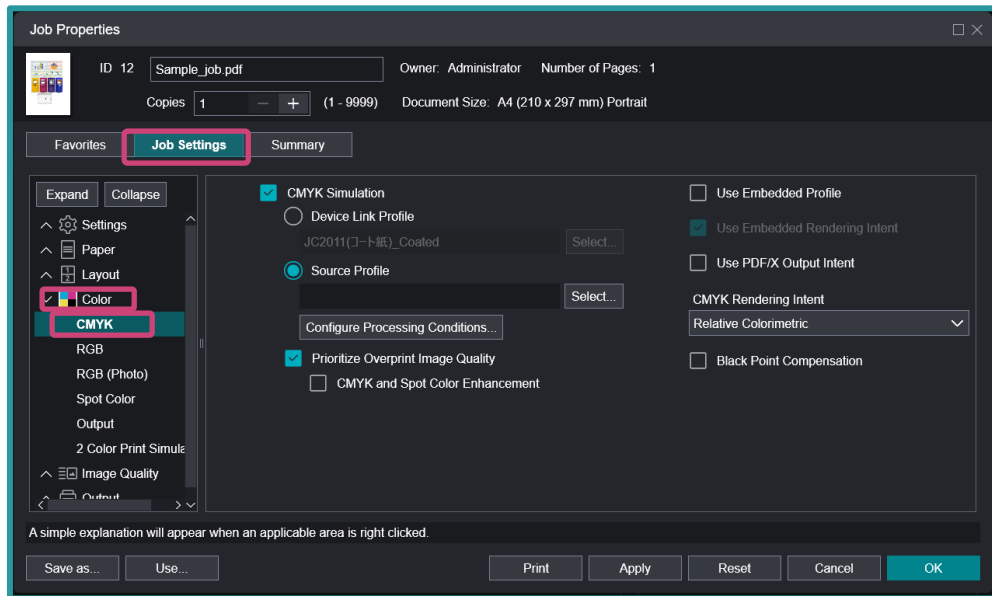


2. Select a sample job to import and select **Hold Jobs** in Operation After Importing and then click **OK**.

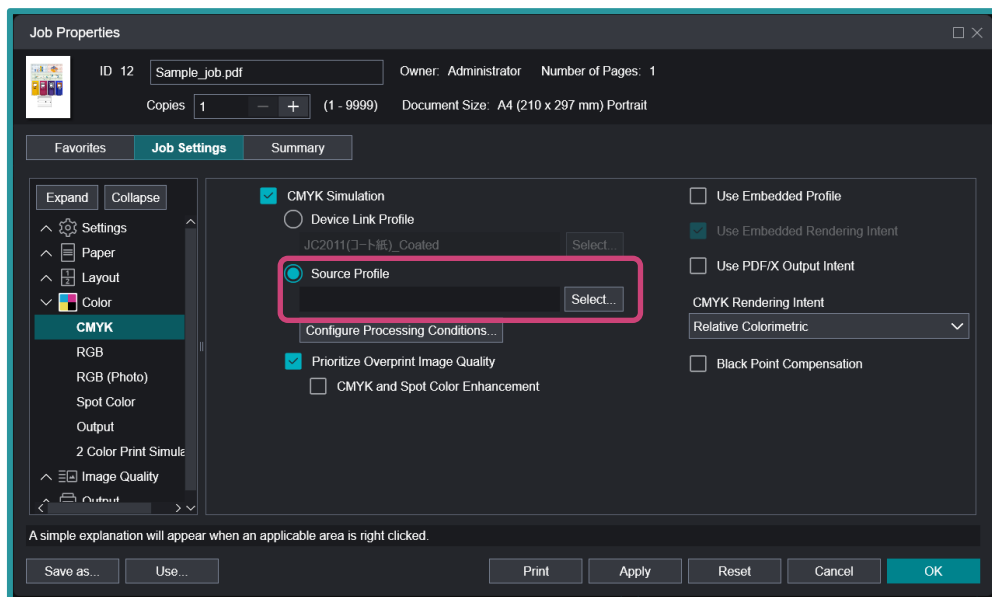


3. Double-click the imported job to display the Job Properties.

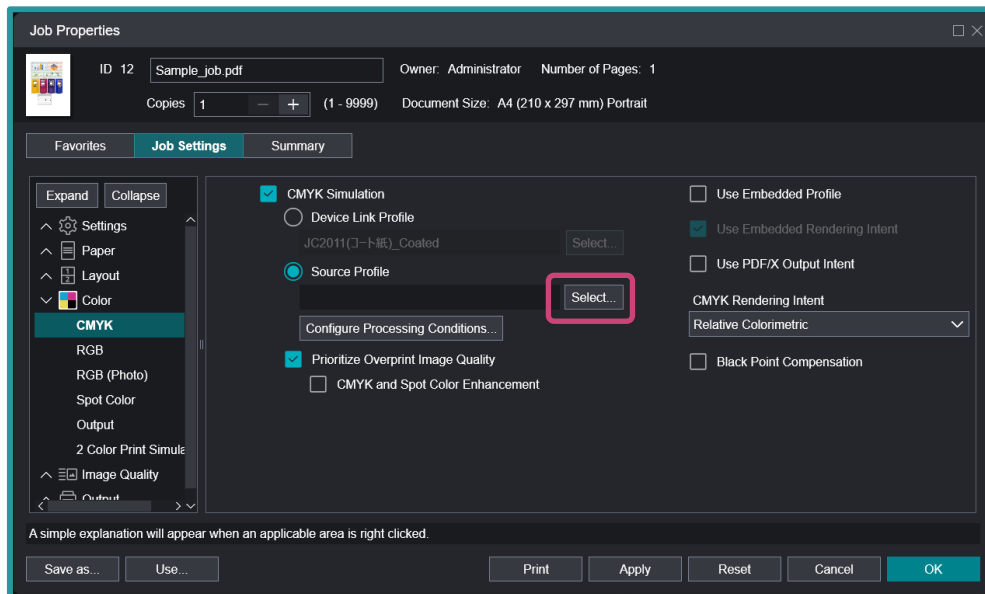
4. Select **Job Settings** > **Color** > **CMYK**.



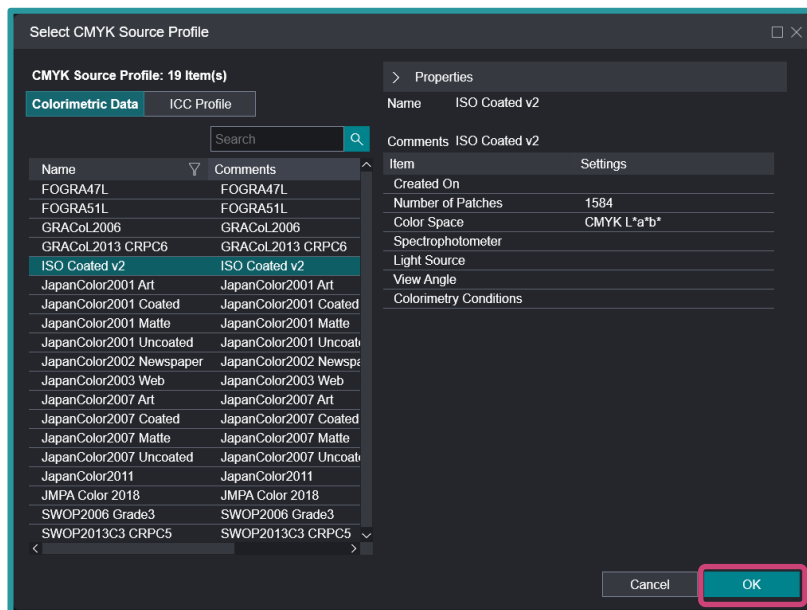
5. Select **Source Profile** in CMYK Simulation.



6. Click the **Select...** button in [Source Profile].



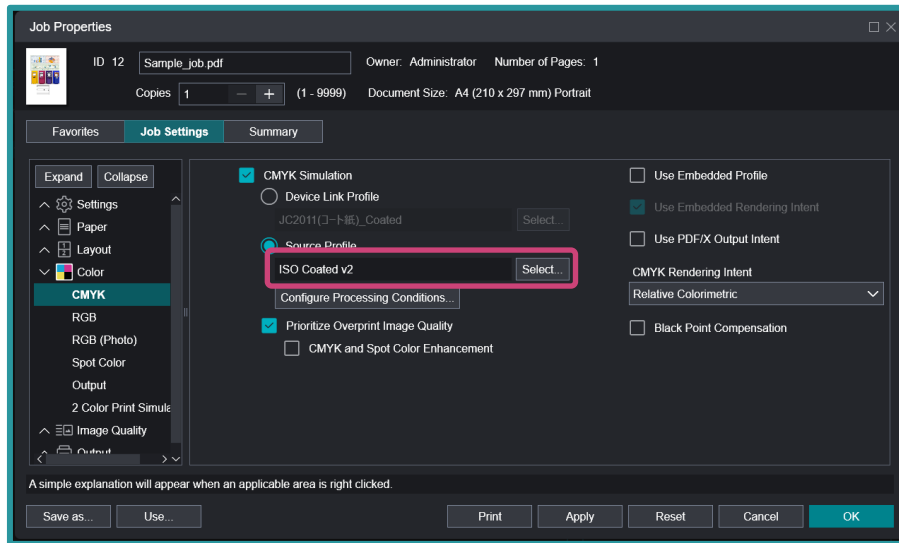
7. Select the source profile (i.e. **ISO Coated v2**) and click **OK**.



The selection of available [Colorimetric Data] is listed when the dialog displays. To select an ICC profile, please click [ICC Profile].



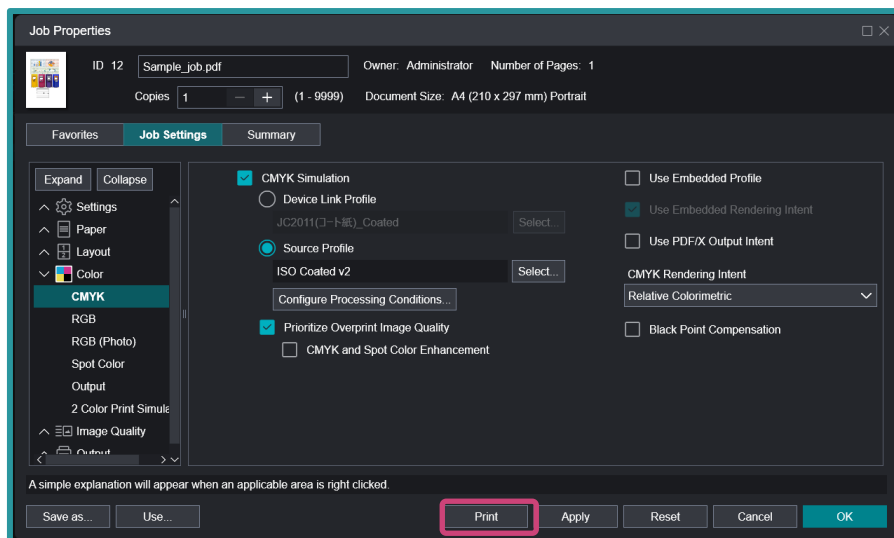
8. Confirm the selected source profile is displayed (i.e. **ISO Coated v2**).



When **Fast Profile Creation** is checked under **Configure Processing Conditions...**, a faster algorithm to combine the source profile and destination profile is used.



9. Click [Print] to print and review the printout



Congratulations you have now completed this exercise.



For more information, visit us at

FUJIFILM Business Innovation Asia Pacific Pte. Ltd

support-fb.fujifilm.com

FUJIFILM and FUJIFILM logo are registered trademarks or trademarks of FUJIFILM Corporation
