



How to Print Using The PDF Printer Driver

GP Controller for ApeosPro
C810/C750/C650

Version 1.0

Overview

This exercise will demonstrate the benefit of printing from a Windows PC only client computer using the GP Controller PDF Printer Driver. An Adobe Postscript Driver is also provided for the GP Controller as another option for common printing applications (for both Mac and Windows PC). However, the GP Controller also provides The PDF Printer Driver (Only supported on Windows PC), which enables users to produce an improved printed output for certain Microsoft Office applications. The PDF Printer Driver also supports 'pass-through mode' for some applications, which enables users to send the pdf file to the GP Controller whilst using a familiar printer driver interface. This demonstration will allow the user to compare the two printer driver options.

Supported applications for pass-through mode:

- Adobe Acrobat XI or later version
- Adobe Reader XI or later version
- Adobe InDesign CC 2014 or later version

Objective

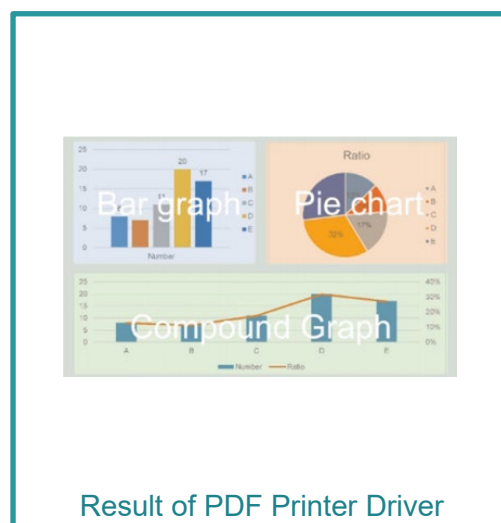
By the end of this exercise users will be able to:

- Print from an application using both the PostScript Printer Driver and PDF Printer Driver
- Discover the benefits of using the GP Controller Print Server PDF Printer Driver
- Learn how 'pass-through mode' works

BEFORE



AFTER



Printing from Microsoft Excel

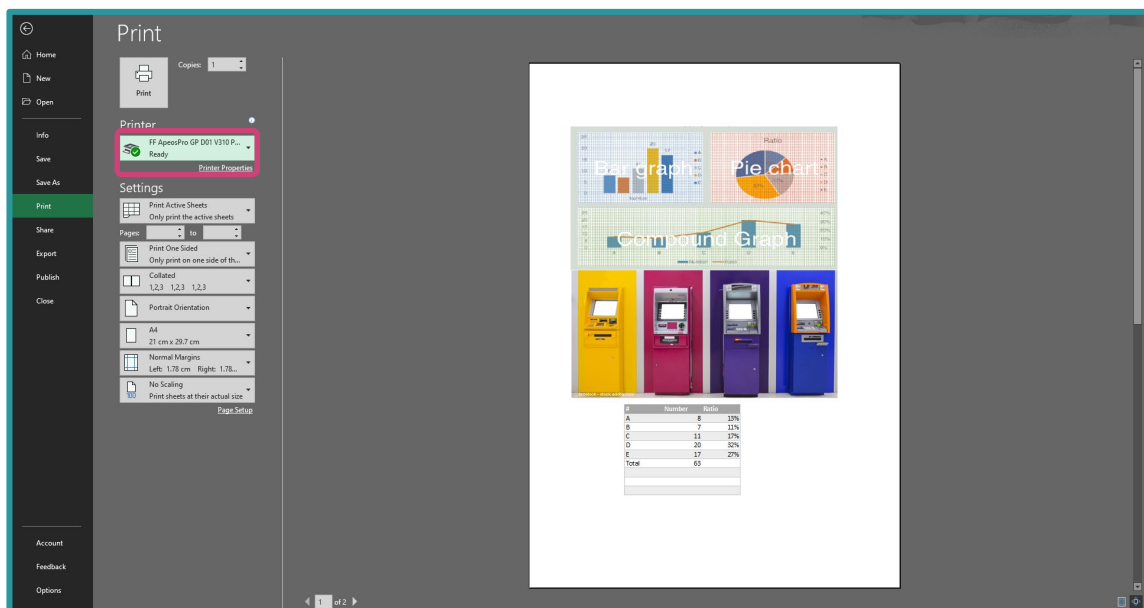


For comparison, please install both the PS Printer Driver and PDF Printer Driver by referencing:
[HTD_how_to_install_printer_driver_windows10-gp-apc810.pdf](#)

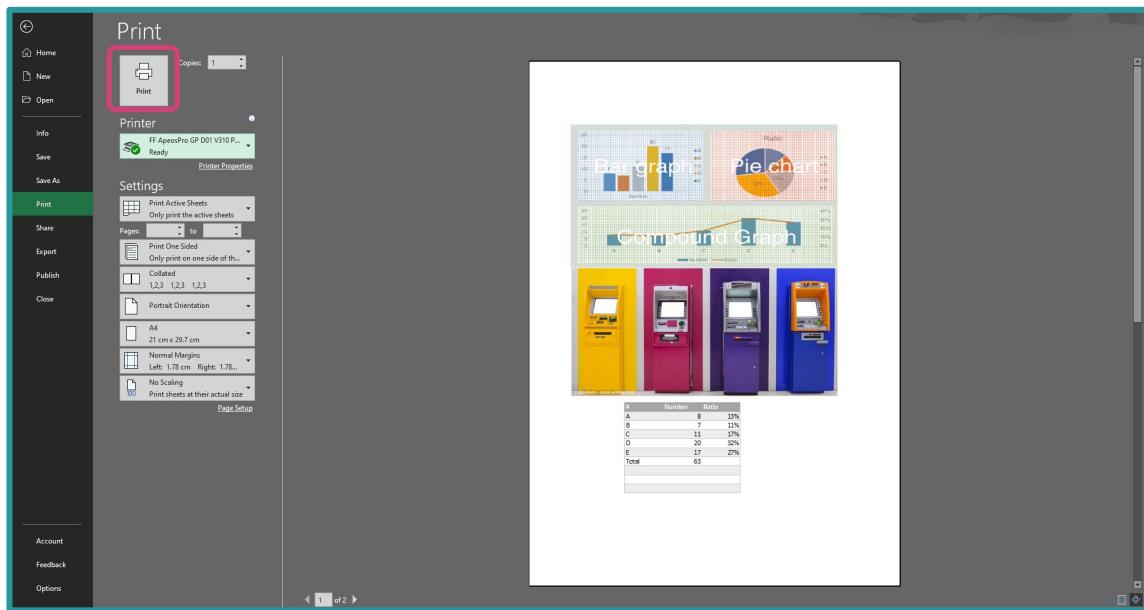
1. Open a MS Excel document.
2. Select **File > Print**.



3. In the Printer drop down menu, select the **PDF Printer Driver for GP Controller**.

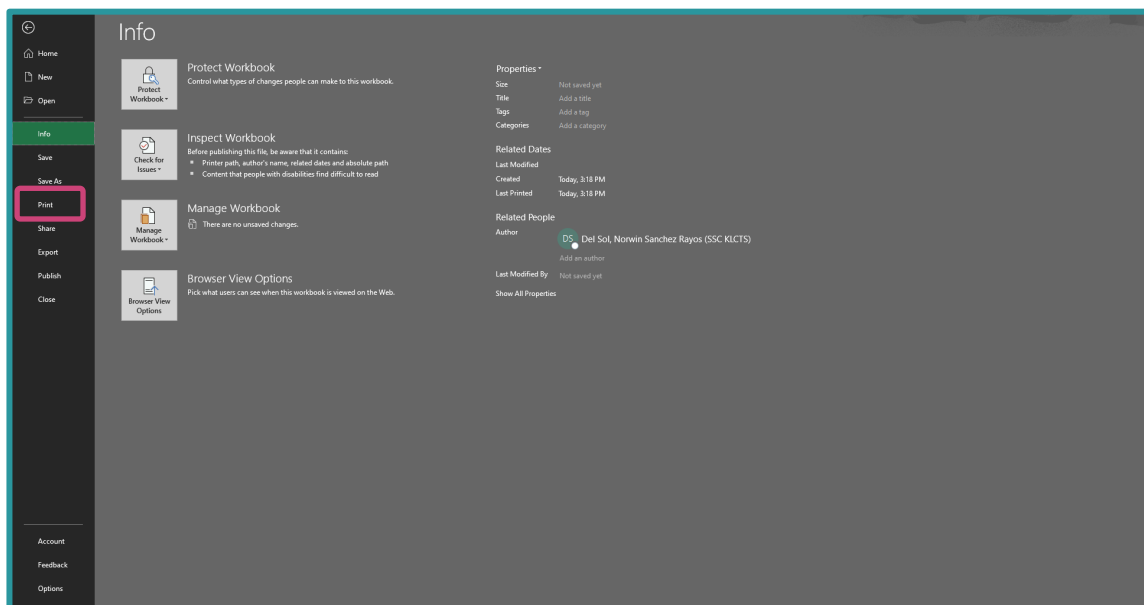


4. Click **Print**.

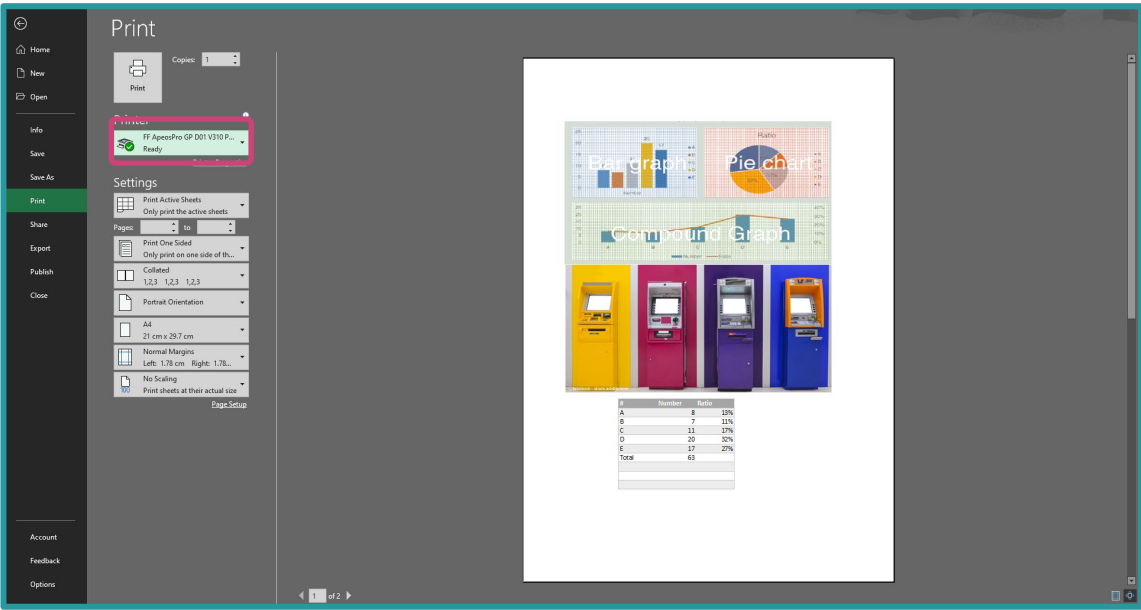


You have now printed a document from Excel and next will print the same document using a PS Driver to compare the results.

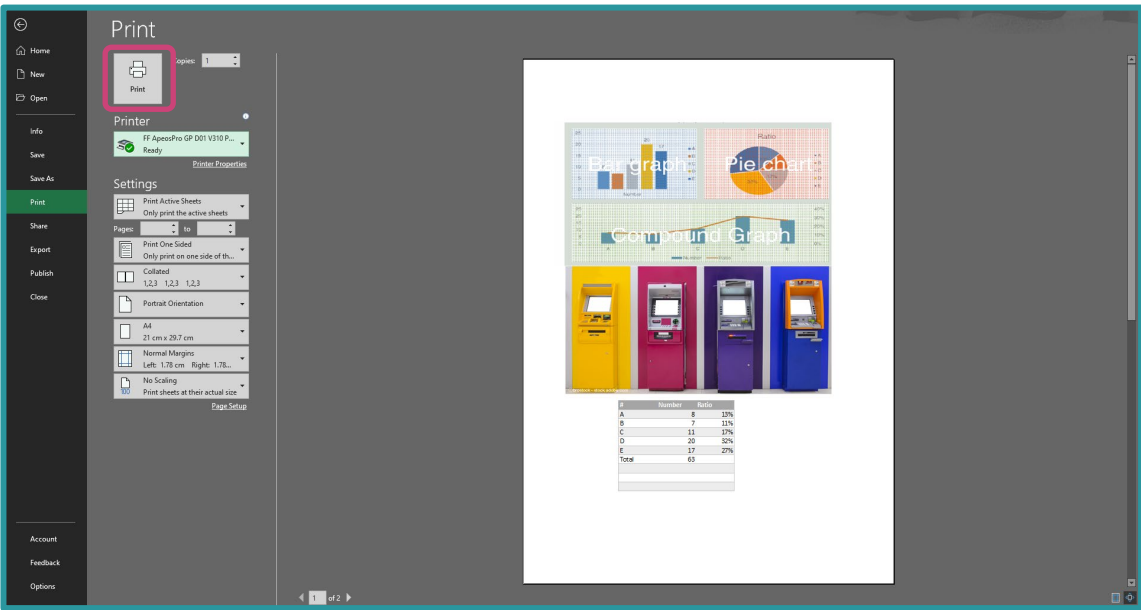
5. Select **File > Print**.



6. From the Printer drop down menu, select the **PS Printer Driver for GP Controller**.



7. Click **Print**.



8. Compare the printed output from PS Printer Driver and PDF Printer Driver.

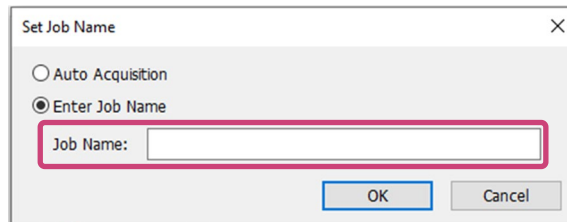
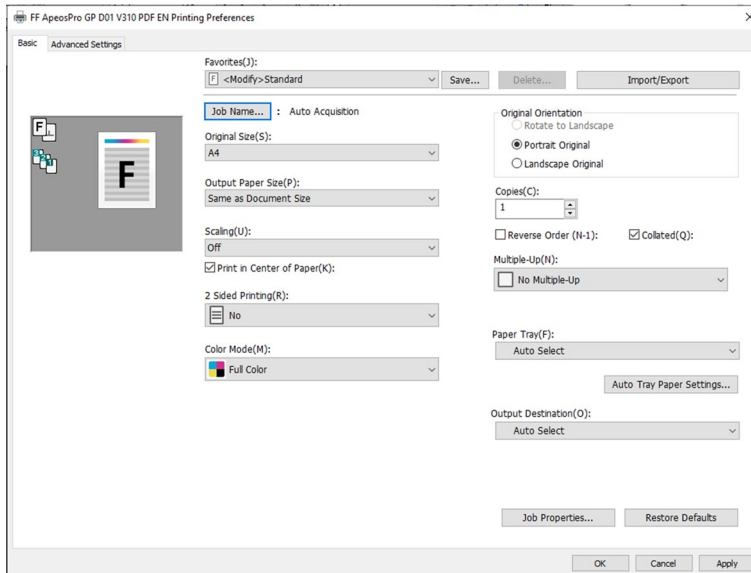
You have now completed this exercise.

To practice the process of printing using 'pass-through mode', please continue the next exercise.

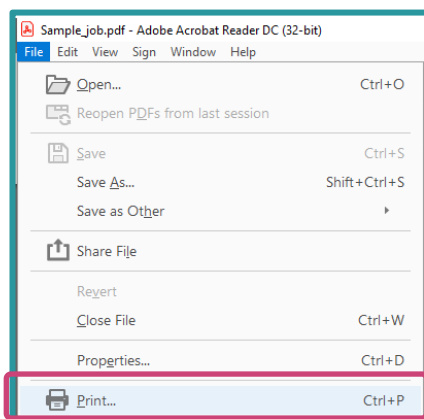
Printing from Acrobat DC pass-through mode

Note:

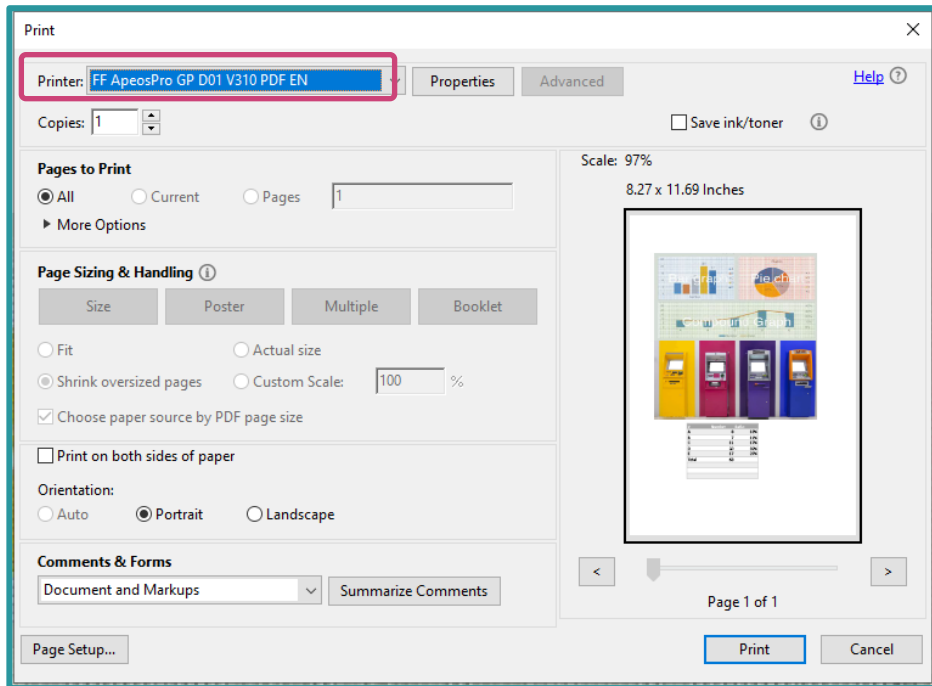
When pass-through mode is used, the job name becomes 'unknown_xxxxxxx'. In order to set the job name, please click Job Name in the Properties dialog box.



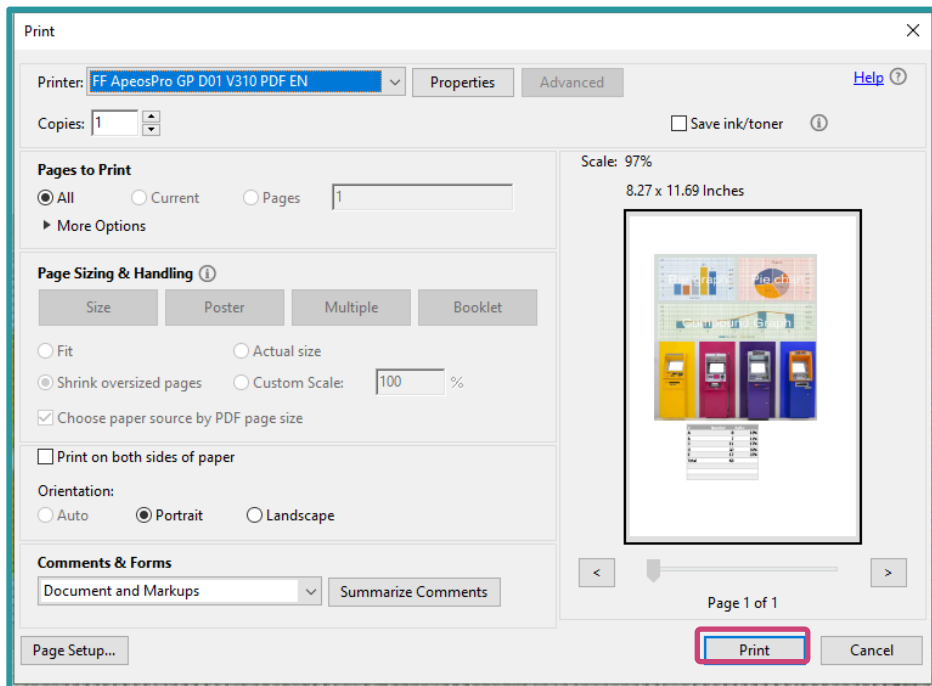
1. Open the sample PDF job by double clicking the file.
2. Select **File > Print**.



3. From the Printer drop down menu, select the **PDF Driver for GP Controller**.

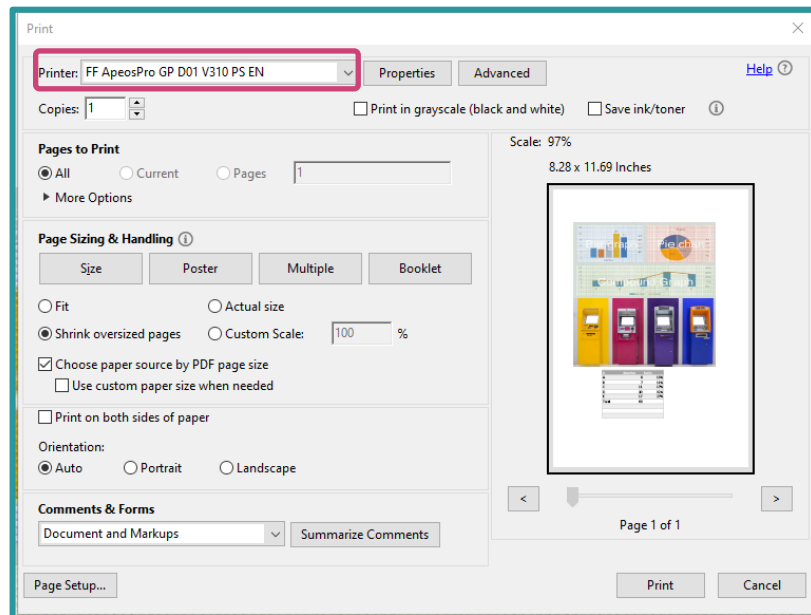


4. Click **Print**.

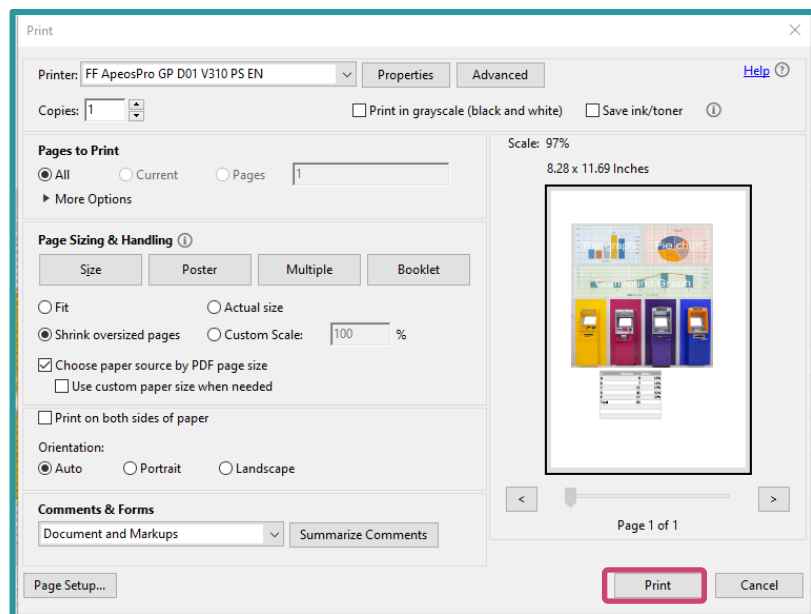


You have printed a document from Acrobat DC using 'pass-through mode' and will now print the same document using a PS Driver (without pass through mode), to compare the results.

1. From the Printer drop down menu, select the **PS Printer Driver for GP Controller**.



2. Click **Print**



Please note: This demonstration shows that it may take more time to send the data to the GP Controller Print Server using the PS Driver.

The improvements made by converting some applications directly to PDF data and using 'pass-through mode' can greatly reduce processing times due to potentially smaller file sizes.

Congratulations you have now completed this exercise.

FUJIFILM

For more information, visit us at

FUJIFILM Business Innovation Asia Pacific Pte. Ltd

support-fb.fujifilm.com

FUJIFILM and FUJIFILM logo are registered trademarks or trademarks of FUJIFILM Corporation
