

How to Print Crease Marks

GP Controller for ApeosPro
C810/C750/C650

Version 1.0

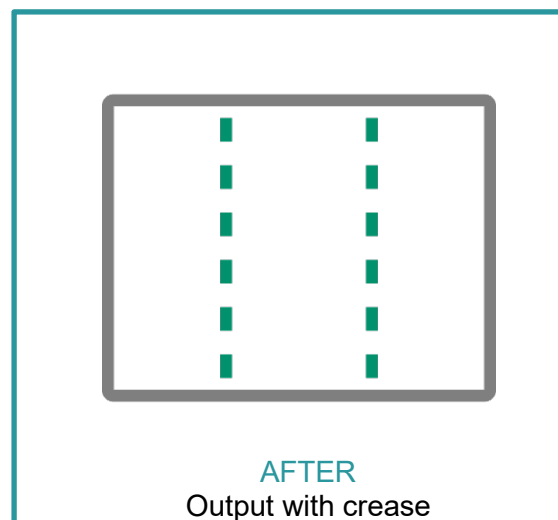
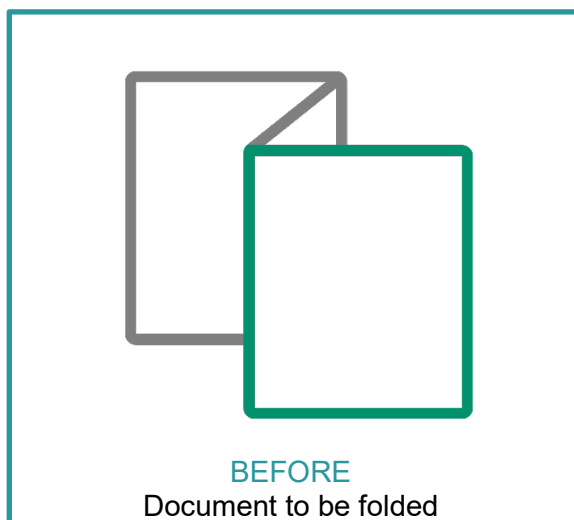
Overview

This exercise will demonstrate the ability to make a **crease** effect on a job using the GP Controller. The user can set **crease finishing options** using a **preset**. This exercise will also demonstrate the way to **configure custom crease settings** while previewing the effect.

Objective

By the end of this exercise users will be able to:

- Navigate the feature on the GP Controller
- Select a crease type from preset settings
- Configure a custom crease setting



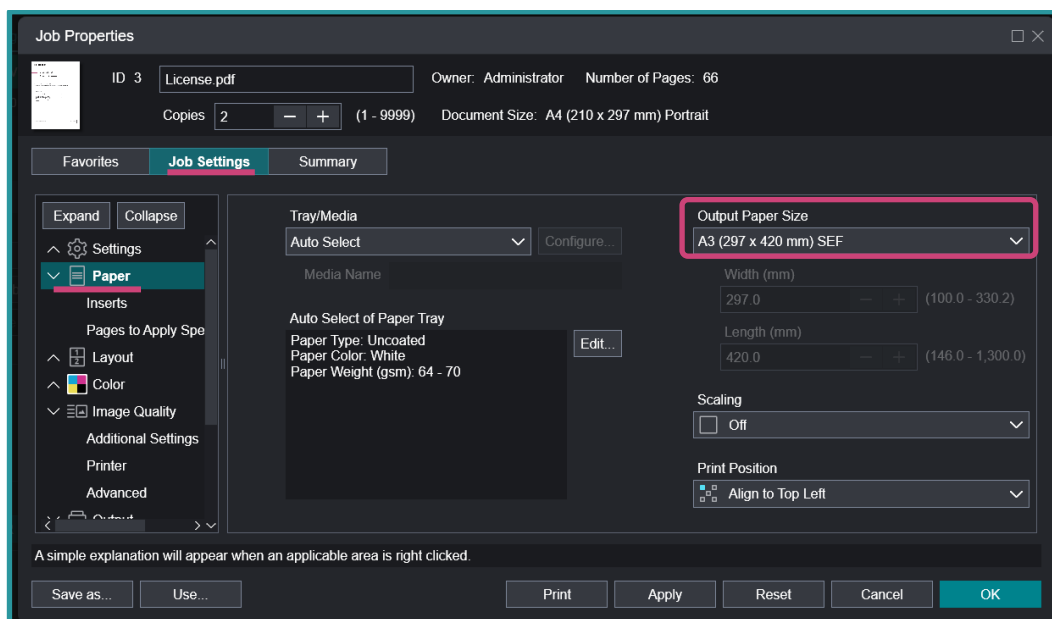
A physical crease can be applied when the [Optional Crease/Two-Sided Trimmer](#) is installed on the printer.

Configure Crease Setting using Preset Type

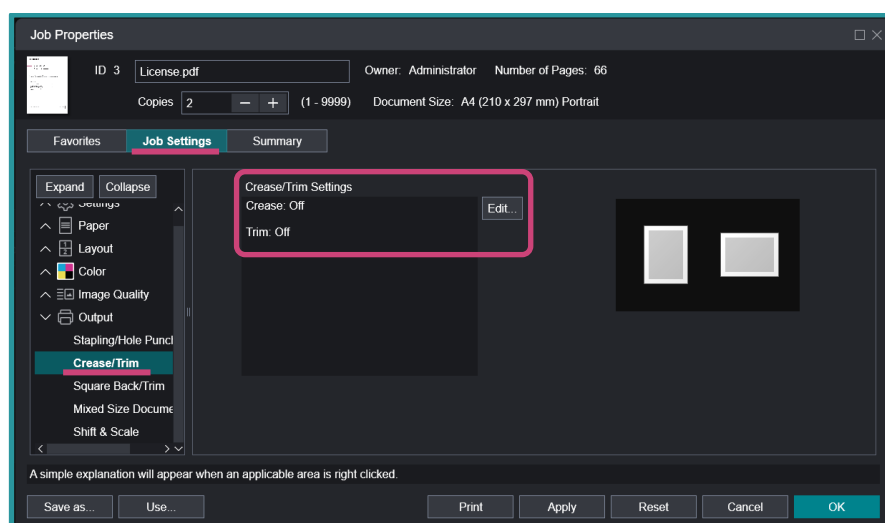


Please note, that this How To document is part of a set. If you cannot complete some of the following steps please refer to the other referenced documents. Example [Open the Job Properties](#) is further explained in [How to import a job.pdf](#)

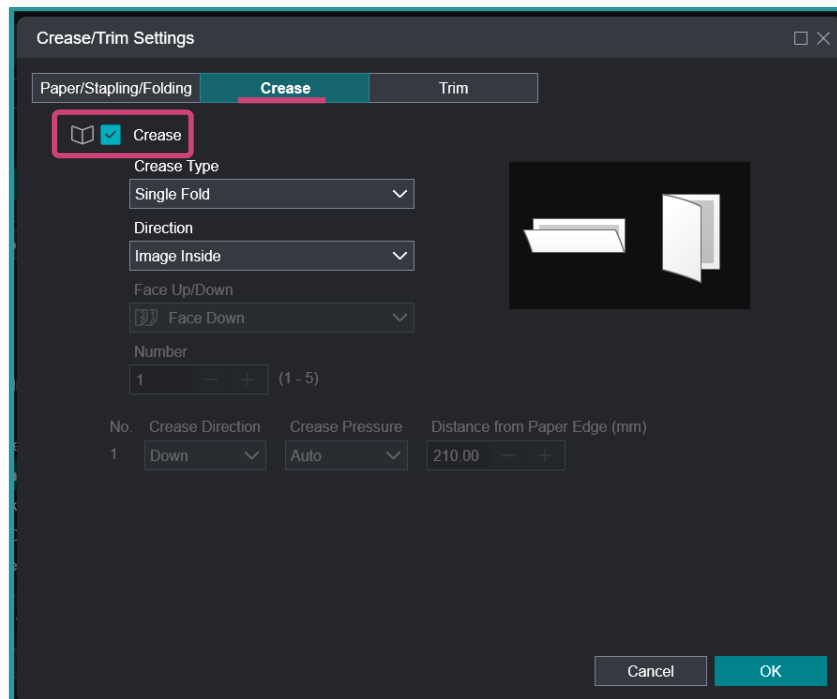
1. Open [Job Properties](#) and select **Job Settings** > **Paper**. From the 'Output Paper Size' drop down menu, select a specific paper size such as **A3 (297x 420 mm) SEF**. Choose any paper size available other than the default 'Same as Document Size'.



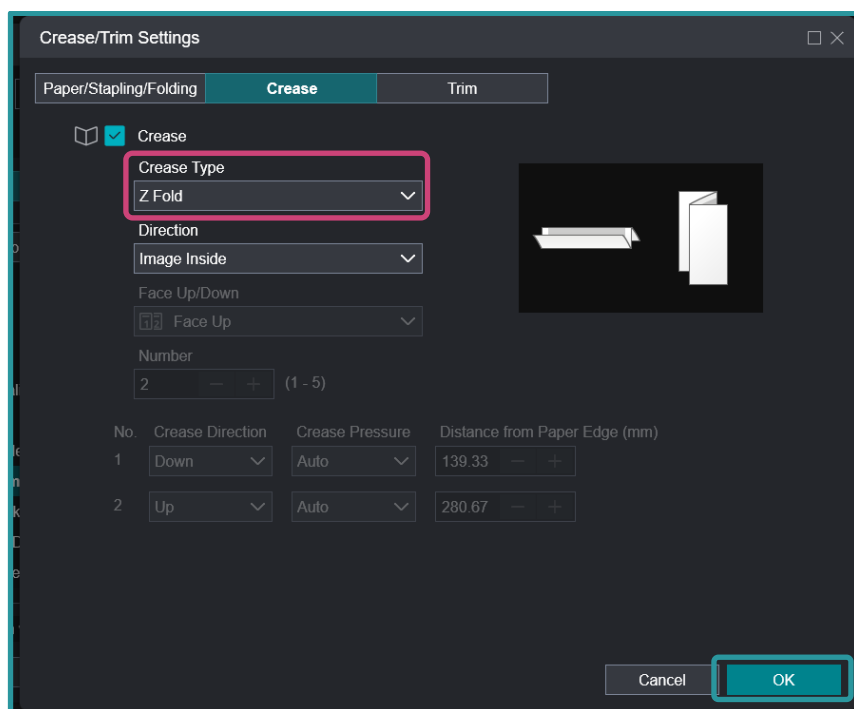
2. From the [Job Properties](#) > [Job Settings](#) window, select **Output** > **Crease/Trim**. From the [Crease/Trim Settings](#), select **Edit**.



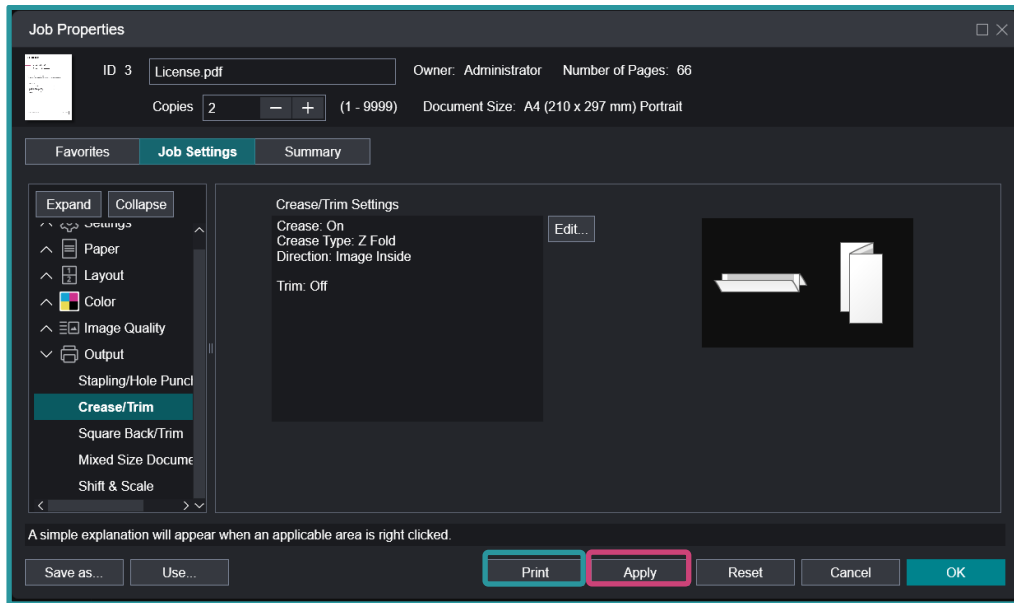
3. Select the **Crease** tab and click the check box beside **Crease**.



4. From the 'Crease Type' drop down menu, select **Z Fold**, then click **OK**.

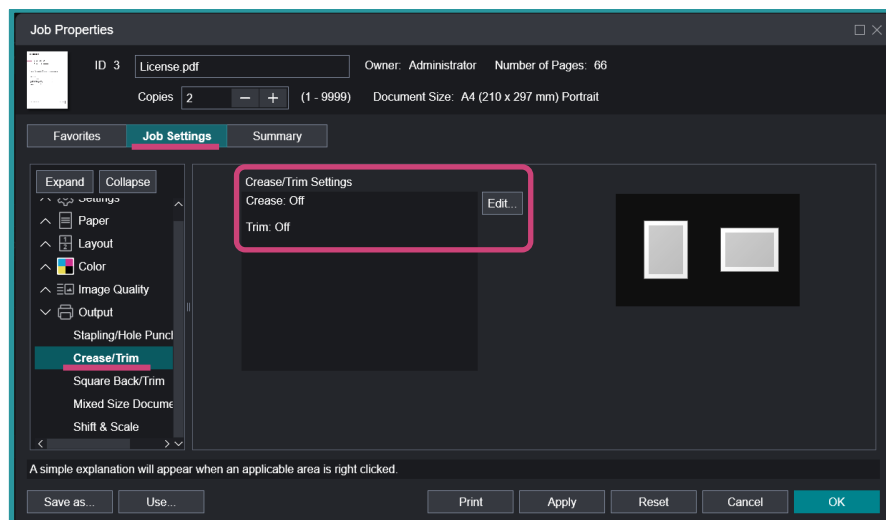


- From the Job Properties window, click **Apply**, and then select **Print**.

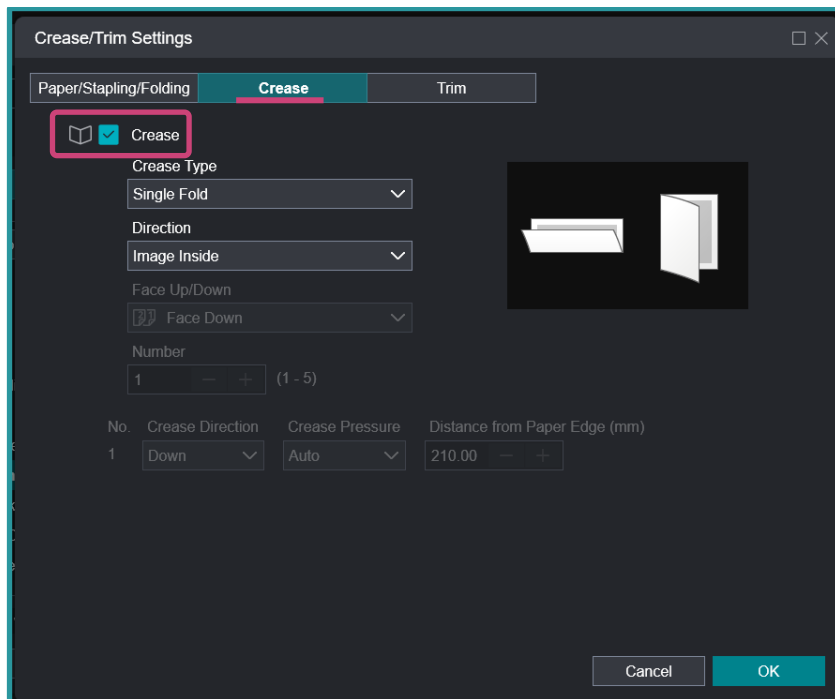


Configure Crease Setting using Custom Type

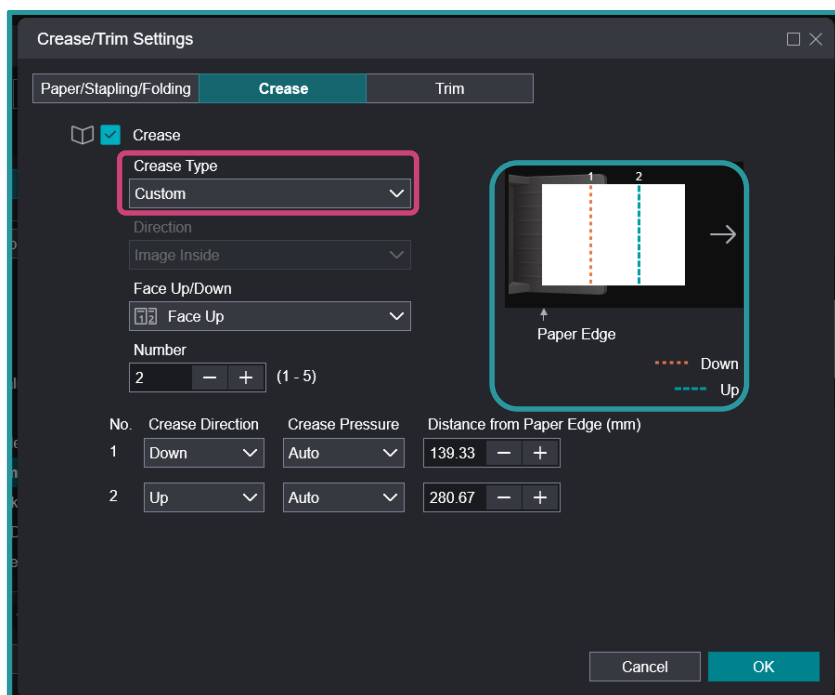
- In 'Job Properties', from the 'Job Settings' tab, select **Output > Crease/Trim**. From the **Crease/Trim Settings**, select **Edit**.



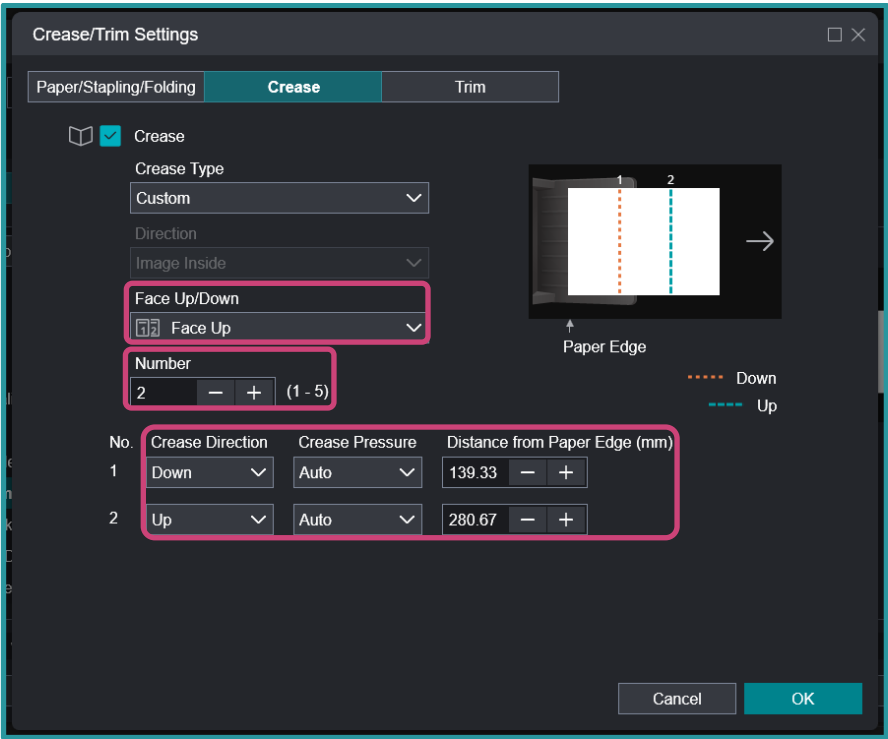
2. Select the **Crease** tab, then click the check box beside **Crease**.



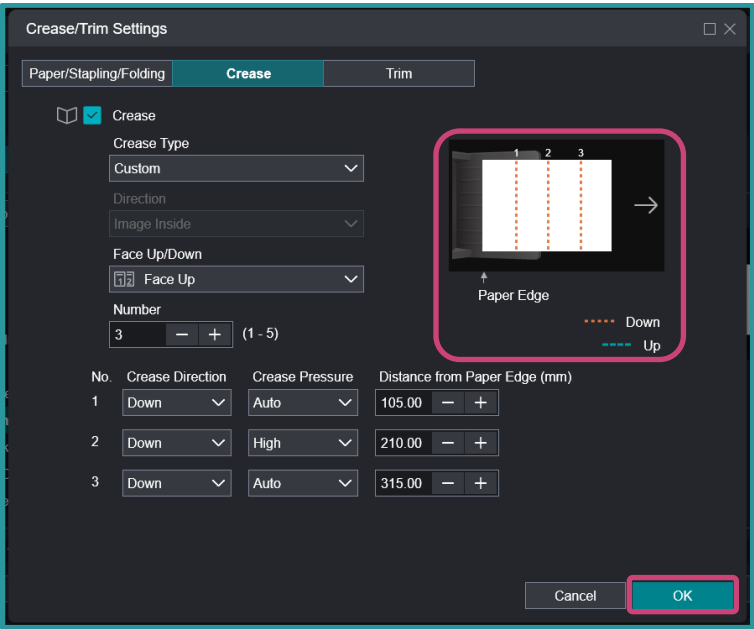
3. From the **Crease/Trim Settings** window, select **Crease Type > Custom**. A preview window of the current setting will be displayed on the right.



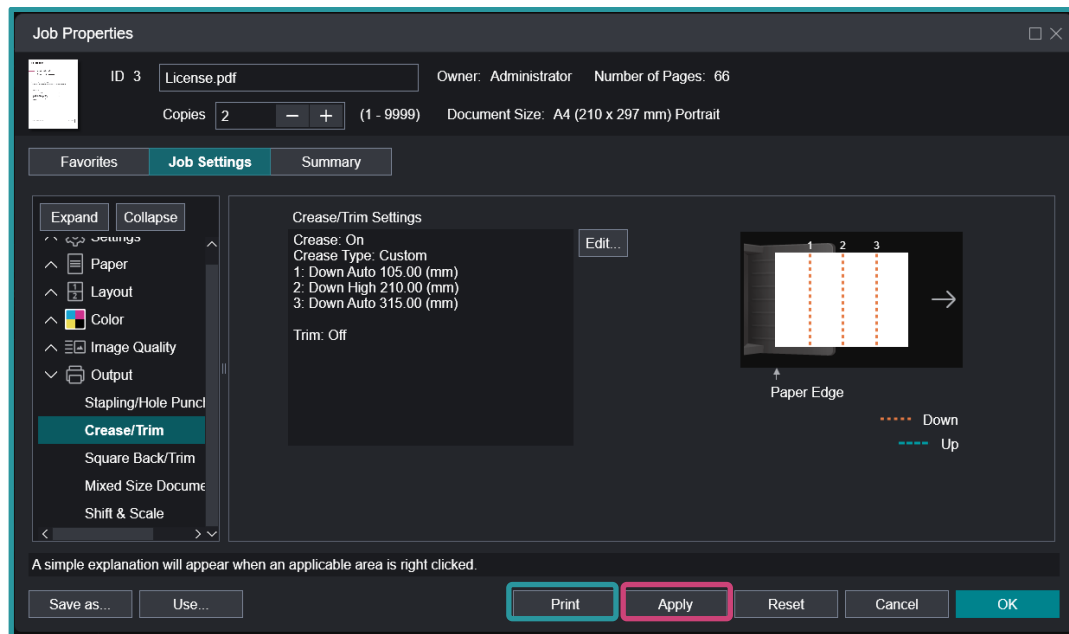
4. You can adjust either face up or face down under **Face Up/Down** options. Number of creases can be adjusted under the **Number** option. Other settings such as direction, pressure, and distance can also be adjusted following **Crease Direction**, **Crease Pressure**, and **Distance from Paper Edge (mm)** options.



5. The configured settings are reflected in the thumbnail preview. Click **OK**.



6. From the Job Properties window, click **Apply**, then select **Print**.



Congratulations you have now completed this exercise.

FUJIFILM

For more information, visit us at

FUJIFILM Business Innovation Asia Pacific Pte. Ltd

support-fb.fujifilm.com

FUJIFILM and FUJIFILM logo are registered trademarks or trademarks of FUJIFILM Corporation