

# How to Shut Down the GP Controller

GP Controller for ApeosPro  
C810/C750/C650

Version 1.0

## Overview

This exercise will demonstrate two methods for shutting down the GP Controller application. These methods are useful for troubleshooting when resolving a problem. The procedures outlined below are not in order and should be completed as two individual tasks.

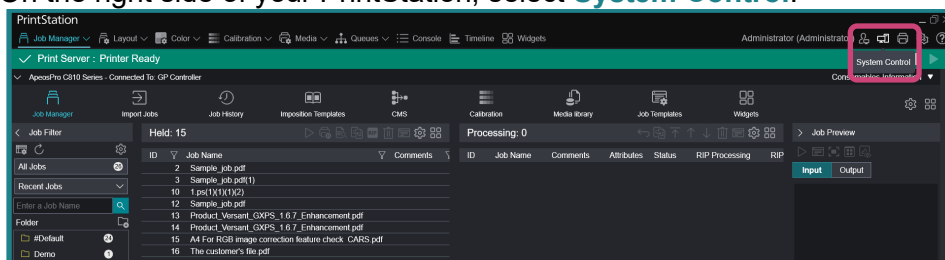
## Objective

By the end of this exercise users will be able to:

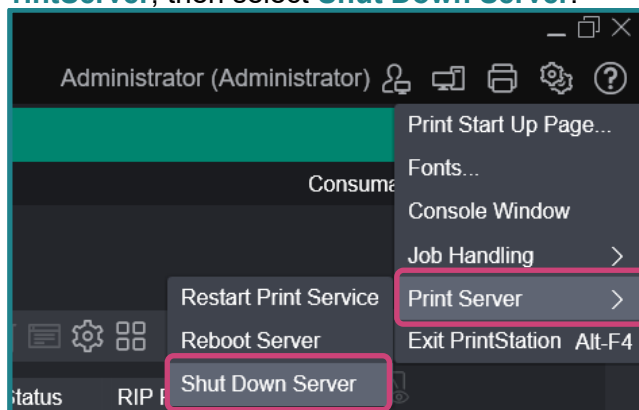
- Perform Shut Down procedure for GP Controller
- Perform Shut Down procedure for the Windows Operating System

## Shut Down procedure for GP Controller

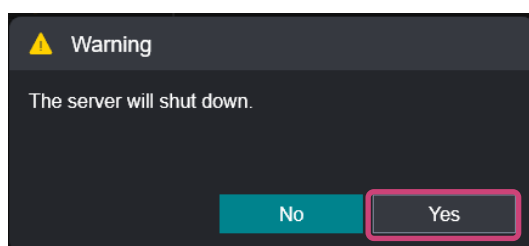
1. On the right side of your PrintStation, select **System Control**.



2. Go to **PrintServer**, then select **Shut Down Server**.



3. A warning screen will appear, to continue click **OK**.

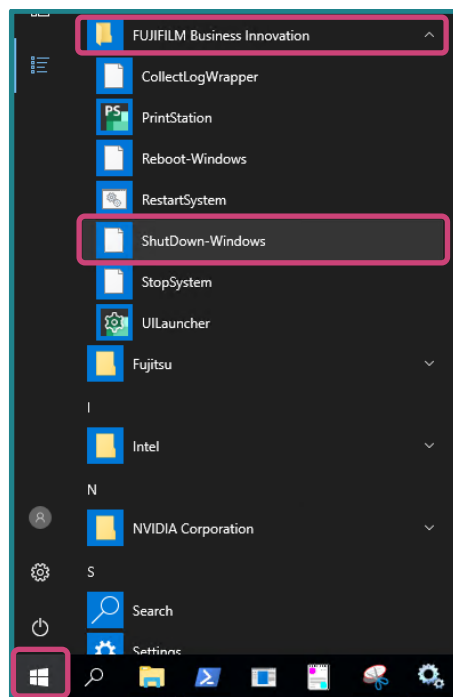


4. GP Controller will now proceed to shut down.

Congratulations you have now completed this exercise.

## Shut Down procedure for Windows Operating System

1. Open GP Controller through Remote Desktop or access directly to the physical machine.
2. Select the **Windows Start** button, hover the cursor over **FUJIFILM Business Innovation** folder, click to expand it.
3. Select **ShutDown-Windows**.



4. The Windows system of GP Controller will proceed to shut down.

Congratulations you have now completed this exercise.

# FUJIFILM

For more information, visit us at

FUJIFILM Business Innovation Asia Pacific Pte. Ltd

[support-fb.fujifilm.com](mailto:support-fb.fujifilm.com)

FUJIFILM and FUJIFILM logo are registered trademarks or trademarks of FUJIFILM Corporation