

# How to Change the View of the Job List

## GX Print Server for Iridesse Production Press

Version 1.0



# Overview

This exercise will demonstrate the ability to configure the view of the job list on the GX Print Server “Job Manager”. The user can easily change the view of Processing and Completed job lists.

## Objective

By the end of this exercise users will be able to:

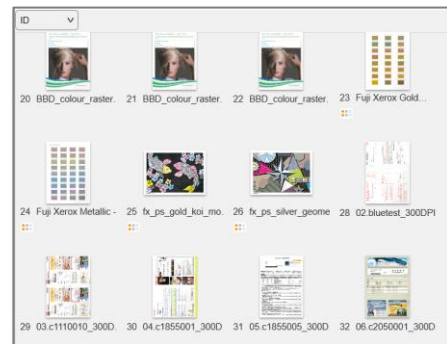
- Find the location of the setting on the GX Print Server
- Configure the view of job list

### BEFORE

ID	Name	Attribut	Size	Arrived
20	BBD_colour_raster_image_viewer_gxprintserver.pdf(1)		3,664 KB	2017/08/24
21	BBD_colour_raster_image_viewer_gxprintserver.pdf(1)		3,664 KB	2017/08/24
22	BBD_colour_raster_image_viewer_gxprintserver.pdf(2)		3,664 KB	2017/08/24
23	Fuji Xerox Gold Metallic - Standard.pdf	::	867 KB	2017/08/25
24	Fuji Xerox Metallic - Standard.pdf		883 KB	2017/08/25
25	fx_ps_gold_koi_mod.pdf	::	2,194 KB	2017/08/25
26	fx_ps_silver_geometry_Fix.pdf	::	8,515 KB	2017/08/25
28	02 bluestest_300DPI_FCOLOR_A3_100page.pdf		4,486 KB	2017/08/25
29	03.c1110010_300DPI_FCOLOR_A3_100page.pdf		7,006 KB	2017/08/25
30	04.c1855001_300DPI_FCOLOR_A3_100page.pdf		6,417 KB	2017/08/25
31	05.c1855005_300DPI_FCOLOR_A4_100page.pdf		18,403 KB	2017/08/25
32	06.c2050001_300DPI_FCOLOR_A4_100page.pdf		12,338 KB	2017/08/25
33	07.c3010003_300DPI_BW_A4_100page.pdf		1,151 KB	2017/08/25

Default view of Job List

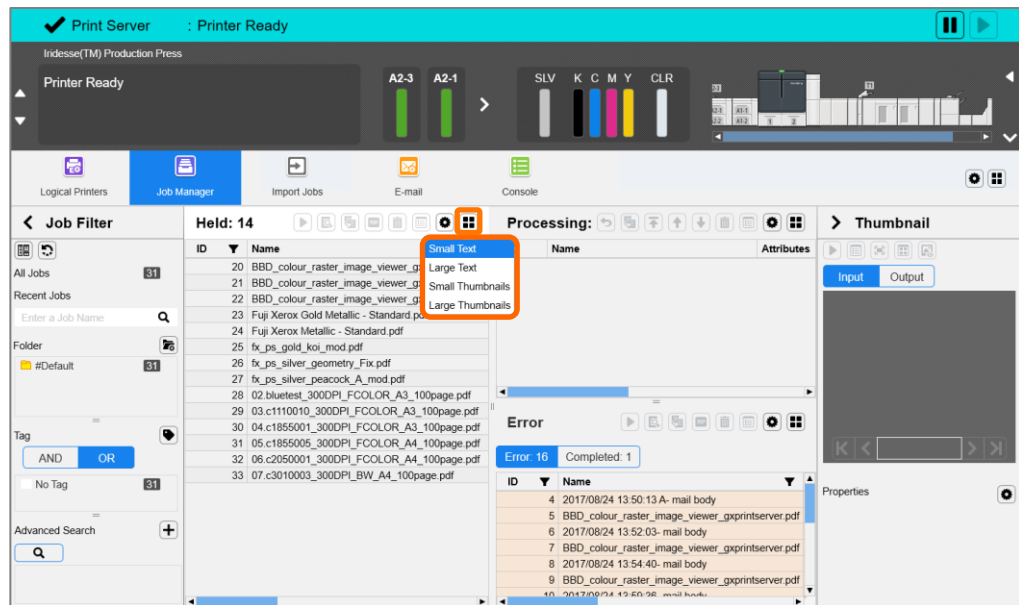
### AFTER



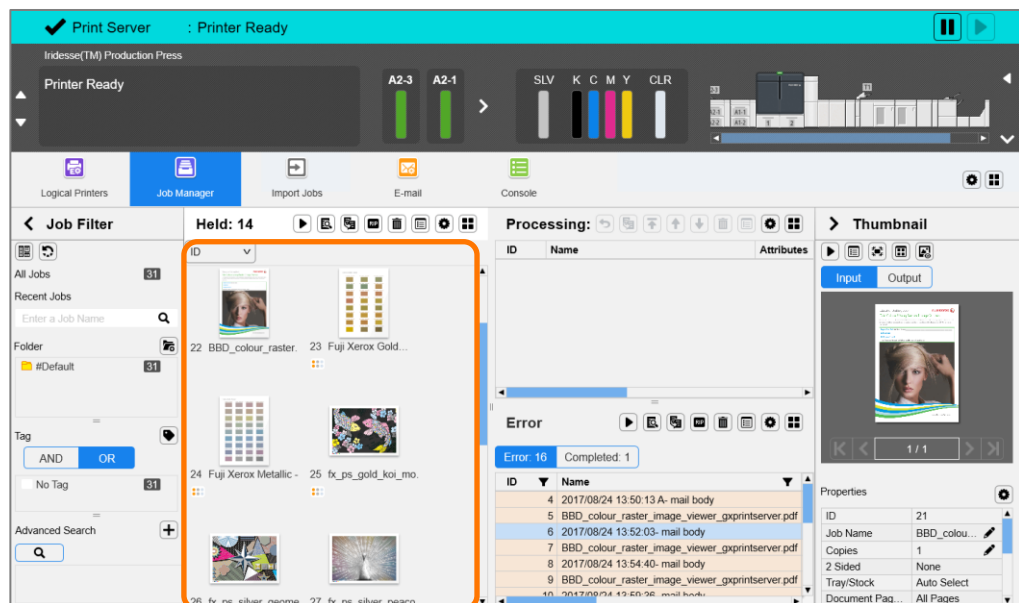
Your favourite view of Job List

# Change View of Job List

1. Select  (Change View) icon on the Held list.



2. Choose a view from [Small Text], [Large Text], [Small Thumbnails], and [Large Thumbnails].
3. The Job List view has changed as selected.





You can also configure different views for each job list. For example, it can be selected as Large Thumbnail for Hold, Small Thumbnail for Processing, and Small Text for Error, show only Error, or Completed jobs as shown below.

The screenshot displays three panels from a software interface, each with a title bar and a set of icons. The 'Held: 13' panel shows a grid of 13 large thumbnails of various documents. The 'Processing: 1' panel shows a single document thumbnail with a progress bar and a 'Print' button. The 'Error' panel shows a table of error messages.

ID	Name	Attributes	Description
8	2017/08/24 13:54:40 - mail body		Resource Referring Error (CMYK Dev)
9	BBD_colour_raster_image_viewer_gprintserver.pdf		Resource Referring Error (CMYK Dev)
10	2017/08/24 13:59:36 - mail body		Resource Referring Error (CMYK Dev)
11	BBD_colour_raster_image_viewer_gprintserver.pdf		Resource Referring Error (CMYK Dev)
12	2017/08/24 14:28:40 3- mail body		Resource Referring Error (CMYK Dev)
13	BBD_colour_raster_image_viewer_gprintserver.pdf		Resource Referring Error (CMYK Dev)
14	booklet_A_01.pdf		Resource Referring Error (CMYK Dev)
15	2017/08/24 15:21:50 4- mail body		Resource Referring Error (CMYK Dev)
16			Job Reception Error
17	2017/08/24 15:34:40 5- mail body		Resource Referring Error (CMYK Dev)
18	booklet_A_01.pdf		Resource Referring Error (CMYK Dev)

Congratulations you have now completed this exercise.