

# How to Configure the Job List Layout

## GX Print Server for Iridesse Production Press

Version 1.0



# Overview

This exercise will demonstrate the ability to configure the layout of the job list on GX Print Server "Job Manager". The user can easily change the layout of Processing and Completed job lists.

## Objective

By the end of this exercise users will be able to:

- Find the location of the setting on the GX Print Server
- Learn how to Configure the Job List Layout

### BEFORE

ID	Name	Attributes	Size	Arrived
60	booklet_A_01.pdf		23,540 KB	2017/09
61	H&P Poster_95.pdf		4,389 KB	2017/09
62	H&P Poster_97.pdf		4,389 KB	2017/09
63	H&P Poster_Corotation.pdf		4,392 KB	2017/09
64	Test_S01.pdf		192 KB	2017/09
65	Sample1-4.pdf		188,190 KB	2017/09
66	SA_View_P05DCP_X1a.pdf		53,794 KB	2017/09
68	BBO_color_tester_image_viewer.pdf		23,984 KB	2017/09
70	BBO_color_tester_image_viewer.pdf		3,664 KB	2017/09

Default layout

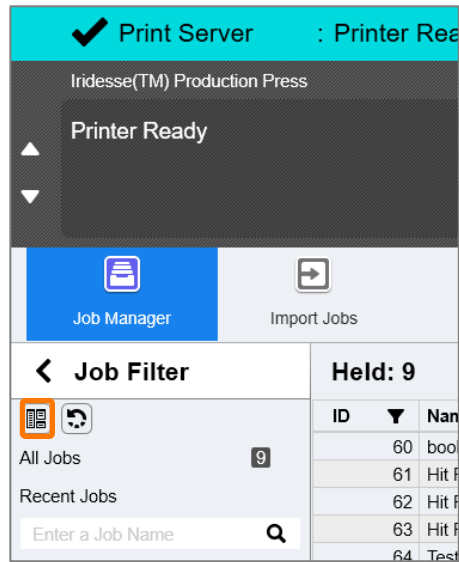
### AFTER

ID	Name	Attributes	Status	RIP Processing	Remaining RIP Time	Print	Remaining Printing
27	tk_gs_silver_gescock_A_mod.pdf						
28	02_blueprint_300DPI_FCOLOR_A3_100page.pdf						
29	03_c1110310_300DPI_FCOLOR_A3_100page.pdf						
30	04_c1855001_300DPI_FCOLOR_A3_100page.pdf						
31	05_c1855005_300DPI_FCOLOR_A4_100page.pdf						
32	06_c2255001_300DPI_FCOLOR_A4_100page.pdf						

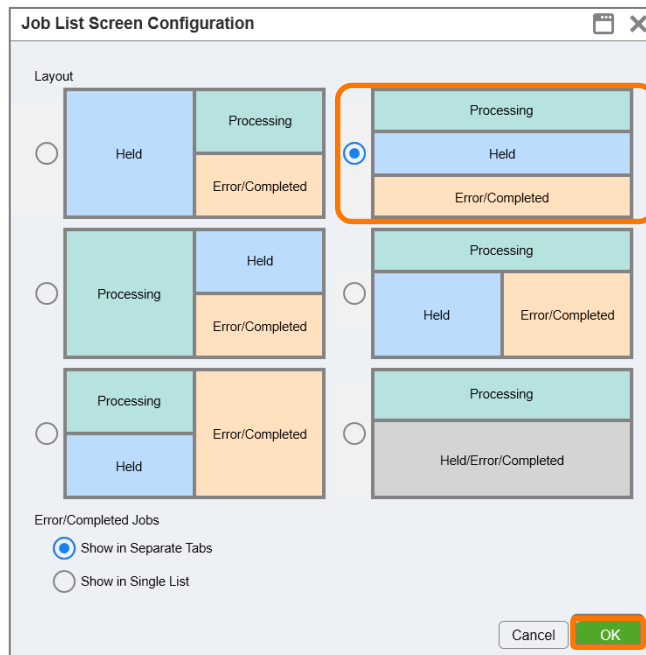
Your favourite layout

# Change Layout of Job List

1. Select  (**Job List Screen Configuration**) icon.



2. Select the Job List Layout that you want to change, and then click **[OK]**.



3. The Job List Layout has changed as selected.

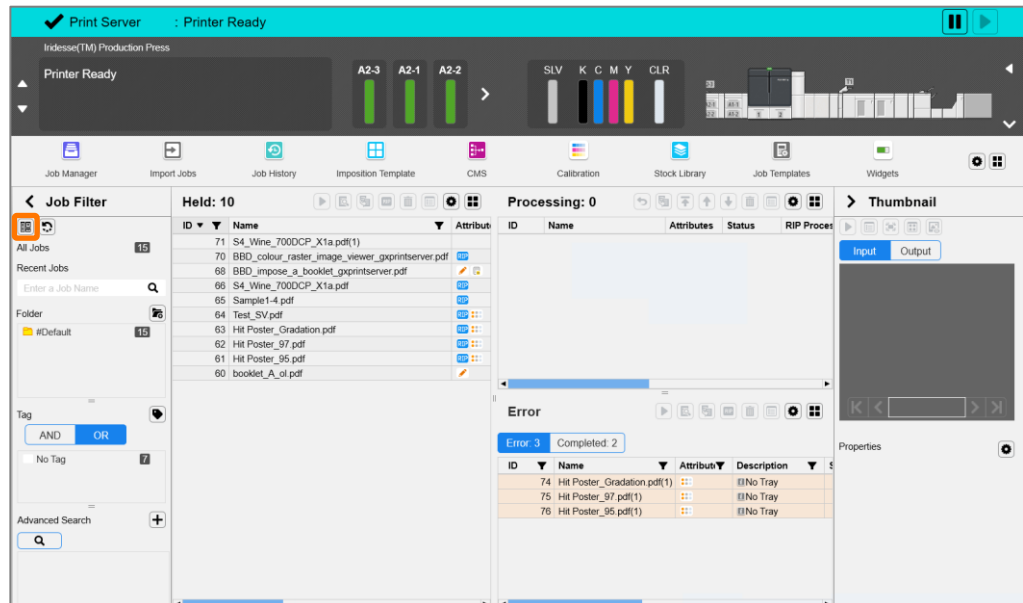


Congratulations you have now changed the Job List Layout.

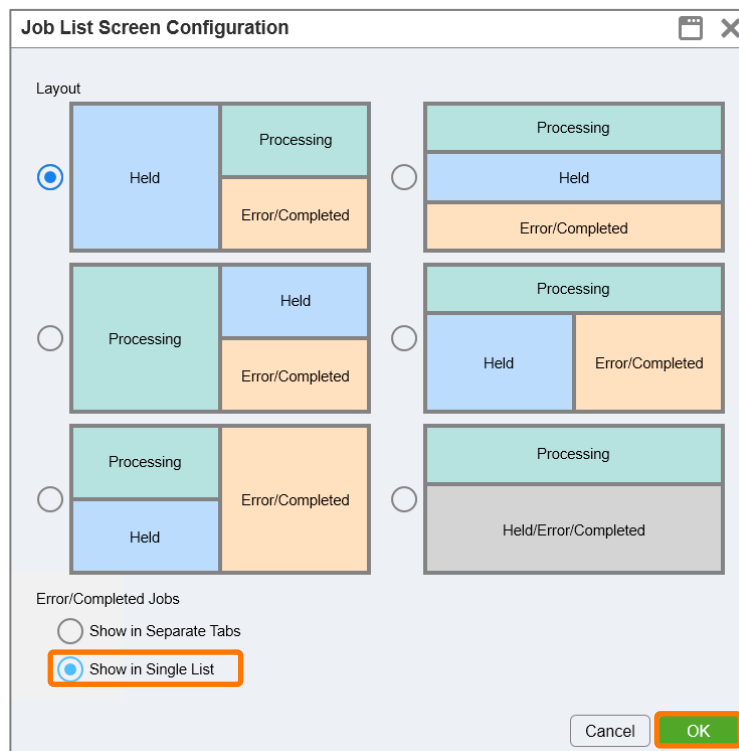
Please continue to the next exercise, to configure the Error/Completed Jobs layout.

# Configuration of Error/Completed Job List

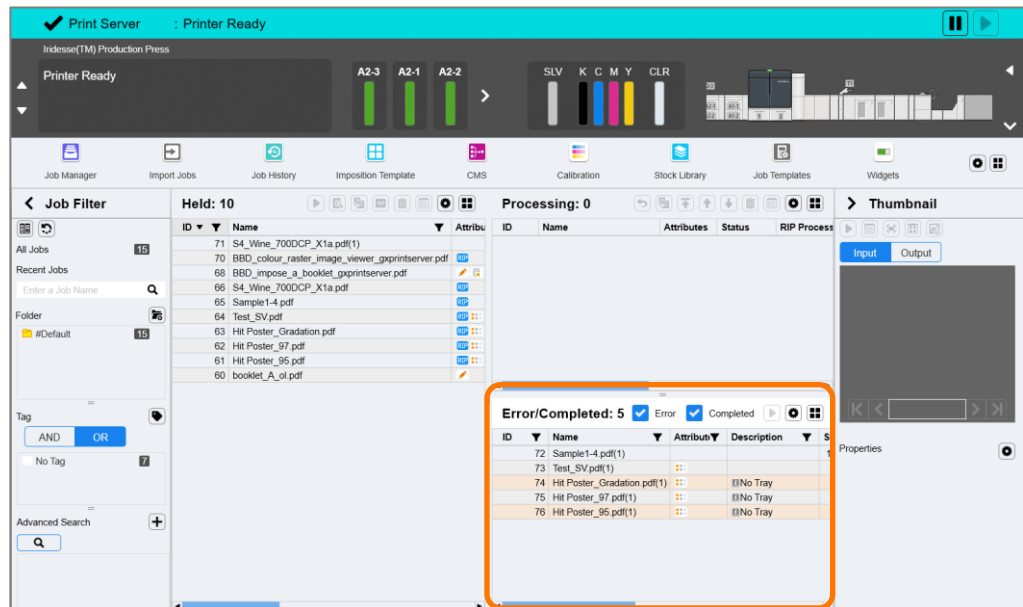
1. Select  (Job List Screen Configuration) icon.



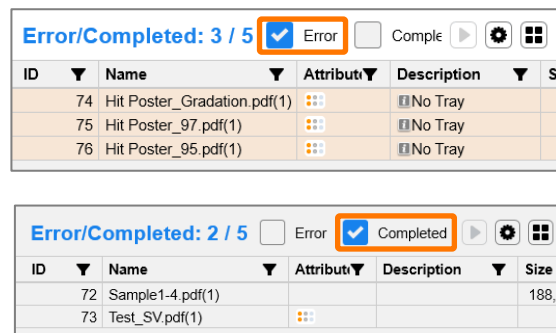
2. Select [Show in Single List] in [Error/Completed Jobs], and click [OK].



- Error and completed jobs are displayed in the same list. In the case of this configuration, errored jobs are colored light orange.



By checking the [Error] or [Completed] check box on the Error/Completed List menu, you can configure the list to show only Error or Completed jobs.



Congratulations you have now completed this exercise.