



How to Print, RIP&Hold and Cancel

GX Print Server for Iridesse Production Press

Version 1.0

Overview

This exercise will demonstrate the ability to easily control jobs using the GX Print Server “Job Manager”. The user has the ability to quickly release a job to print. Also Process and hold a job before printing it so that tools such as the Raster Image Viewer can be used. And quickly cancel a job while it is printing so that last minute changes can be applied.

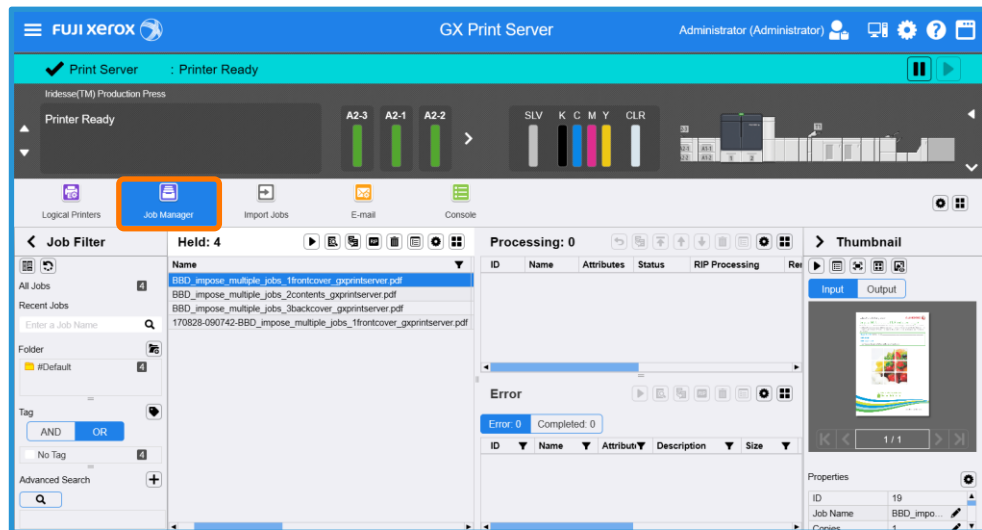
Objective

By the end of this exercise users will be able to:

- Navigate to the location of the feature on the GX Print Server
- Release a job to Print using the GX Print Server “Job Manager”
- Rip and Hold a job using the GX Print Server “Job Manager”
- Cancel a print job using the GX Print Server “Job Manager”

Print










1. Select **[Job Manager]**.



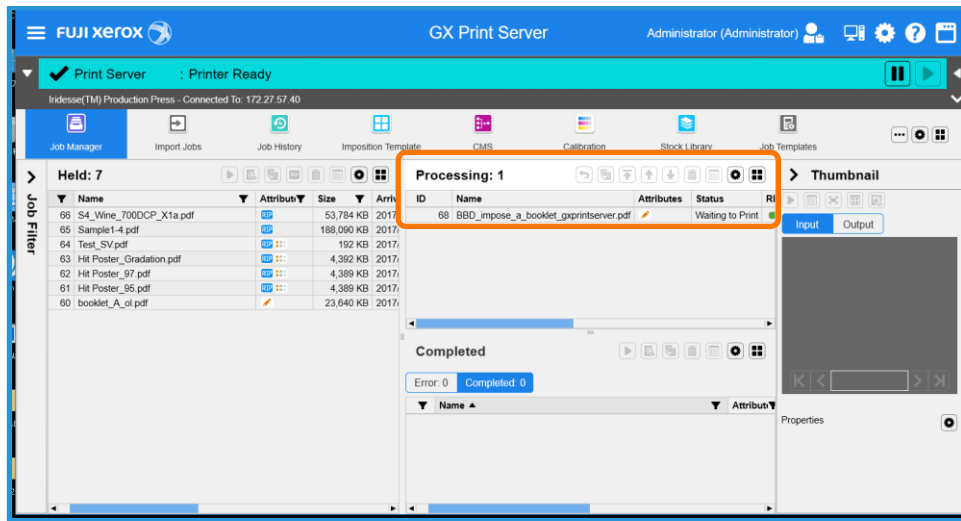
2. Select the job to print.



3. Click  (Print).

Held: 8					
       					
▼	Name	▼	Attribut	▼	Size
68	BBD_impose_a_booklet_gxprintserver.pdf				23,984 KB
66	S4_Wine_700DCP_X1a.pdf		RIP		53,784 KB
65	Sample1-4.pdf		RIP		188,090 KB
64	Test SV.pdf		RIP		192 KB

- The job is moved to Processing List and printed.

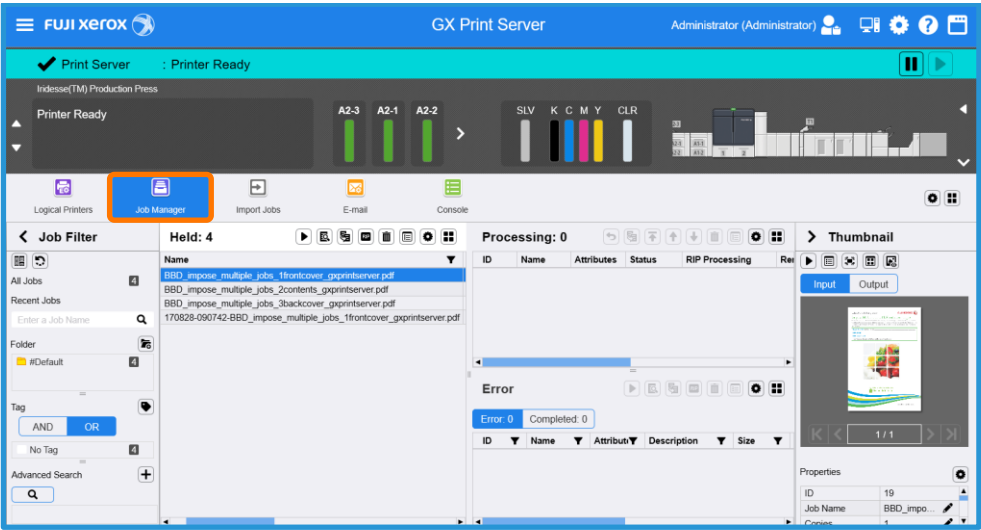


You have now completed this exercise.

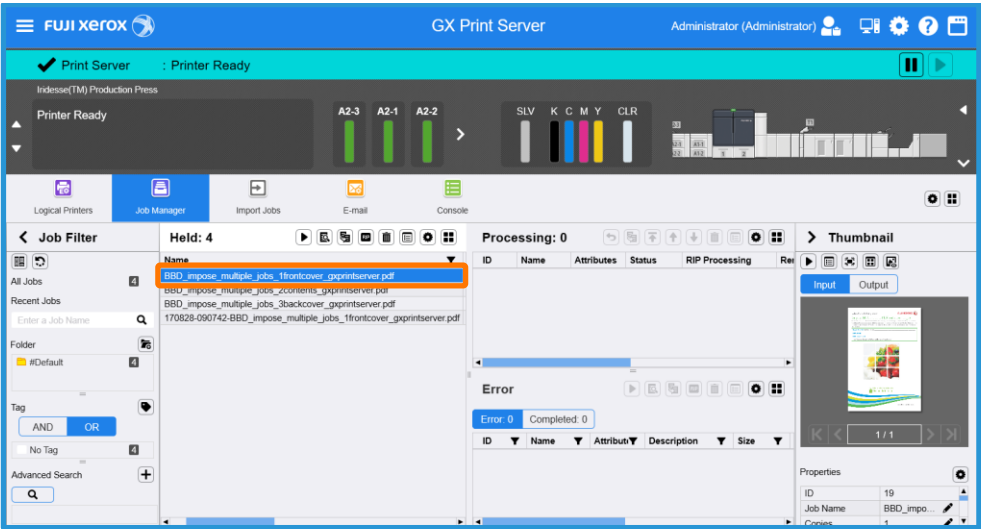
To practice the process of RIP and Hold please continue to the next exercise.

RIP and Hold






1. Select [Job Manager].



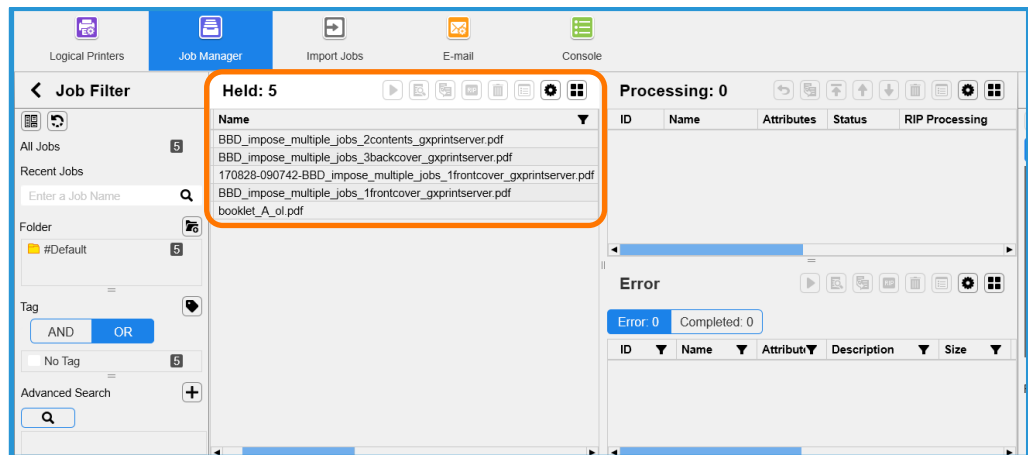
2. Select the job to RIP and Hold.



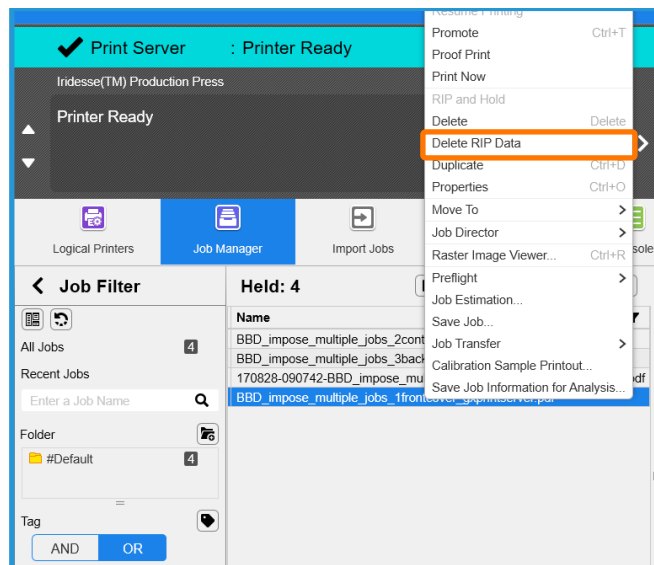
3. Click  (RIP and Hold).

Held: 8					
       					
▼	Name	▼	Attribut	Size	▼
68	BBD_impose_a_booklet_gxprintserver.pdf			23,984 KB	2017/
66	S4_Wine_700DCP_X1a.pdf		RIP	53,784 KB	2017/
65	Sample1-4.pdf		RIP	188,090 KB	2017/
64	Test SV.pdf		RIP	192 KB	2017/

- The job is moved to Processing List and processed. After processing, the job is returned to Held List with RIP Data icon.



To Delete RIP Data, please select [Delete RIP Data] in Right-click menu.

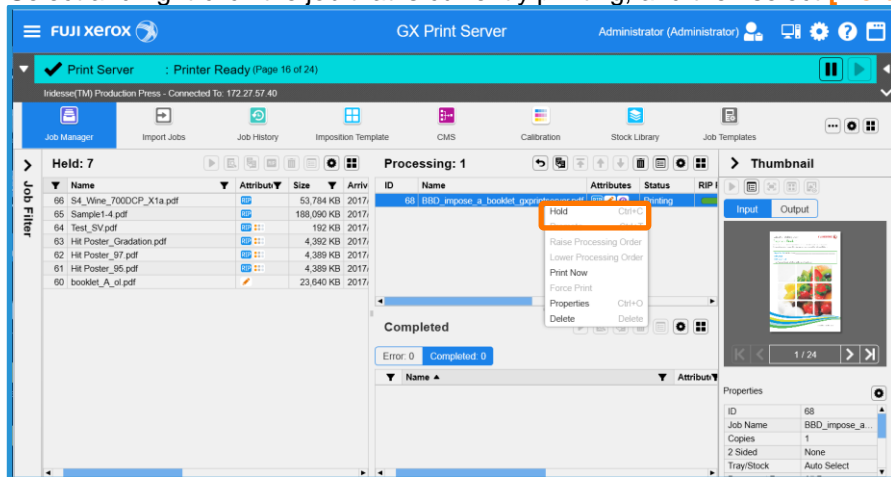


You have now completed this exercise.

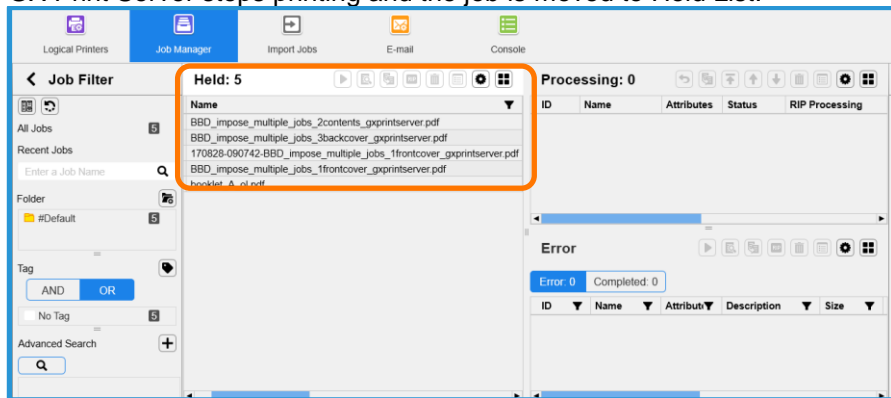
To practice the process of Cancelling a Print Job please continue to the next exercise.

Cancel the print job

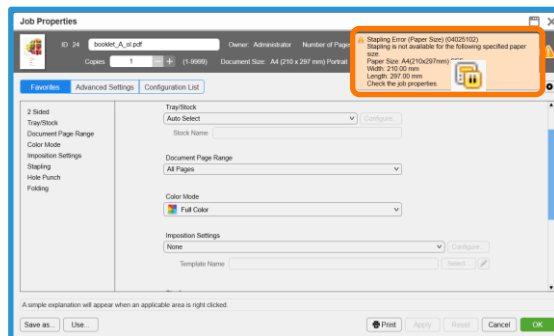
1. Select and right-click the job that is currently printing, and then select **[Hold]**.



2. GX Print Server stops printing and the job is moved to Held List.



When the job is canceled or halted by error, the icon is displayed. The number of printed copies and pages are displayed in the Job Properties.



Congratulations you have now completed this exercise.