



How To Adjust Fine Lines

GX Print Server for
PrimeLink™

Version 1.0

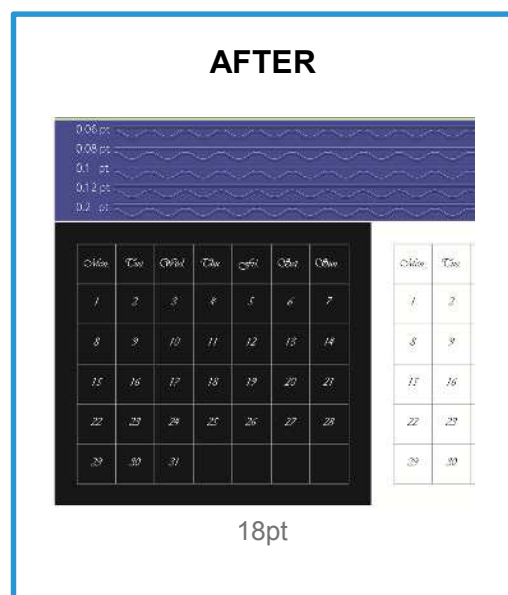
Overview

This exercise will demonstrate the ability to adjust the default “Minimum Line Width” of fine lines on a printed output. This feature can greatly improve the thickness of fine line detail.

Objective

By the end of this exercise users will be able to:

- Navigate to the location of the setting on the GX Print Server
- Make an adjustment to the default value
- Compare the results

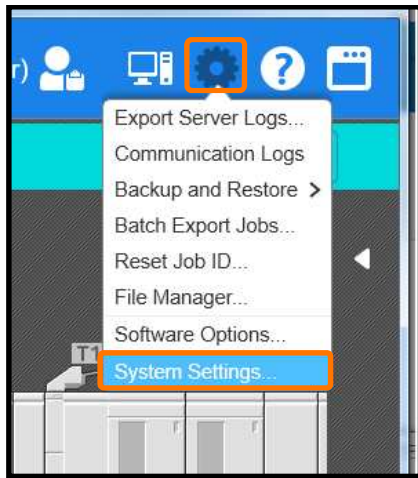


Adjust Fine Lines

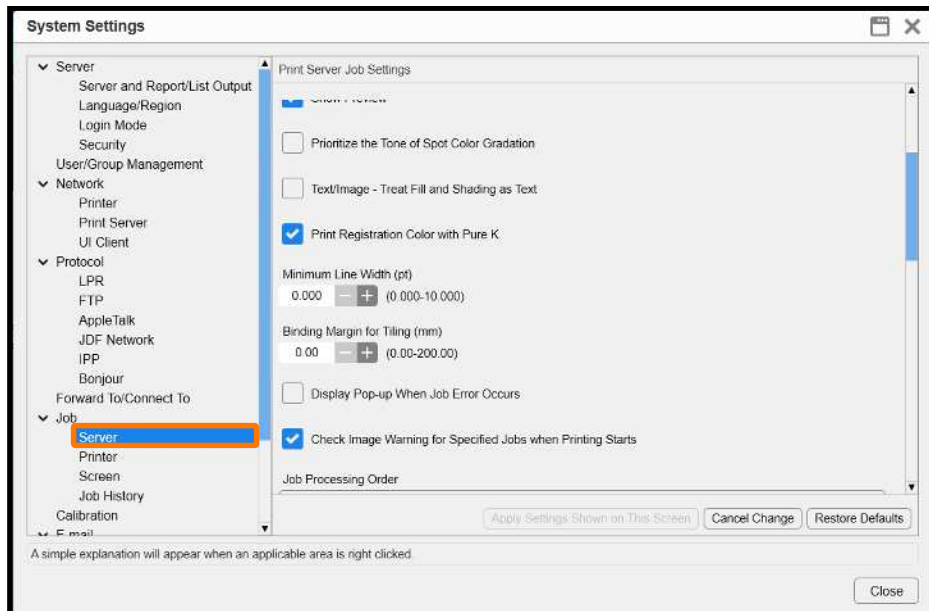


Print a sample file with the default setting before making the following adjustment.

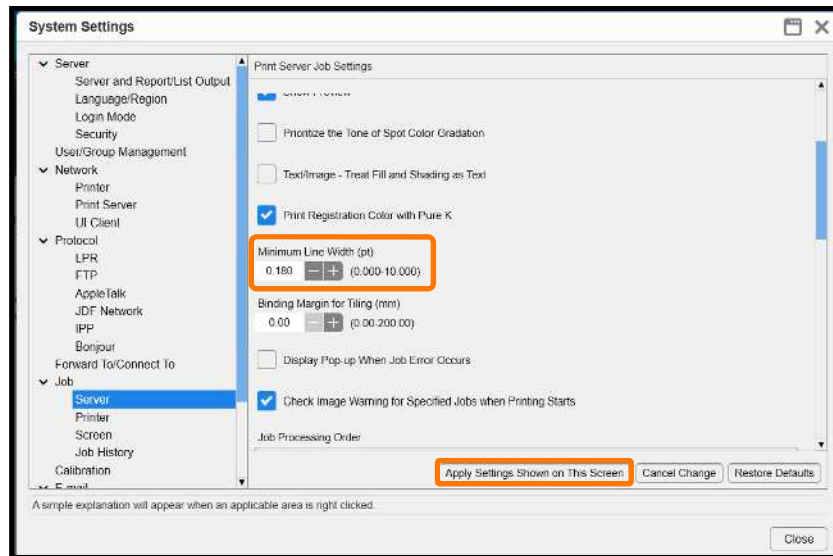
1. Log in as Administrator.
Note: Contact your device administrator for the login details. If the login details have been misplaced, contact customer support via Live Chat.
2. Select **[Settings]** > **[System Settings]**.



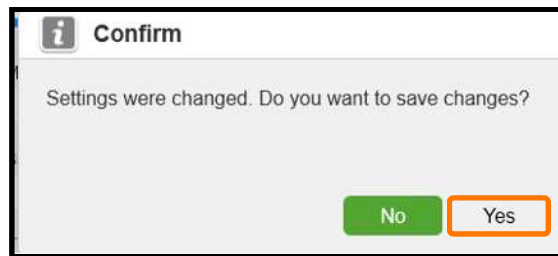
3. Select **[Server]** in [Job Settings].



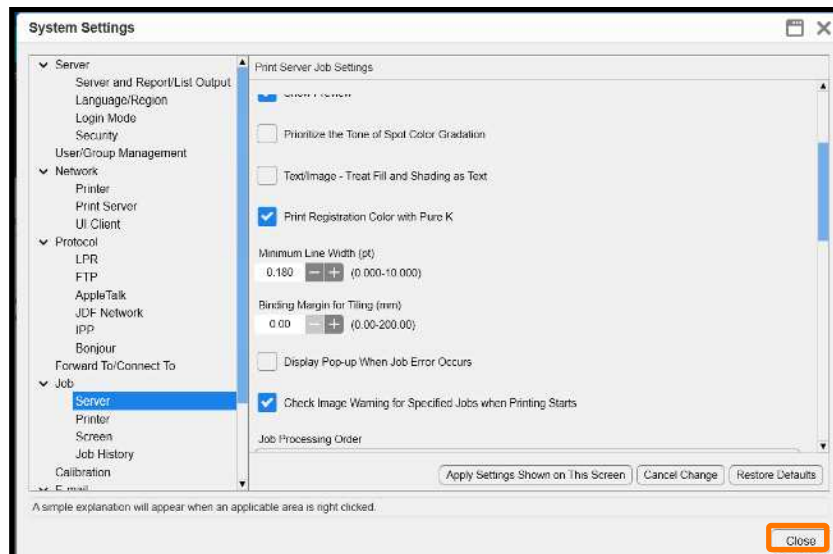
4. Change the value of **[Minimum line Width]** (Eg. 0.180 pt) and click **[Apply Settings Shown on This Screen]**.



5. Click **[Yes]** to save changes.



6. Click **[Close]**.



Print a sample file with your new settings to compare to the defaults.

Adjust Fine Lines for Each Job – Job Properties

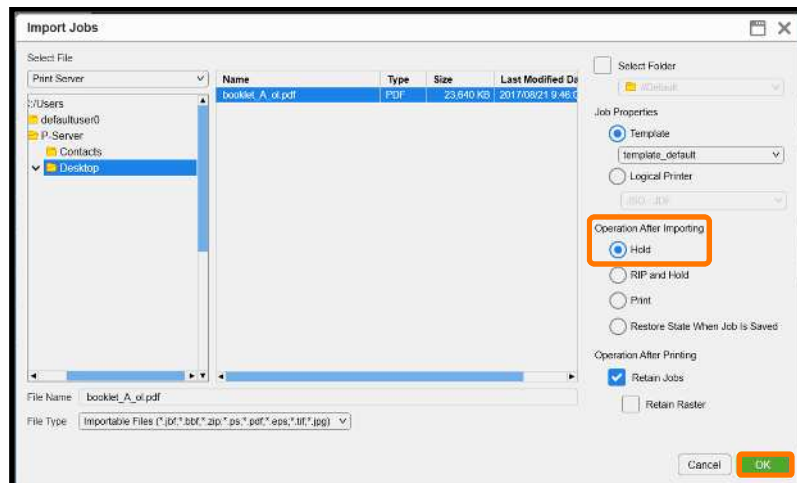


Print a sample file with the default setting before making the following adjustment.

1. In the shortcut area, select **[Import Jobs]**.

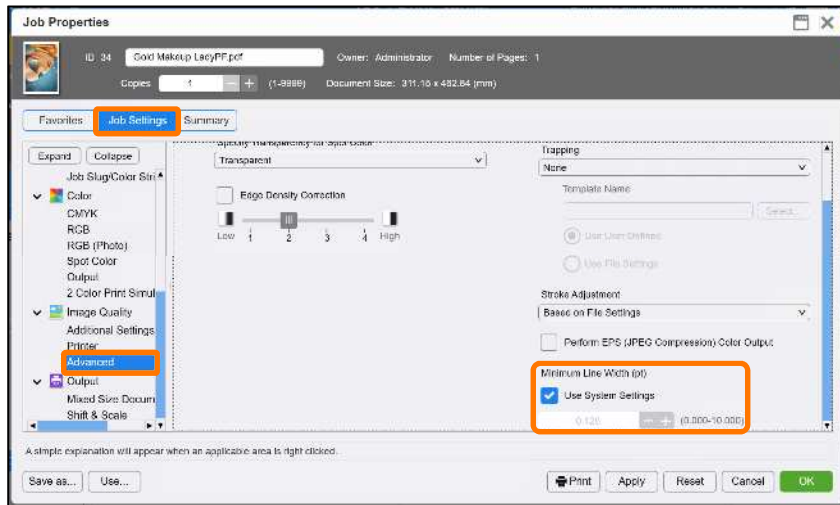


2. Select a sample job to import
3. Select **[Hold]** in [Operation After Importing] and then click **[OK]**.



4. Double-click the imported job to display the job properties.

5. Select **[Job Settings]** > **[Minimum Line Width (pt)]**.



6. Click **[Apply]** to apply the settings, and click **[Print]** to print.



Print a sample file with your new settings to compare to the defaults.

Congratulations you have now completed this exercise.