

# How To Install a Printer Driver on a Mac Computer

GX Print Server for  
PrimeLink™

Version 1.0

# Overview

This exercise will demonstrate the process of downloading, installing and printing using a GX Print Server “PDF Printer Driver” on a Mac computer (for Mac OS 10.9 or later).

## Objective

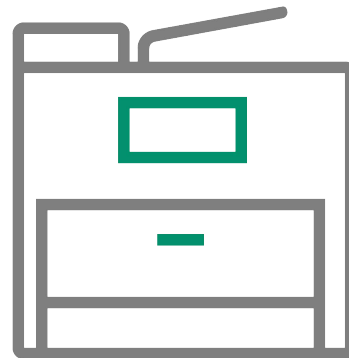
- Download the printer driver from Web Manager
- Install the printer driver
- Print from an application

### BEFORE



Mac OSX application

### AFTER



Printing from Mac OSX

# Download and Install Printer Driver (for Mac OS 10.9 or later)



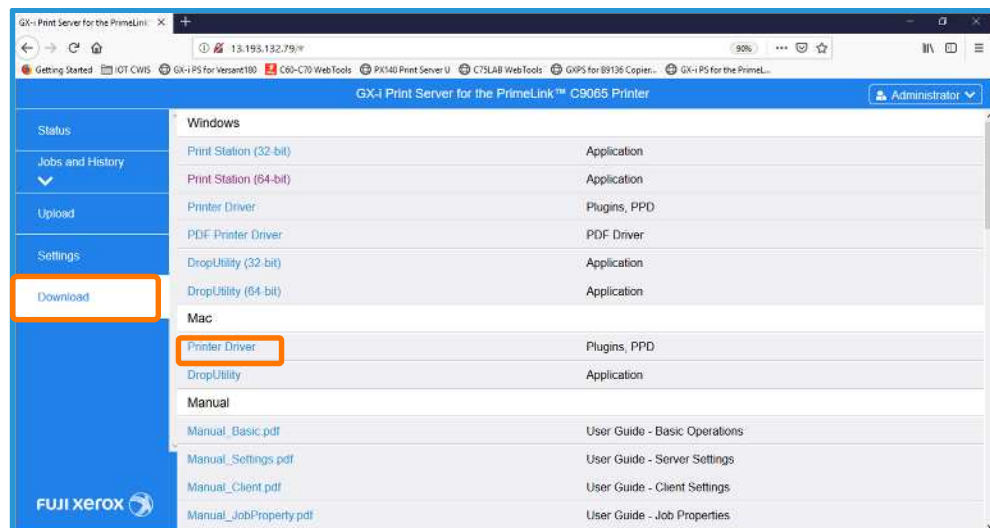
This demonstration requires the IP Address of the GX Print Server. To learn how to find the IP address of the GX Print Server please refer to: The GX Print Server User Guide accessed by the “Help menu” on the Print Station – “Chapter 4 System Settings”.

1. Access GX Print Server webpage by entering the IP address on the web browser address bar from the client computer.



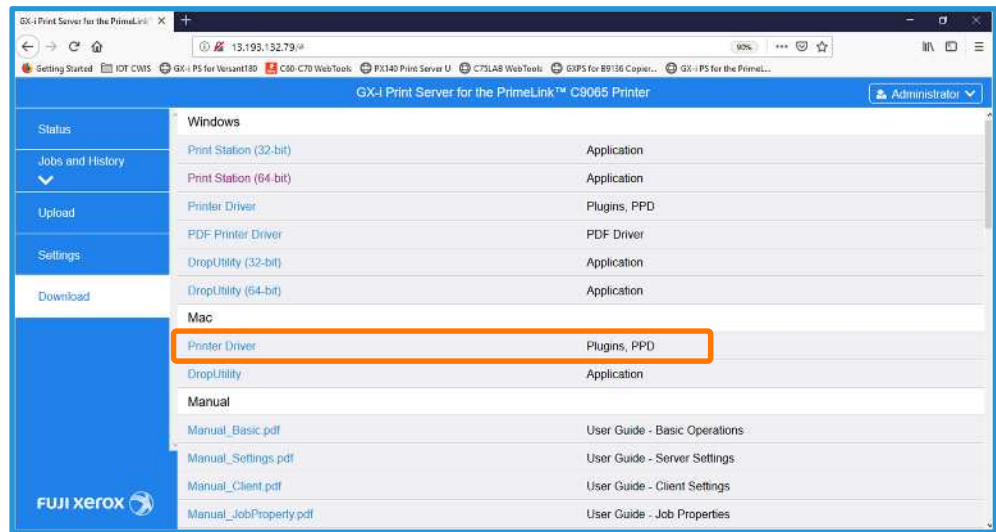
For the Mac OS the PostScript printer driver is the default and only download option.

2. Select **[Download]** and **[Mac]**.



Please note, in the next step we will use the example of connecting to a GX Print Server for PrimeLink™. If you are following this installation for another device your download (.dmg) name will be different.

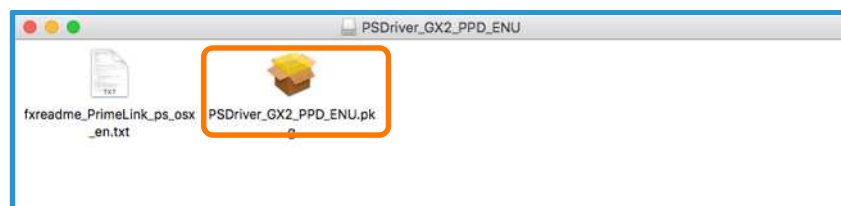
- Click the link **[Printer Driver]** and download the printer driver.



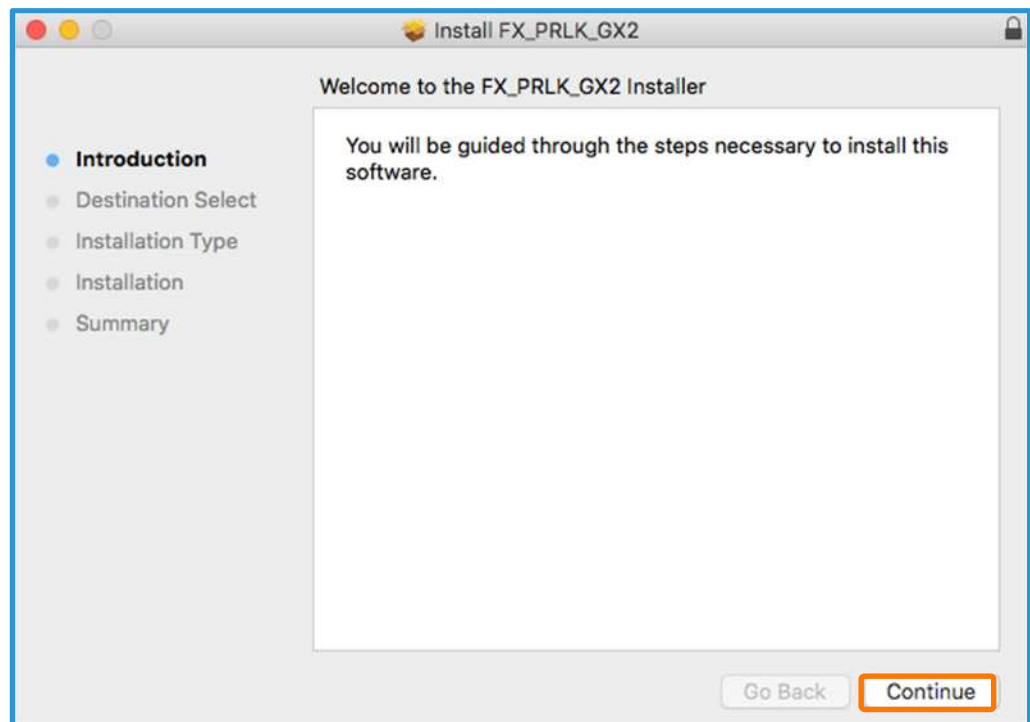
- Double-click the downloaded file.



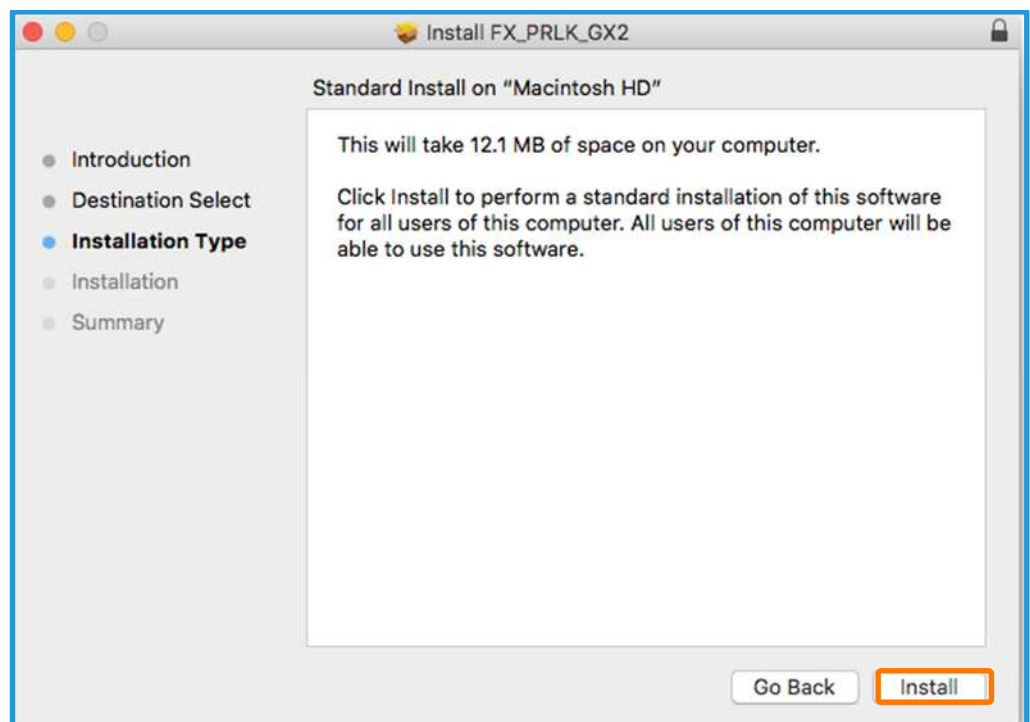
- Double-click "**PSDriver\_GX2\_PPD\_ENU.pkg**" in the "Iridesse\_GX2\_PPD\_ENU" folder.



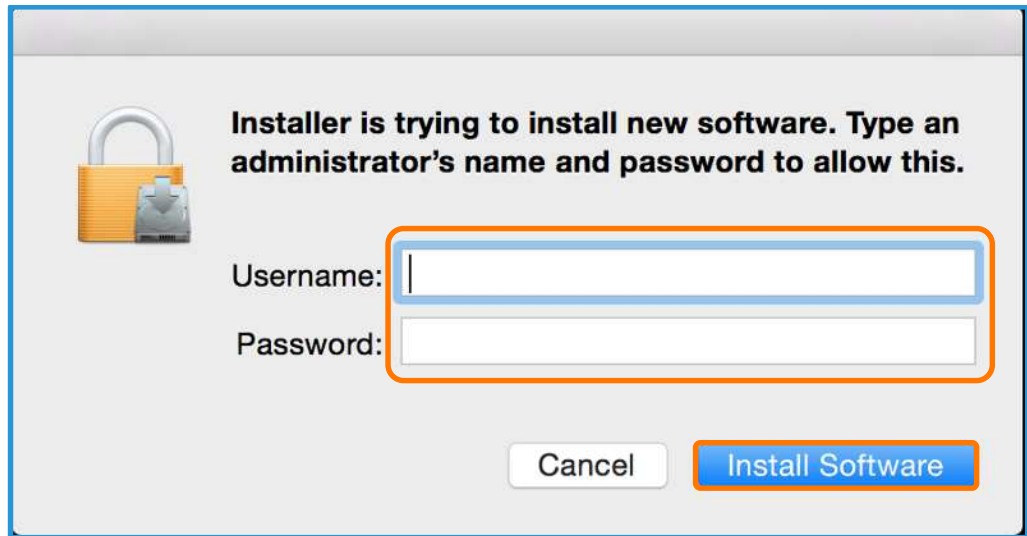
6. Click **[Continue]**.



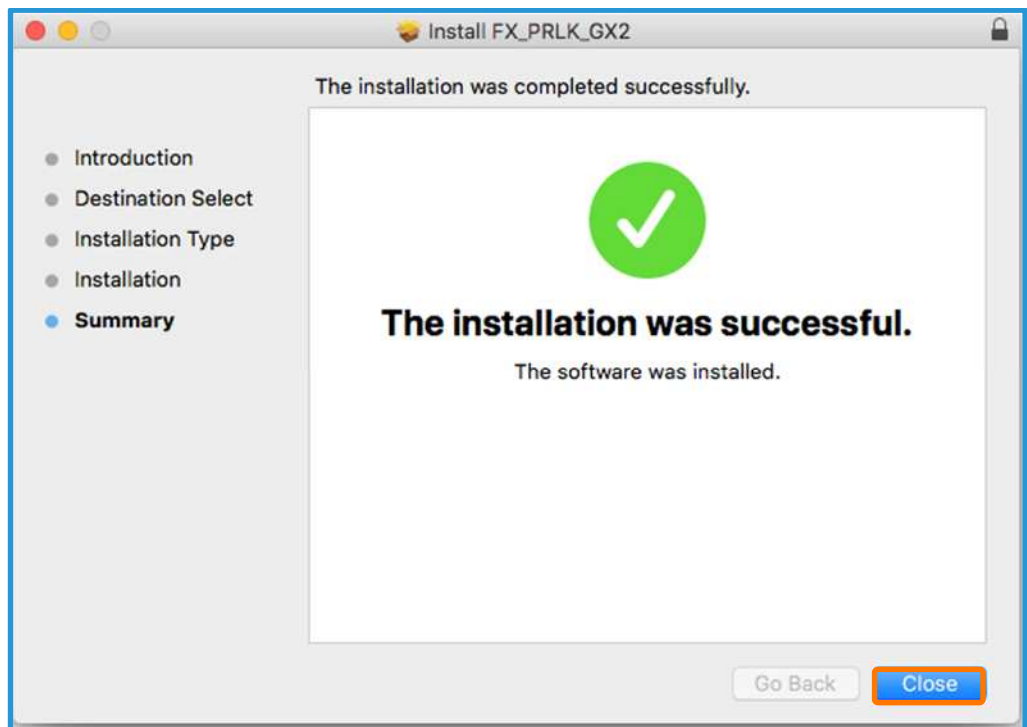
7. Click **[Install]**.



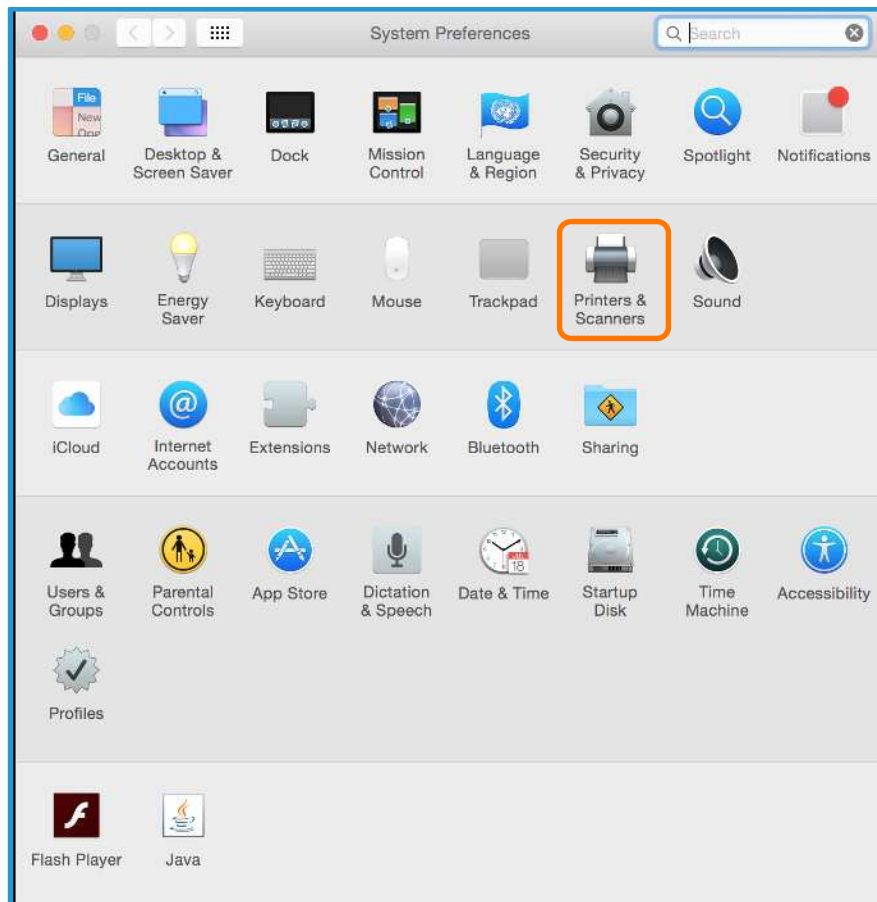
8. Input the Mac OS Admin **Username** and **Password** to install new software and click **[Install Software]**.



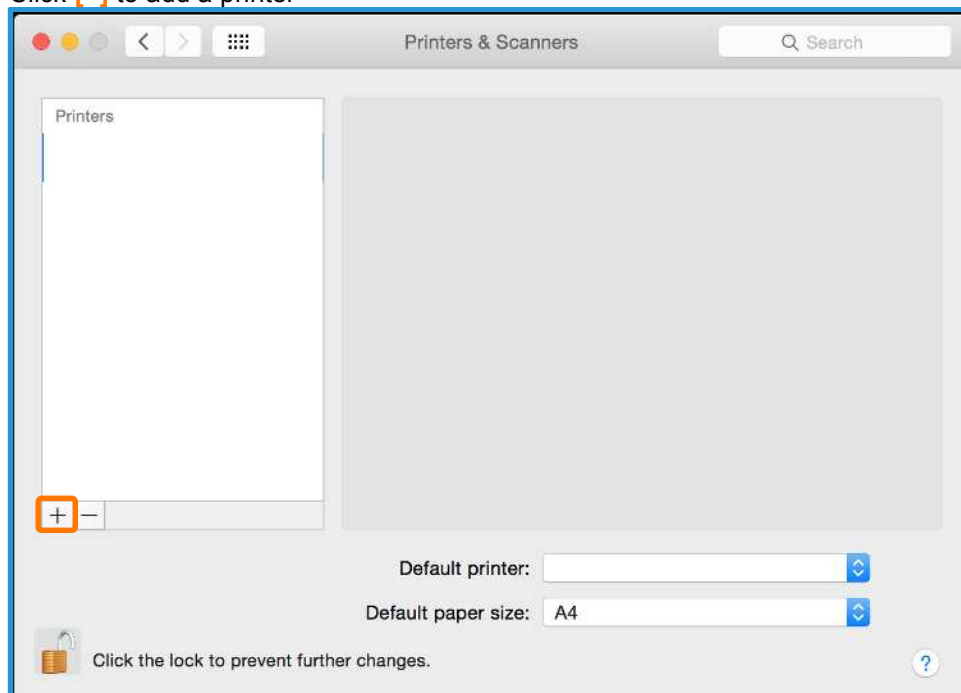
9. When completed the following message appears, click **[Close]**.



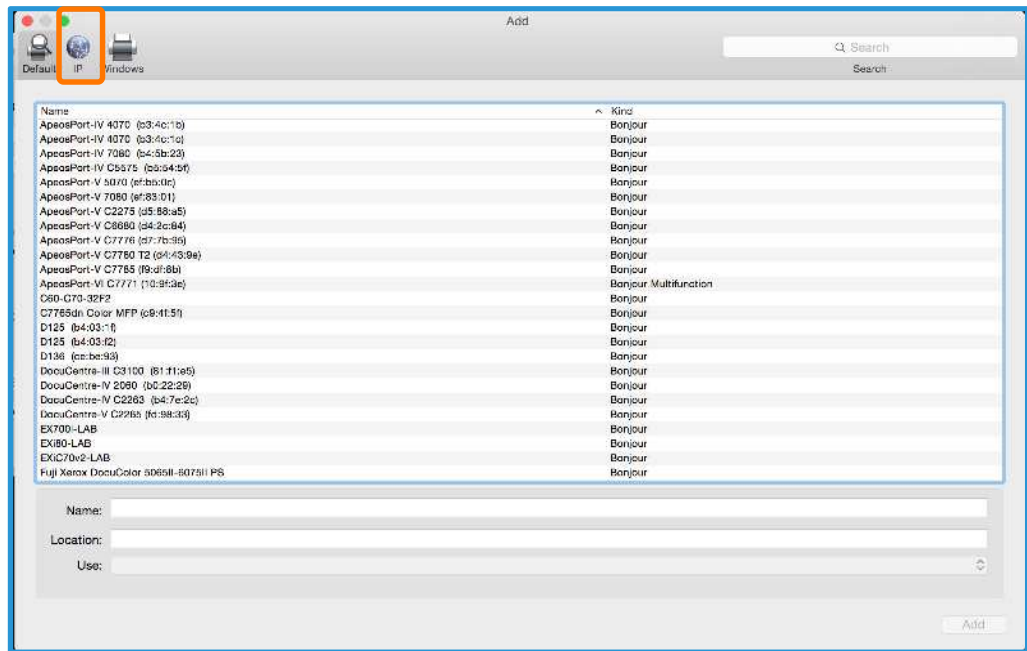
10. Open the Mac OS [System Preferences] window and click **[Printers & Scanners]**.



11. Click **[+]** to add a printer



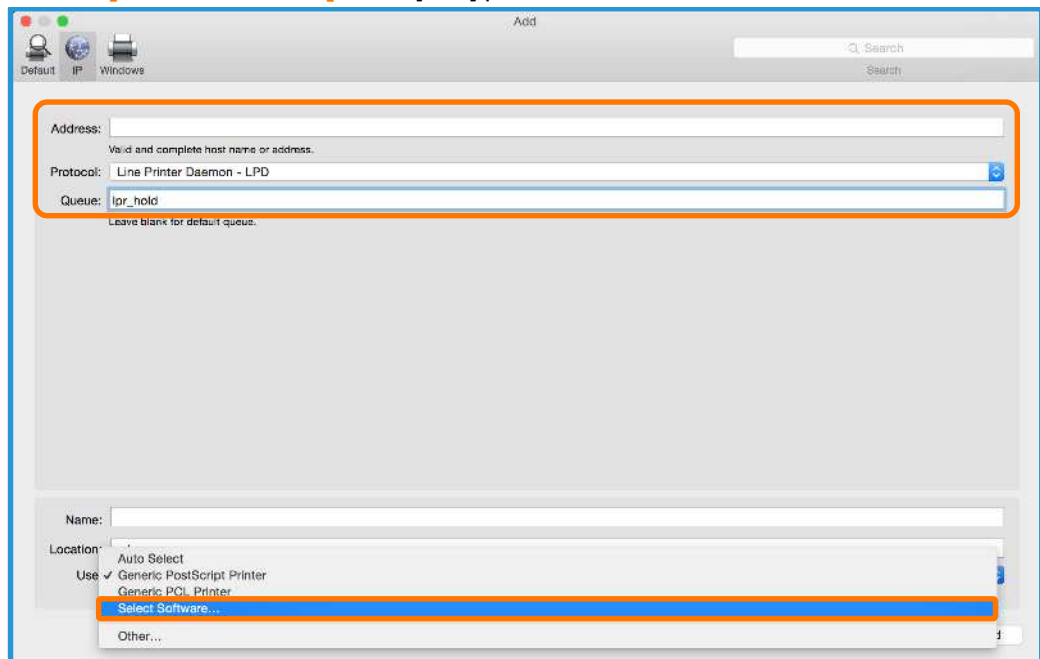
12. Click **[IP]** to create an LRP printer setup.



13. Check that **[Line Printer Daemon - LPD]** is selected in [Protocol]

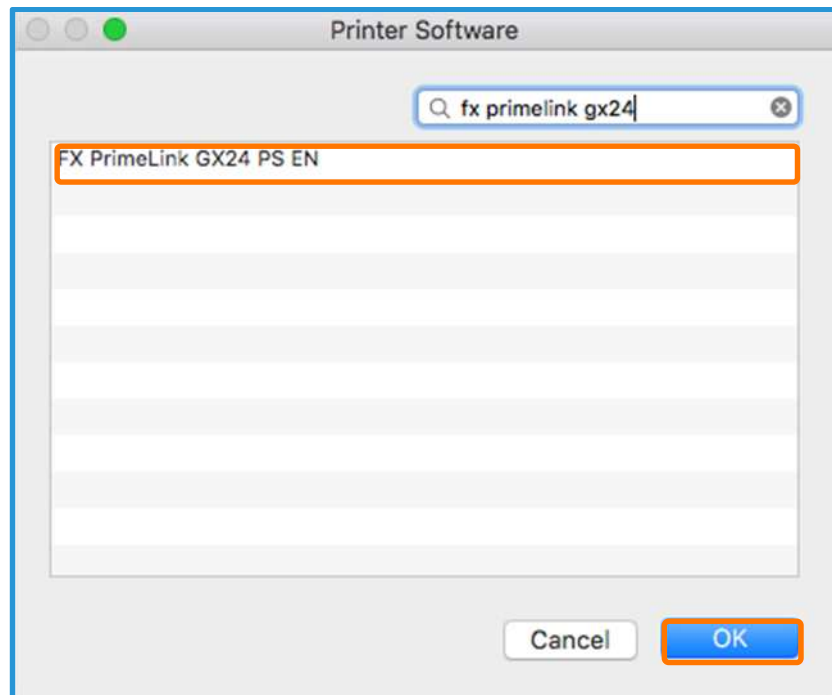
- Enter the IP address of Print Server in **[Address]**.
- Enter the TCP/IP logical printer of Print Server in **[Queue]** (i.e "lpr\_print" is a default system defined queue. A user defined queue may also be chosen at this step).
- Enter also [Name] and [Location] if necessary.

Choose **[Select Software]** in the [Use] pull-down menu.

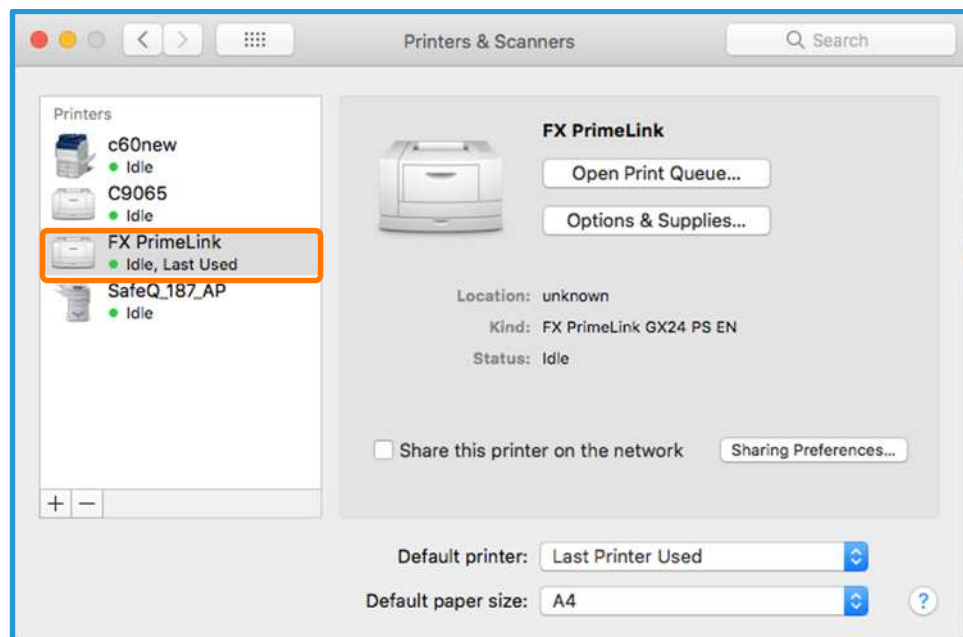




14. Select **[FX PrimeLink GX24 PS EN]** from [Printer Software] and then click **[OK]**.

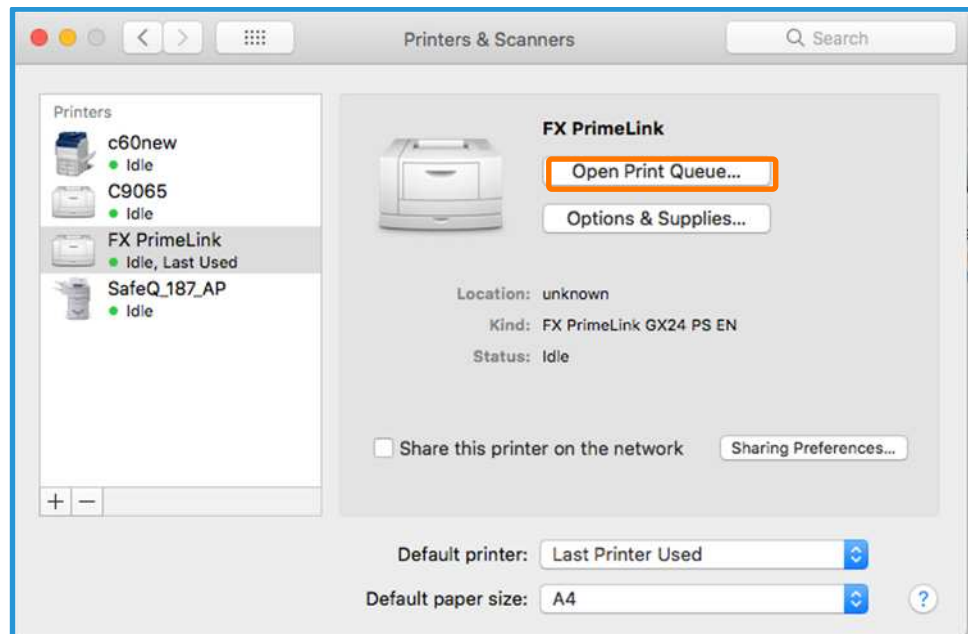


15. Then **click [ADD]** The printer is created.

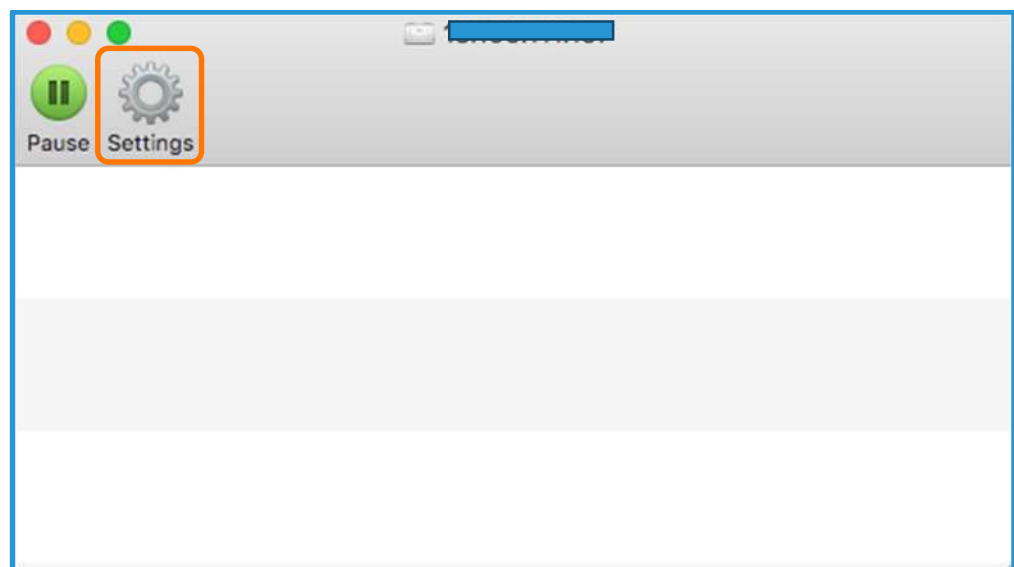


Congratulations, now the printer is added. The following steps explain how to get information such as Imposition Templates, Colour Profiles etc. from the GX Print Server.

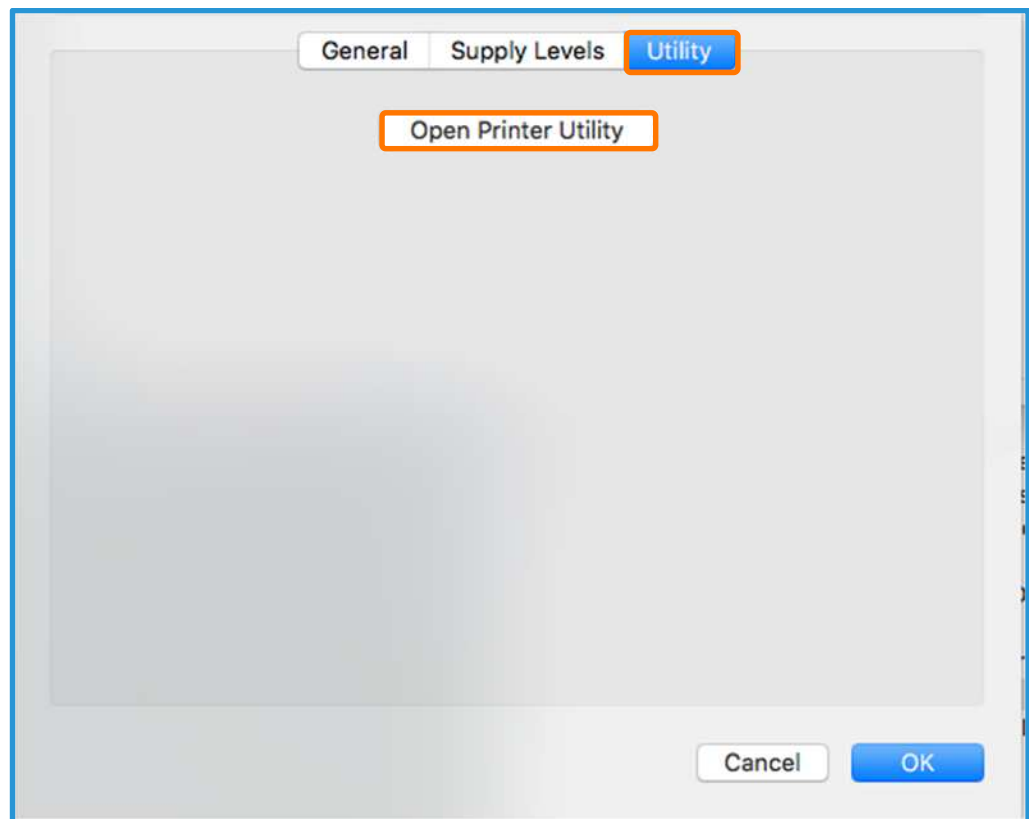
16. Click **[Open Print Queue]**.



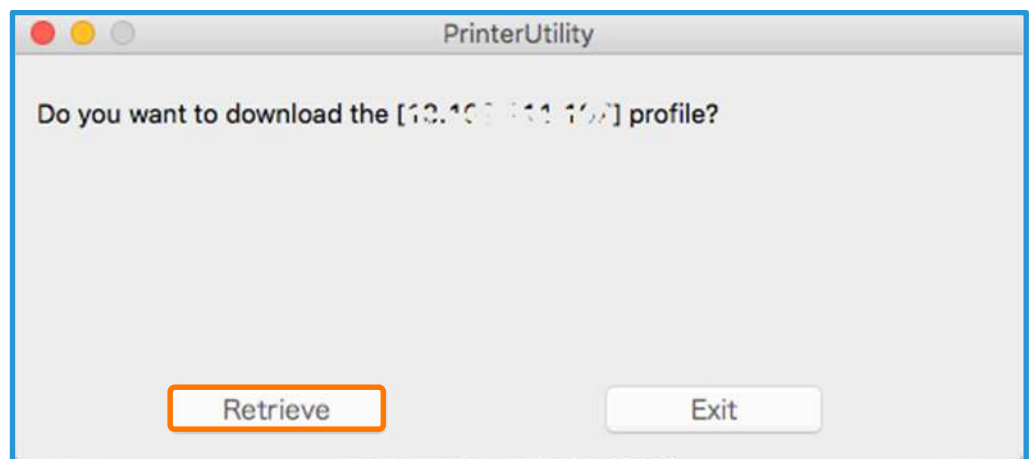
17. Click **[Settings]**



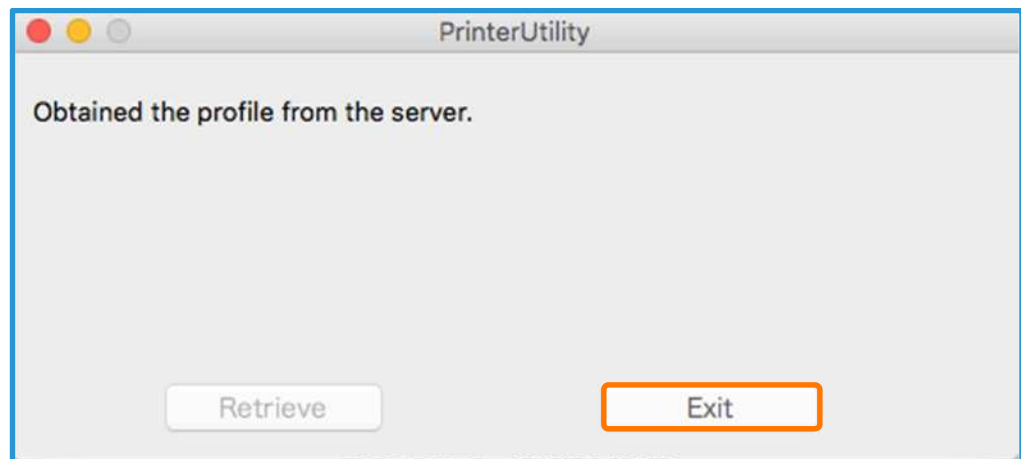
18. Select **[Utility]** and **[Open Printer Utility]**.



19. Click **[Retrieve]**.



20. Click **[Exit]**.

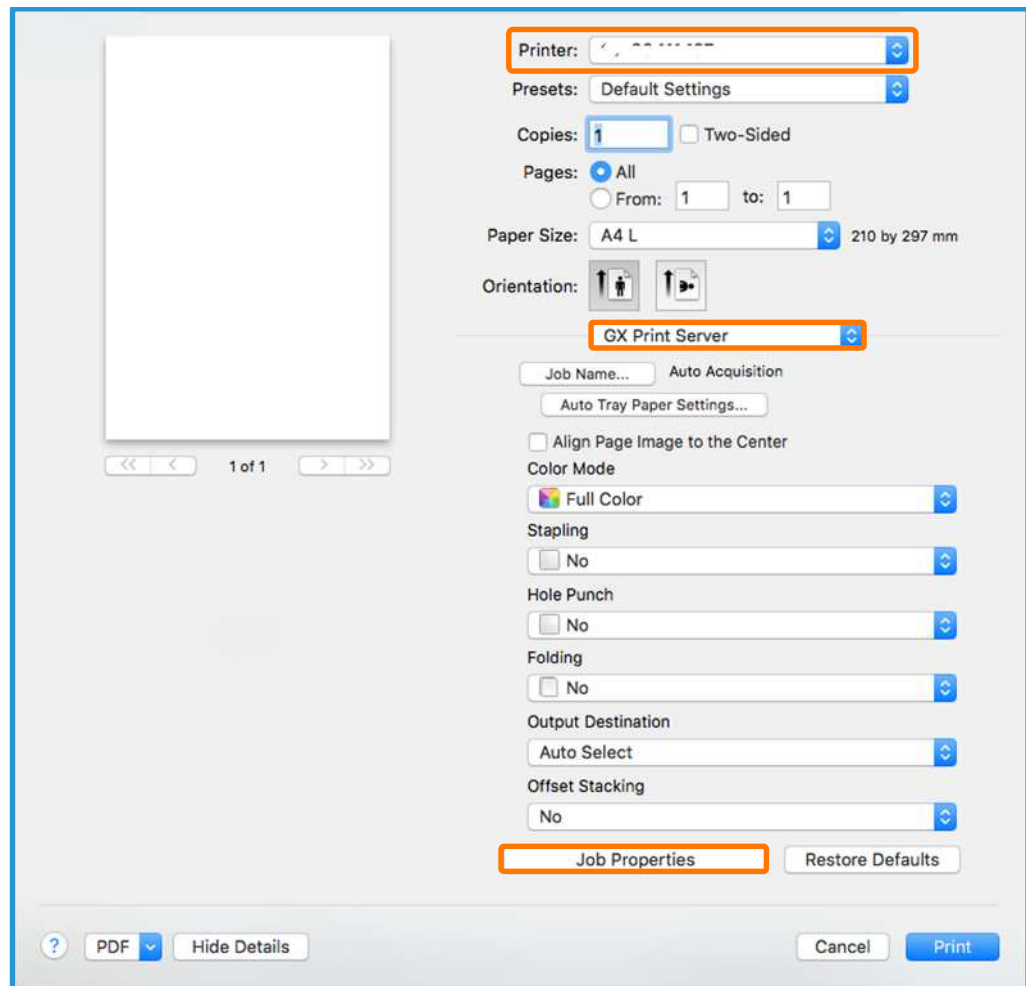


Congratulations, you have now completed the installation process of a GX Print Server Printer Driver.

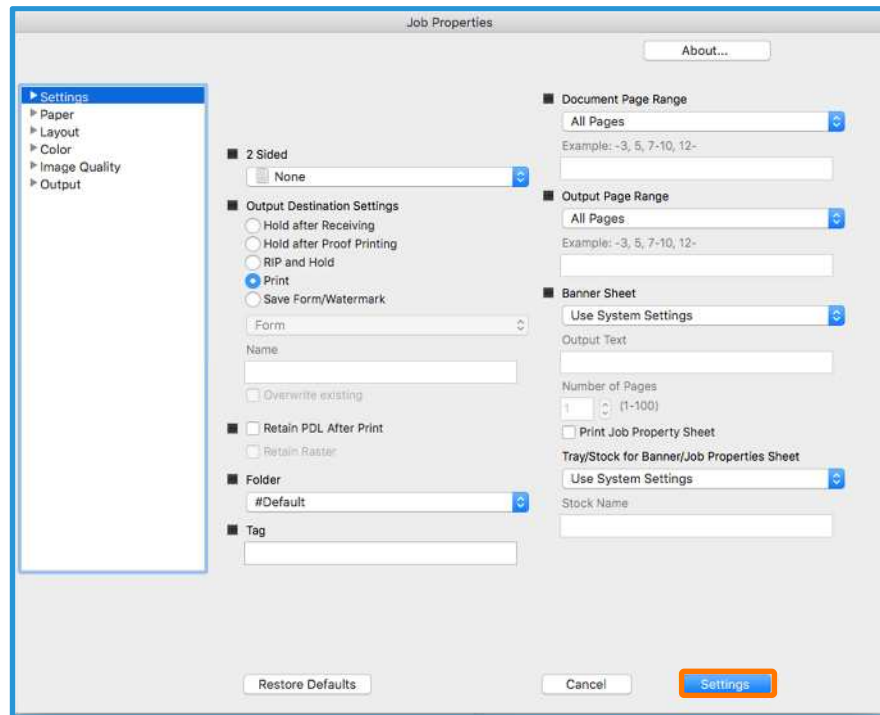
Please continue to the next steps in this exercise. We will test the success of the install, by choosing a file and an application to print from.

# Print from the Macintosh Client

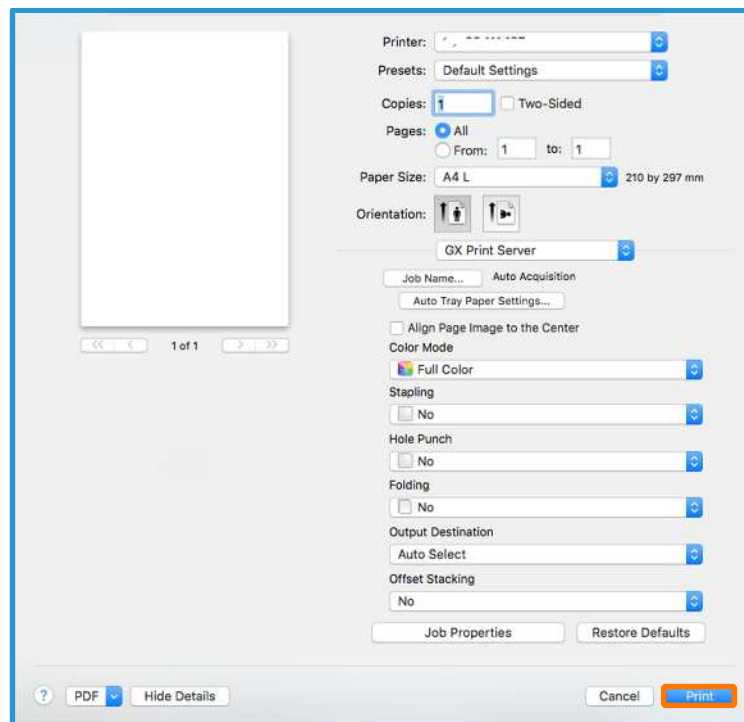
1. Select [File] >> **[Print]** from the application.
2. Select the printer driver created in the previous exercise from [Printer], and select **[GX Print Server]**.  
If required, setup job properties, click **[Job Properties]**.



- After setting the required job properties, click **[Settings]**.



- Click **[Print]** in the [Print] dialog box.



Congratulations you have now completed this exercise.