



# How To Login as an Administrator

GX Print Server for  
PrimeLink™

Version 1.0

# Overview

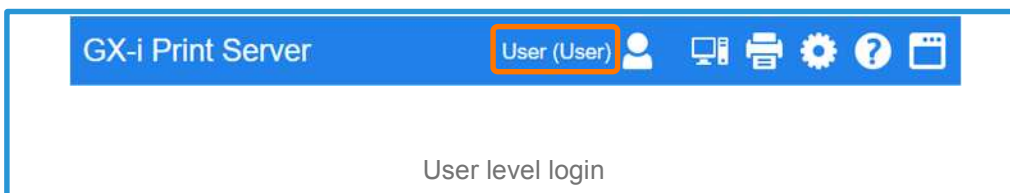
This exercise will demonstrate the ability to login to the GX Print Server as a System Administrator. This login method will grant the operator access to more advanced system level preferences.

# Objectives

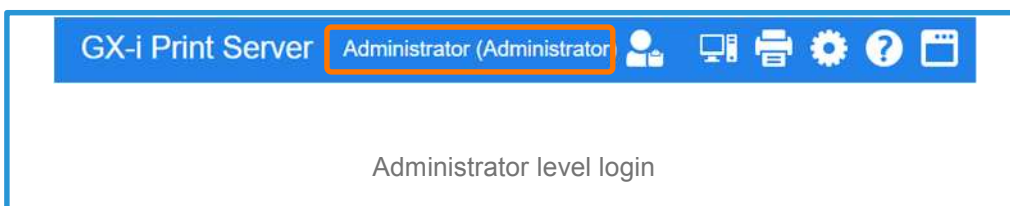
By the end of this exercise you will be able to:

- Identify the status of the current user logged into the GX Print Server
- Navigate to the location of the Log in / Log out setting on the GX Print Server
- Identify the Default Administrator Password
- Log in as an Administrator

## BEFORE

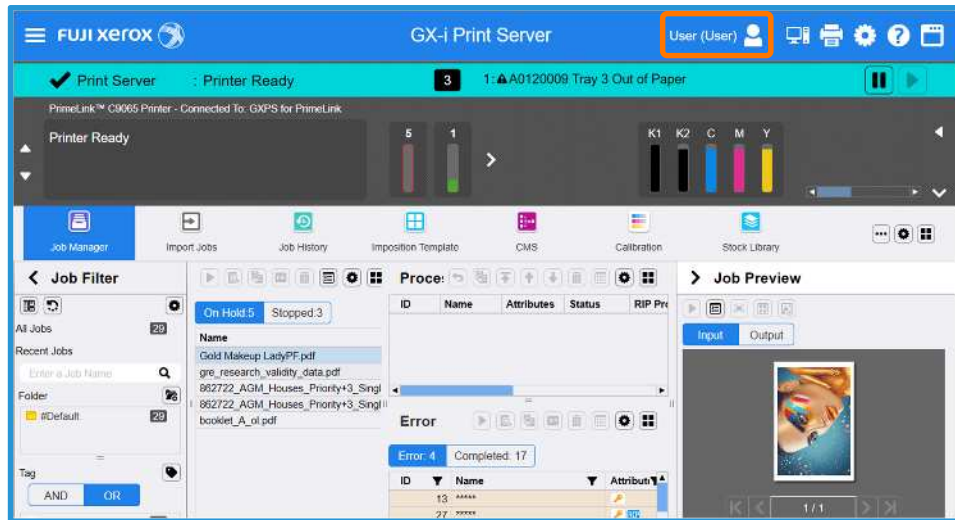


## AFTER

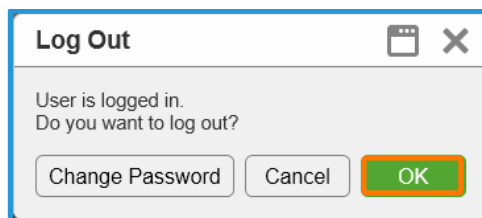
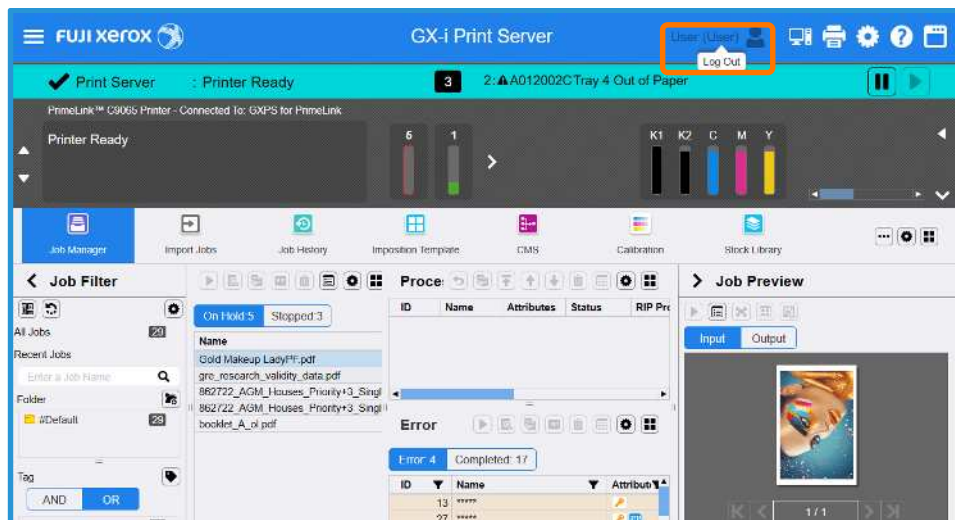


# Login as an Administrator

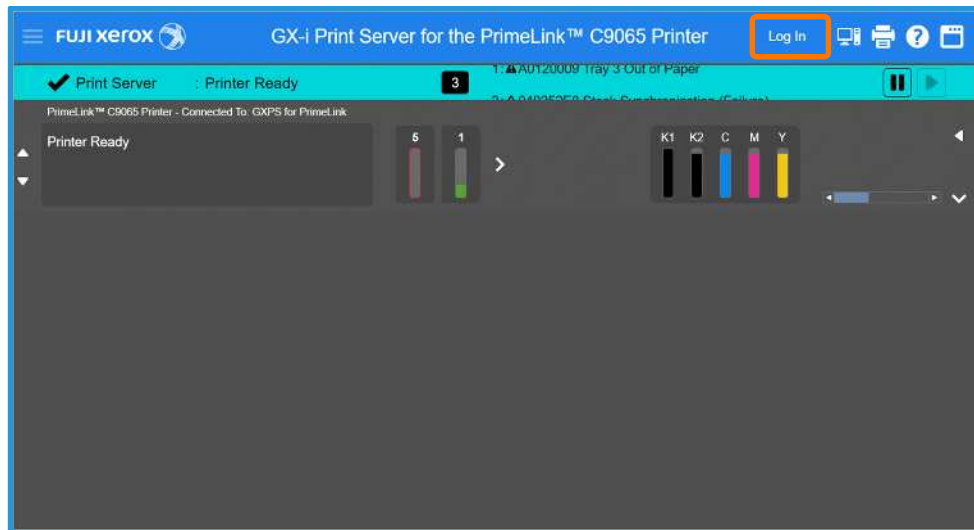
1. Check the login status on the Print Station



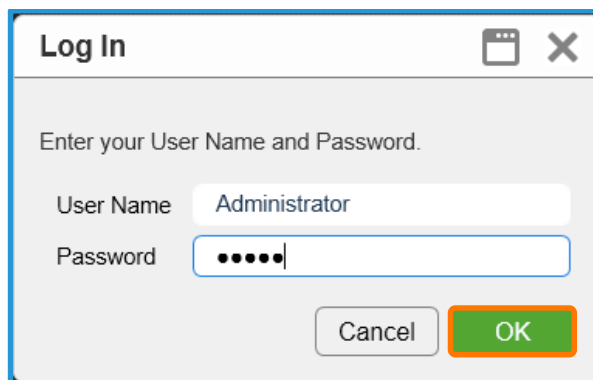
2. If it is logged already, select [Log Out] and click [OK].



3. Click [Log In].



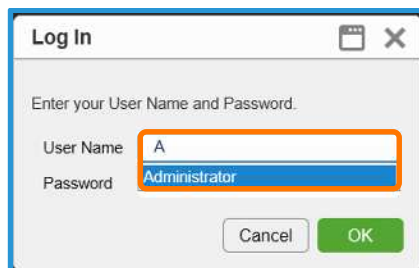
4. Enter "Administrator" and the password. Click [OK].



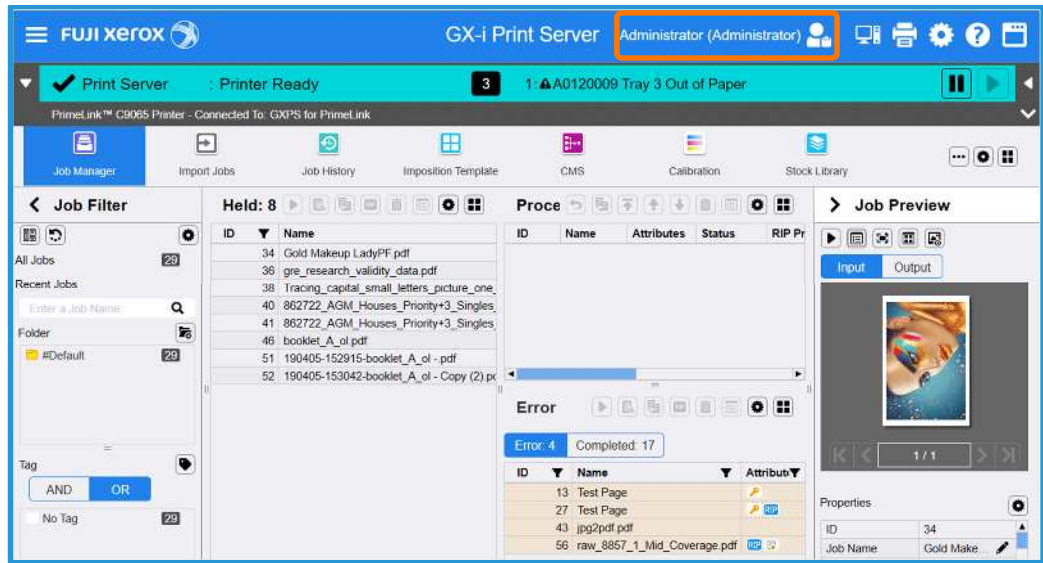
The default User Name: Administrator

Note: Contact your device administrator for the login details. If the login details have been changed or misplaced, contact customer support via Live Chat at <https://support-fb.fujifilm.com>

By entering "a", the selection of "Administrator" will be displayed. You can click it or press a down arrow key and Enter key to enter "Administrator" quickly.



- The **[Log in]** user is displayed in the top left corner of the Print Station application.



Congratulations you have now successfully logged in.