



How To Print Crease Marks

GX Print Server for
PrimeLink™

Version 1.0

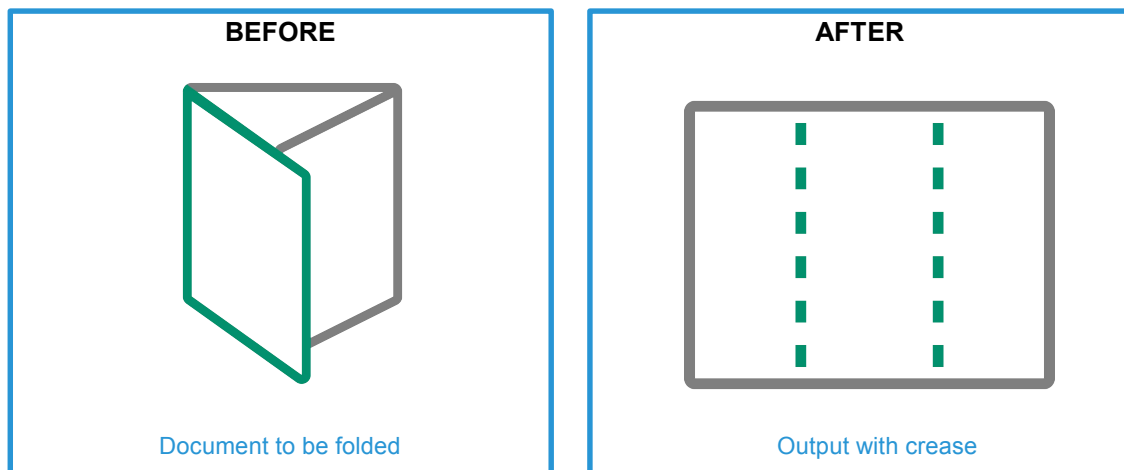
Overview

This exercise will demonstrate the ability to make a crease effect on a job using the GX Print Server. The user has the ability to set crease finishing options using a preset. This exercise will also demonstrate the way to configure custom crease settings while previewing the effect.

Objective

By the end of this exercise users will be able to:

- Find the location of the setting on the GX Print Server
- Select a crease type from preset settings
- Configure a custom crease setting



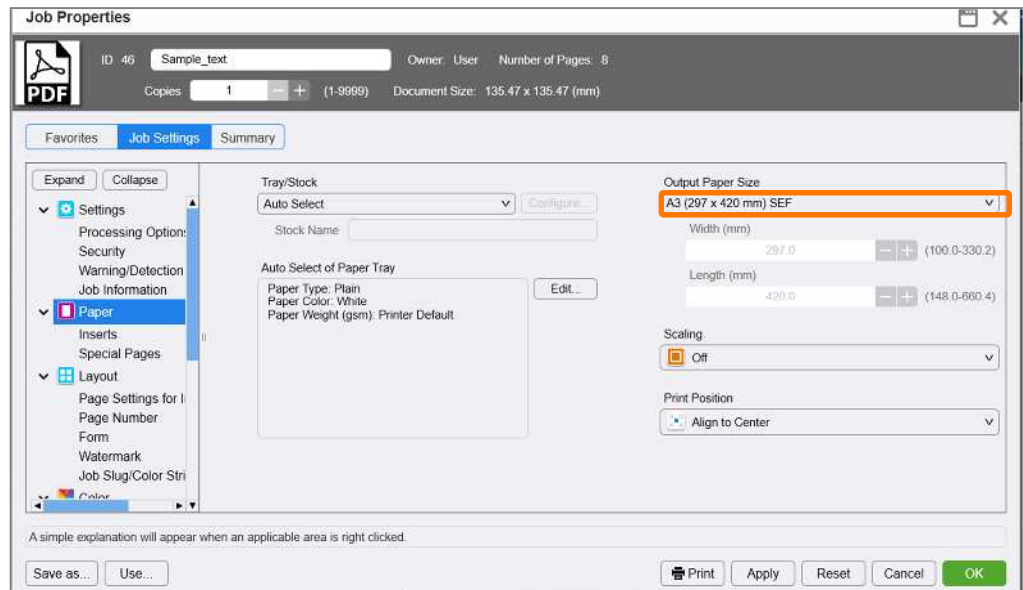
A physical Crease can be applied when the optional Crease/Two-sided Trimmer is installed on the printer.

Configure a Crease Setting Using Preset Types

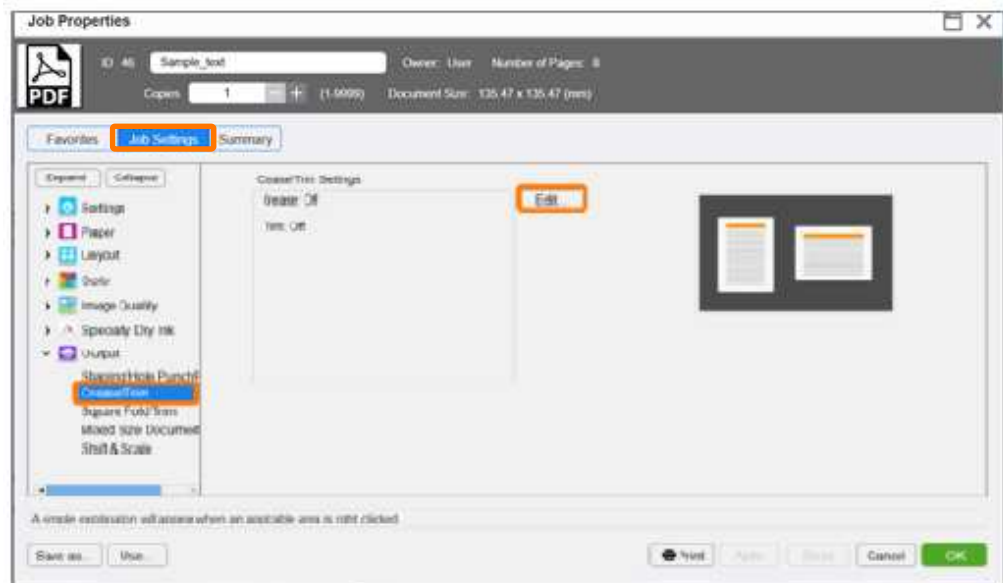


Please note, this How To document is part of a set. If you cannot complete some of the following steps please refer to the other reference documents. i.e “Open the Job Properties” is further explained in the “How to import a job.pdf”. Go to: https://m1support-fb.fujifilm.com/driver_downloads/OTS/OTS_GX_Print_Server_PrimeLink_C9070_EN.html

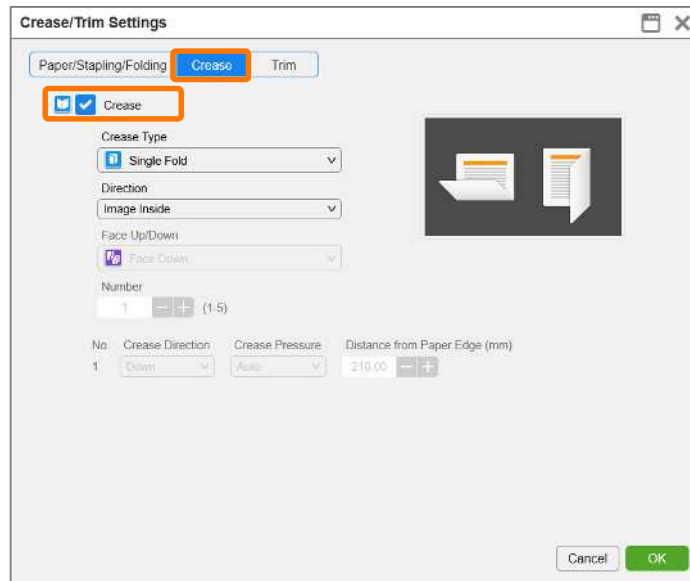
1. Open Job Properties and select [Job Settings] > [Paper]. Then select a specific paper size such as [A3(297x420mm) SEF] (anything other than [Same as Document Size]) within [Output Paper Size].



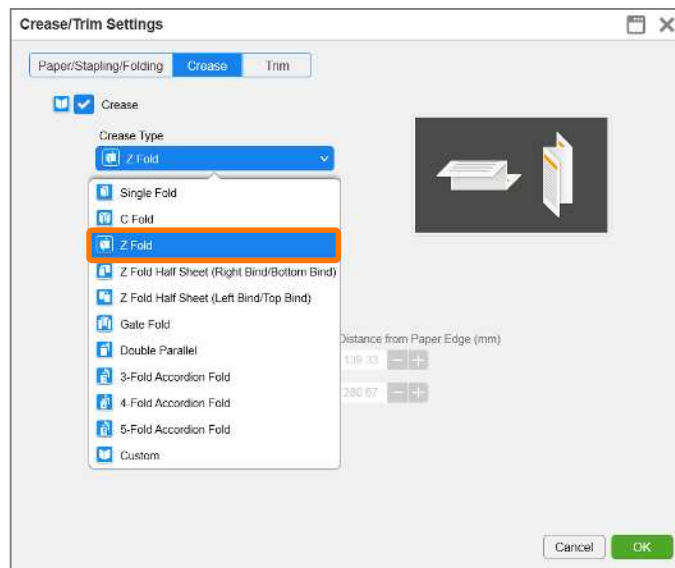
2. Select [Job Settings] > [Output] > [Crease/Trim]. Then click [Edit].



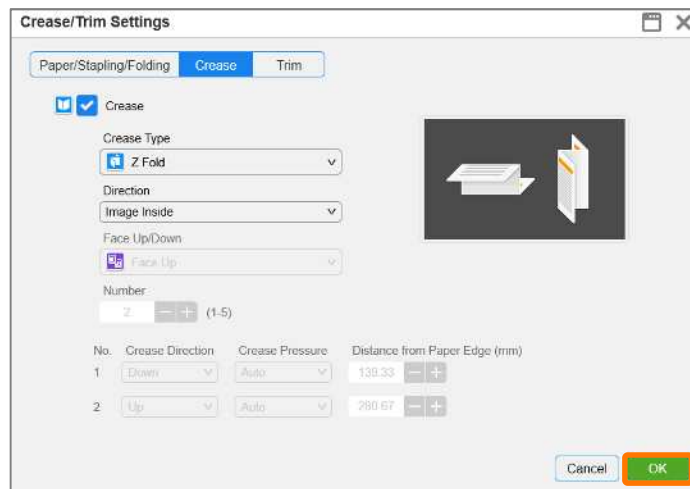
3. Select the **[Crease]** tab, and click the check box to enable **[Crease]**.



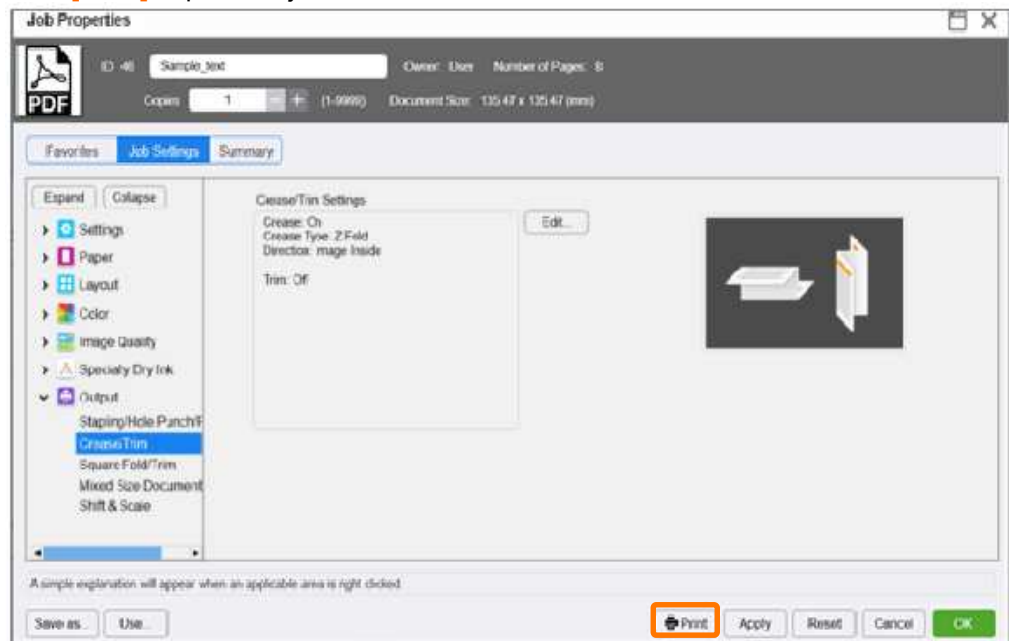
4. Select **[Z-Fold]** within [Crease Type].



5. Click **[OK]**.



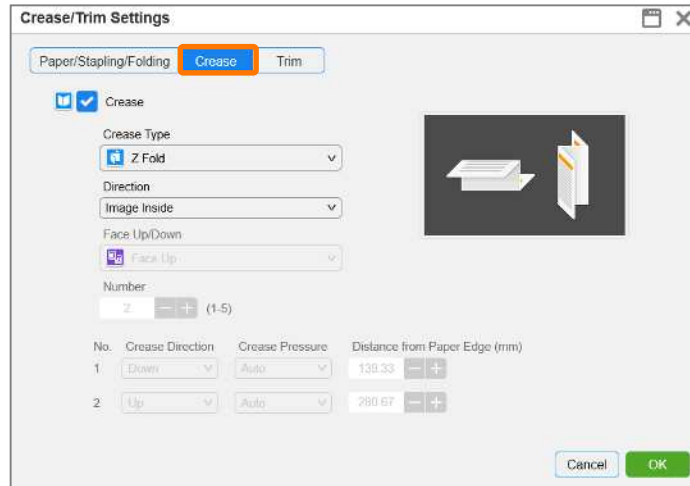
6. Click **[Print]** to print the job.



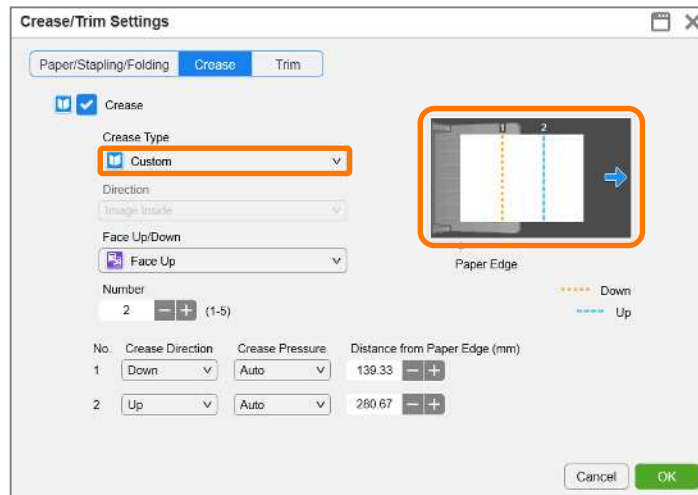
Congratulations you have now completed the task of setting a crease option on the GX Print Server. Please continue to the next exercise to configure a custom crease setting.

Configure a Crease Setting Using Preset Types

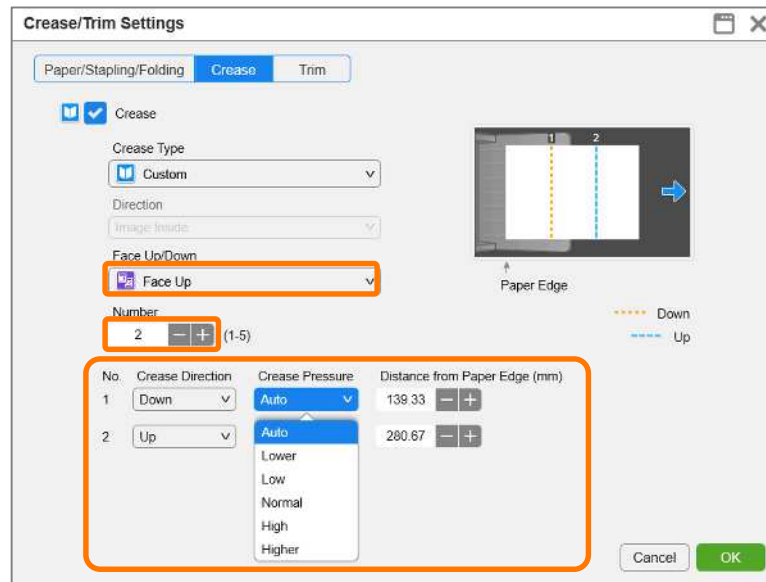
1. Open Crease/Trim Settings window again.



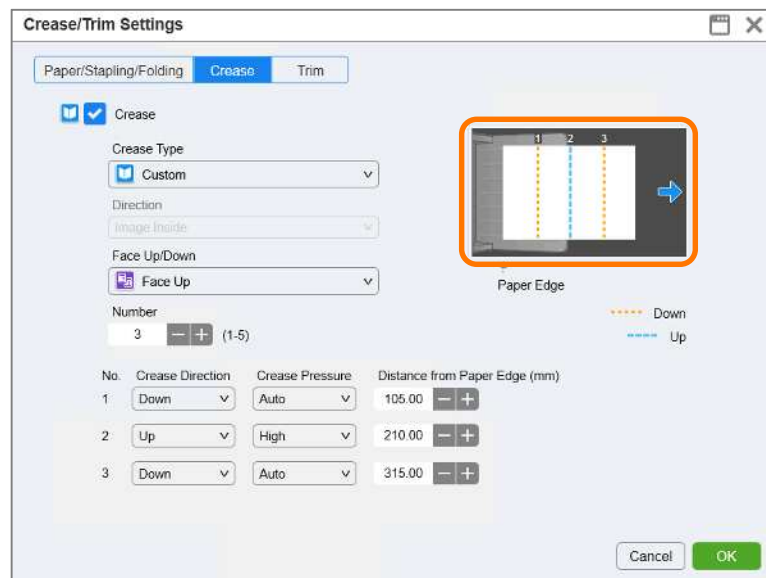
2. Select **[Custom]** in [Crease Type]. A preview of the current setting will be displayed.



- You can adjust either face up or face down within the **[Face Up/Down]** option. As well as the number of creases using the **[Number]** option. You can also configure the direction of the crease using **[Crease Direction]**, the pressure of the crease using **[Crease Pressure]**, and the position of the crease using **[Distance from Paper Edge (mm)]** for each crease.



- The configured settings are reflected in the thumbnail preview.



Congratulations you have now completed this exercise.