



How To Shut Down the GX Print Server Application

GX Print Server for
PrimeLink™

Version 1.0

Overview

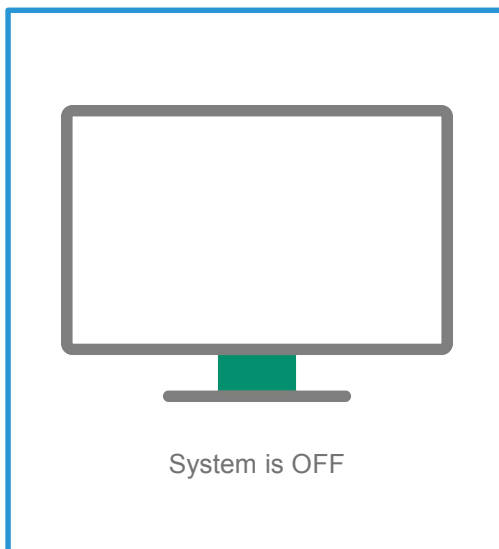
This exercise will demonstrate two methods for shutting down the GX Print Server application. These methods are useful for troubleshooting when resolving a problem. The procedures outlined below are not in order and should be completed as two individual tasks.

Objective

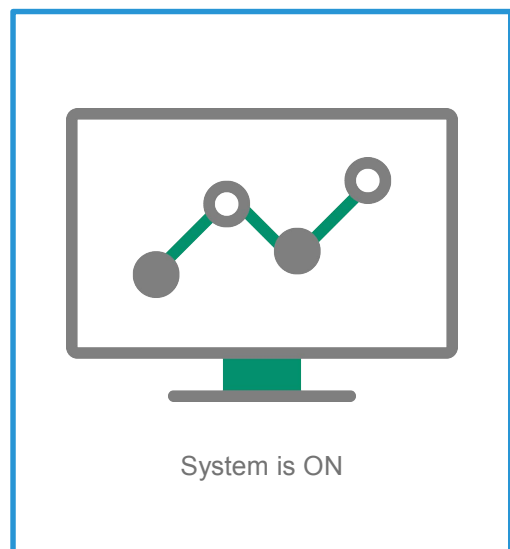
By the end of this exercise users will be able to:

- Conduct the Shut Down procedure for GX Print Server application
- Conduct the Shut Down procedure for Windows

BEFORE



AFTER

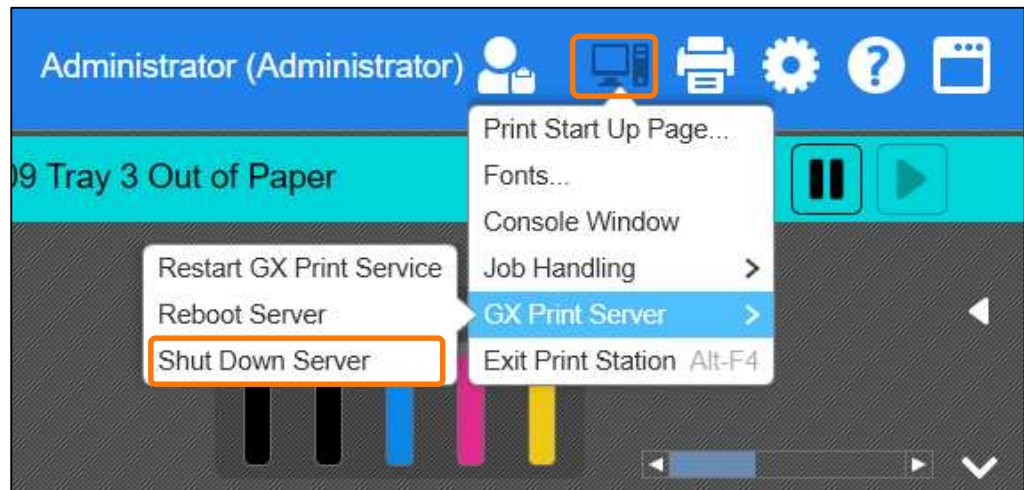


Shut Down



[Shut Down] is only available for a user logged in as Administrator.

1. In the menu, select **[System Control] >> [GX Print Server] >> [Shut Down Server]**



2. Click **[OK]** to accept the warning notification.



3. GX Print Server application will shut down.

Congratulations you have now successfully completed one shut down method.

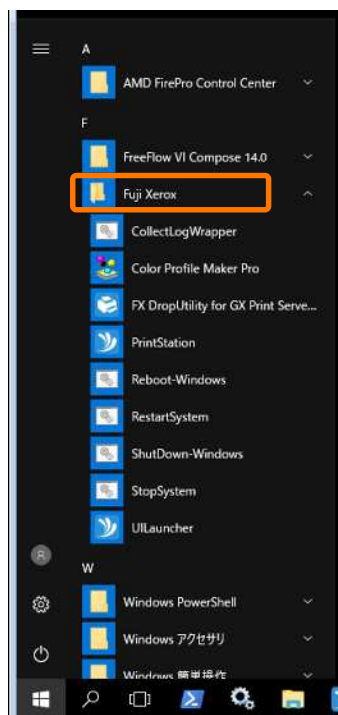
If required, you may start up the application and practice the shut down procedure for Microsoft Windows outlined below.

Shut Down from Windows Menus

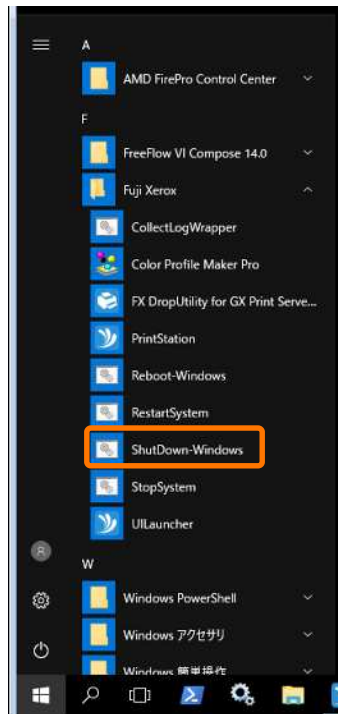
1. Select Windows **[Start]** menu



2. Select **[Fuji Xerox]**



3. Select **[ShutDown-Windows]**



4. GX Print Server will shut down.

You have now successfully completed the shut down method number two.

Congratulations you have now completed this exercise.