



How to Adjust Fine Lines

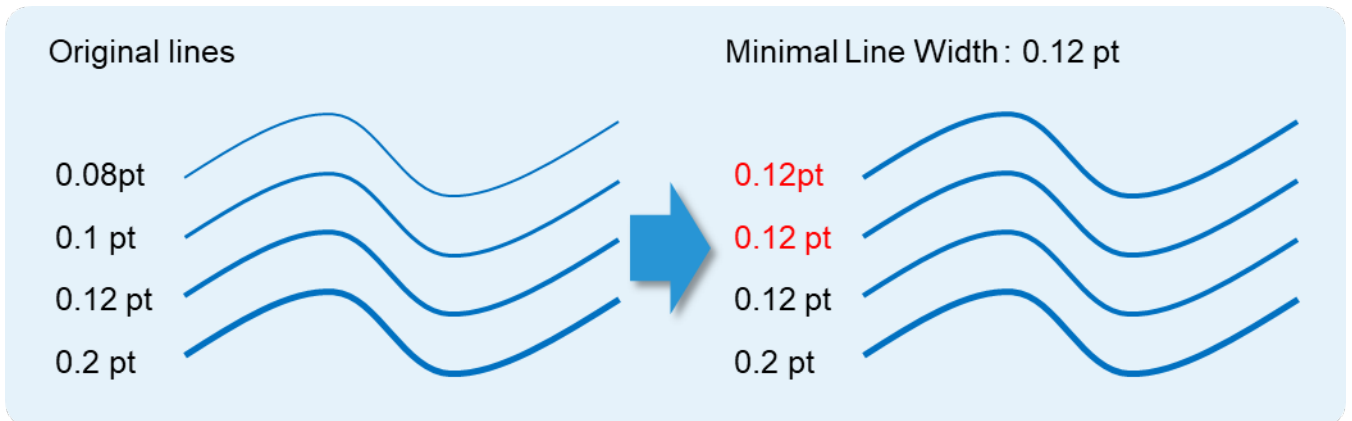
Revoria Flow PC11 for
Revoria Press PC1120

Version 1.0

Overview

This exercise will demonstrate the ability to adjust the default “Minimum Line Width” of fine lines on a printed output. This feature can greatly improve the thickness of fine line detail.

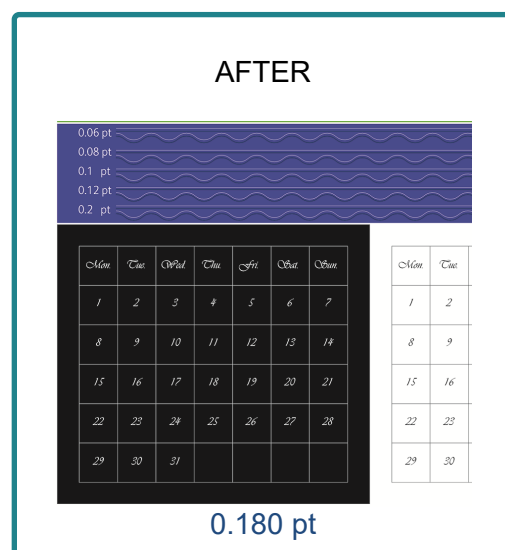
The following is an example of specifying 0.12 pt for Minimum Line Width.



Objective

By the end of this exercise users will be able to:

- Navigate to the location of the setting on the Revoria Flow PC11
- Make an adjustment to the default value
- Compare the results

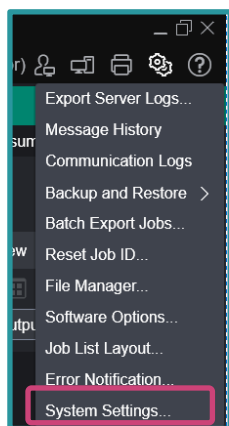


Adjust Fine Lines

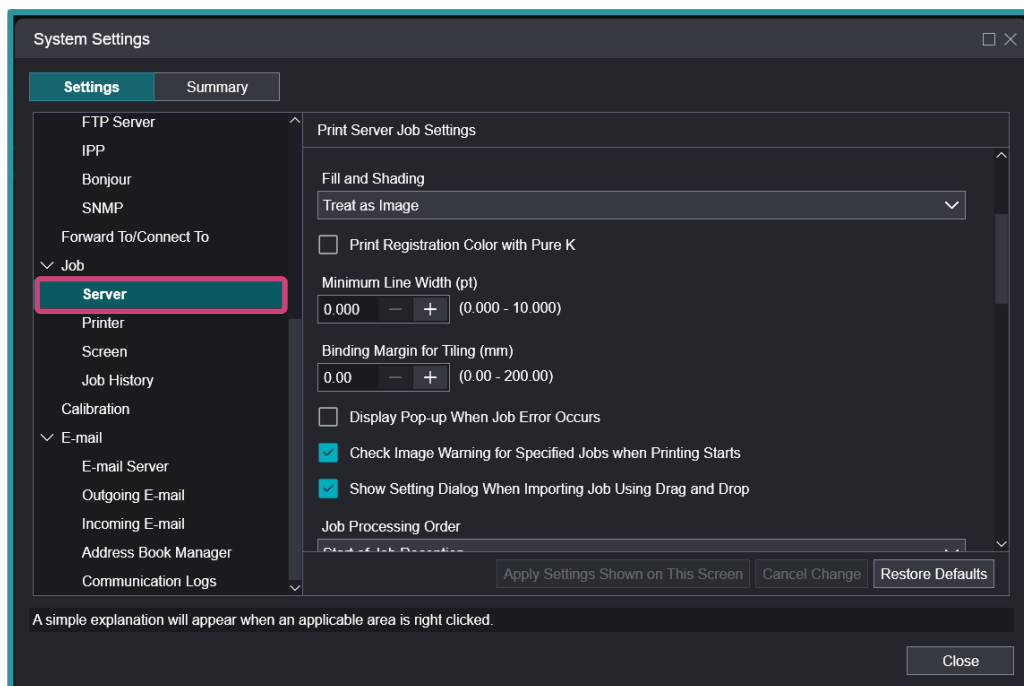
Print a sample file with the default setting before making the following adjustment.



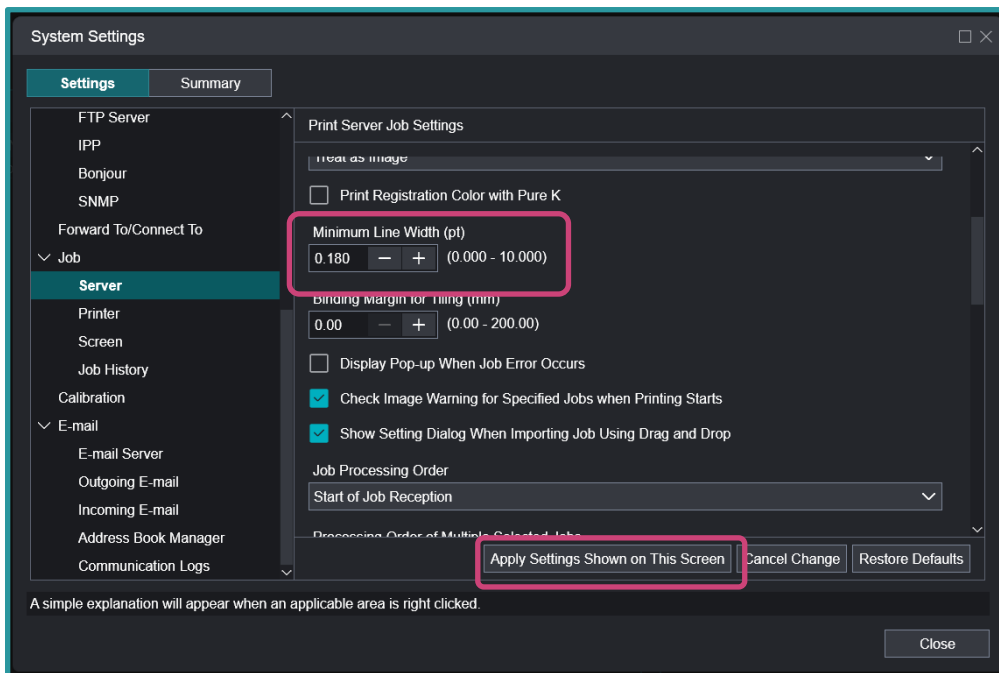
1. Log in as an **“Administrator”**
The default password for Administrator is aaaaaa.
2. Select **Settings > System Settings**.



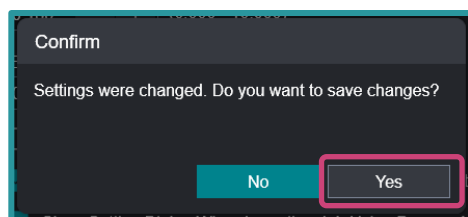
3. In 'Job' menu, select **Server**.



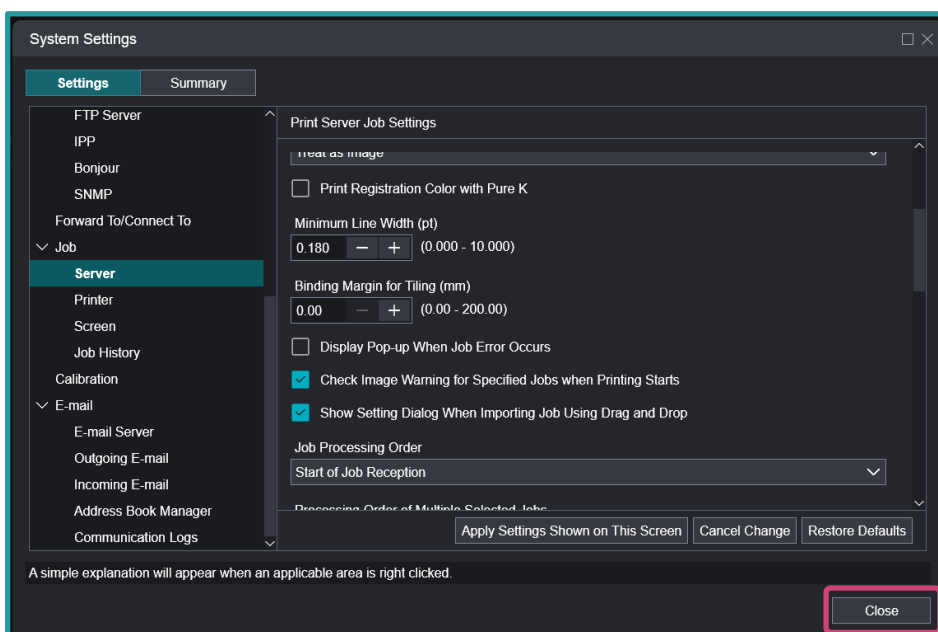
4. Change the Value of 'Minimum line Width' (e.g. 0.180 pt) then click **Apply Settings Shown on This Screen**.



5. Click **Yes** to save changes.



6. Click **Close**.



Print a sample file with your new settings to compare to the defaults.

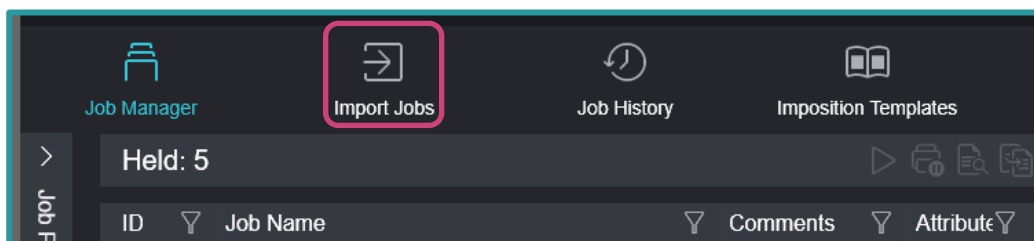


Adjust Fine Lines for Each Job – Job Properties

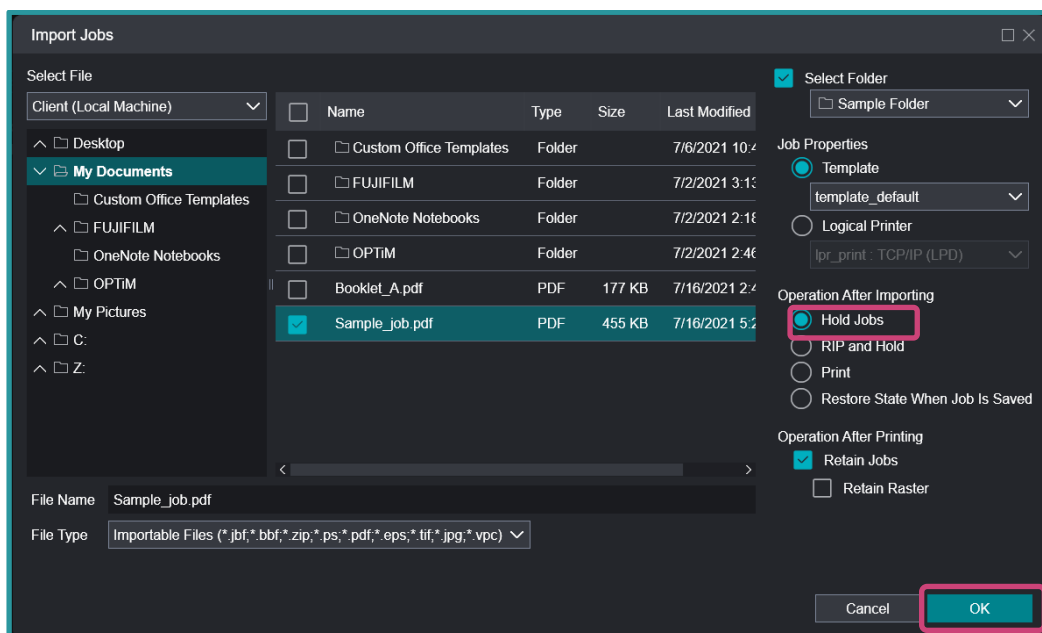
Print a sample file with the default setting before making the following adjustment.



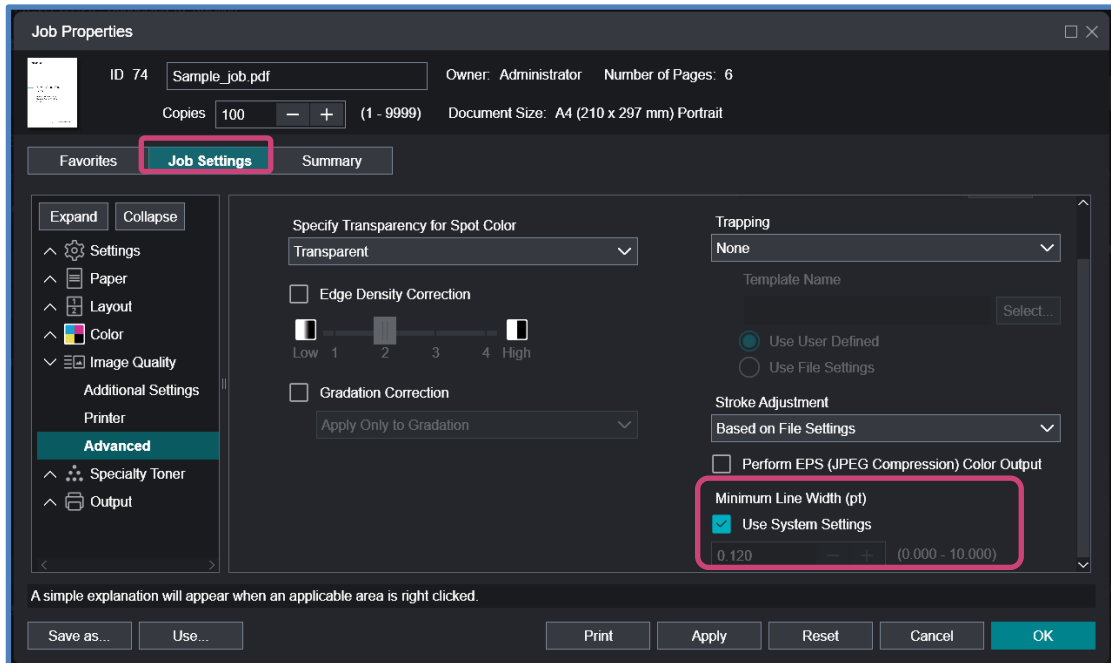
1. In the shortcut area, select **Import Jobs**.



2. Select a sample job to import.
3. In 'Operation After Importing', select **Hold Jobs**, and then click **OK**.



- Double-click the imported job to display the Job Properties.
- Select **Job Settings > Image Quality > Advanced > Minimum Line Width (pt)**.
If "Use System Settings" is ticked, the value at [System Settings] > [Job] > [Server] > [Minimum Line Width] is used.



- Click **Apply**, and then click **Print**.

Compare the sample file with your new settings to compare to the defaults.



Congratulations you have now completed this exercise.

FUJIFILM

For more information, please visit us at
FUJIFILM Business Innovation Asia Pacific Pte. Ltd
support-fb.fujifilm.com

FUJIFILM and FUJIFILM logo are registered trademarks or trademarks of FUJIFILM Corporation