



How to Adjust Text/Line Weight

Revoria Flow PC11 for
Revoria Press PC1120

Version 1.0

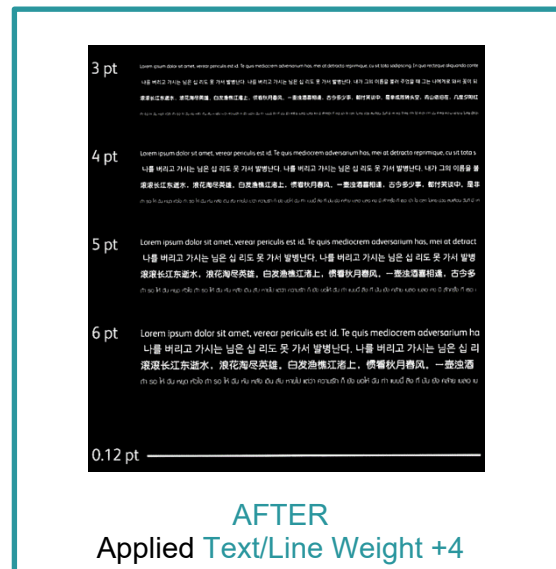
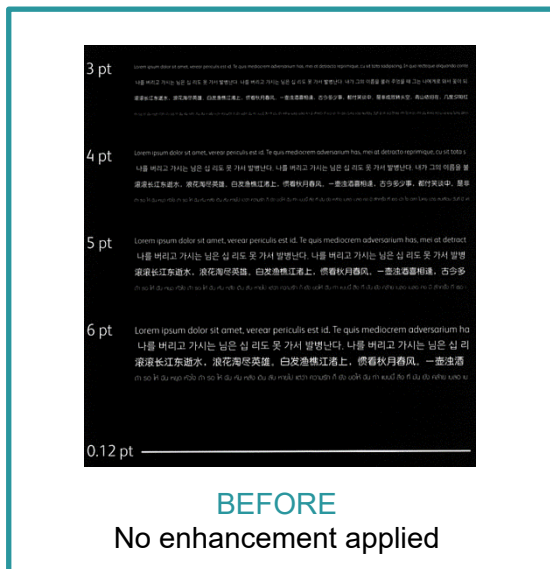
Overview

This exercise will demonstrate the ability to make changes to the default **Adjust Text/Line Weight** setting. This feature can modify the outline to a specified density and achieve clearer, sharper printed results for text/line elements. It can be used to improve image quality when a design has reversed text and fine lines (i.e white text on a black solid).

Objective

By the end of this exercise users will be able to:

- Navigate the feature on the Revoria Flow PC11
- Make an adjustment to the default value
- Compare the results

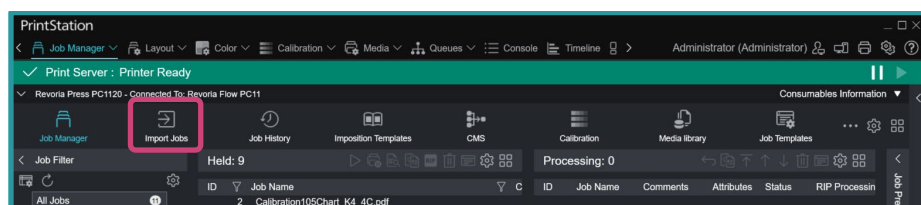


Adjust Text/Line Weight

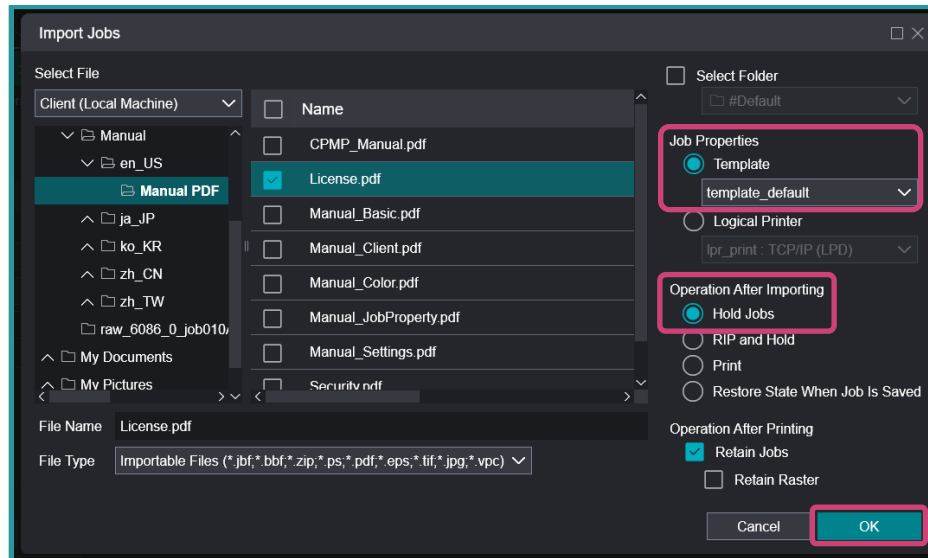


Print a sample file with the default setting before making the following adjustment

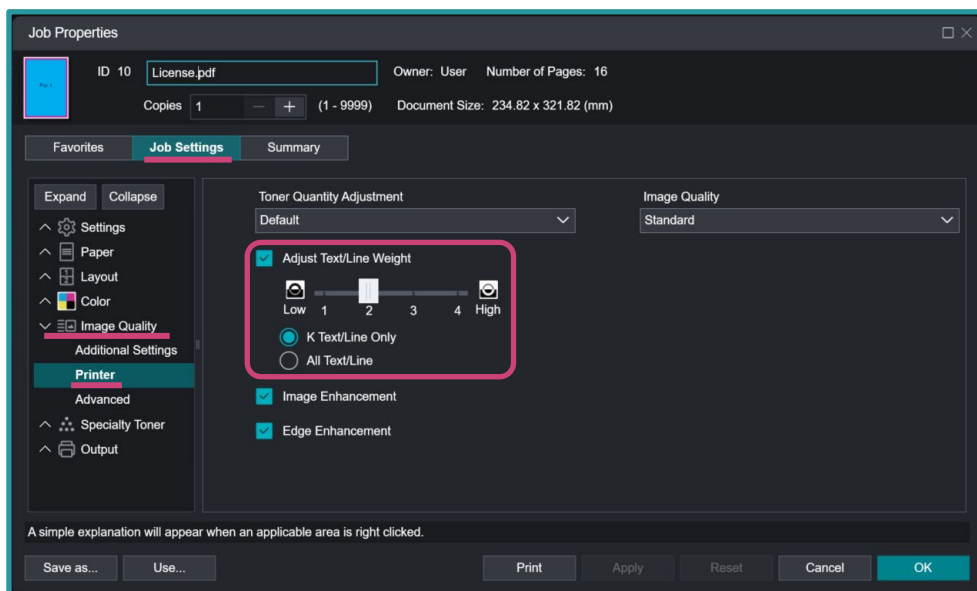
1. In the **Shortcut Area**, select **Import Jobs**.



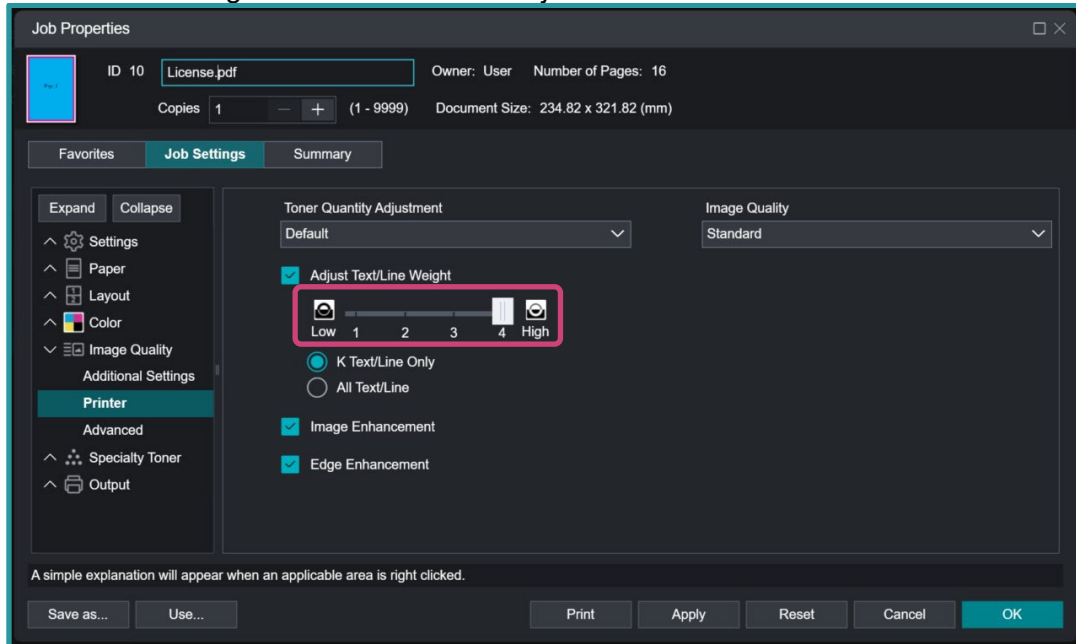
- From the **Import Jobs** window (pop-up window), select the file you want to import. There might be an instance that you will need to browse through the folders to select your file.
- Still on the **Import Jobs** window on the left side, under **Job Properties** > **Template** select **template default**. On the same screen under **Operation After Importing**, select **Hold Jobs**, then press **OK**.



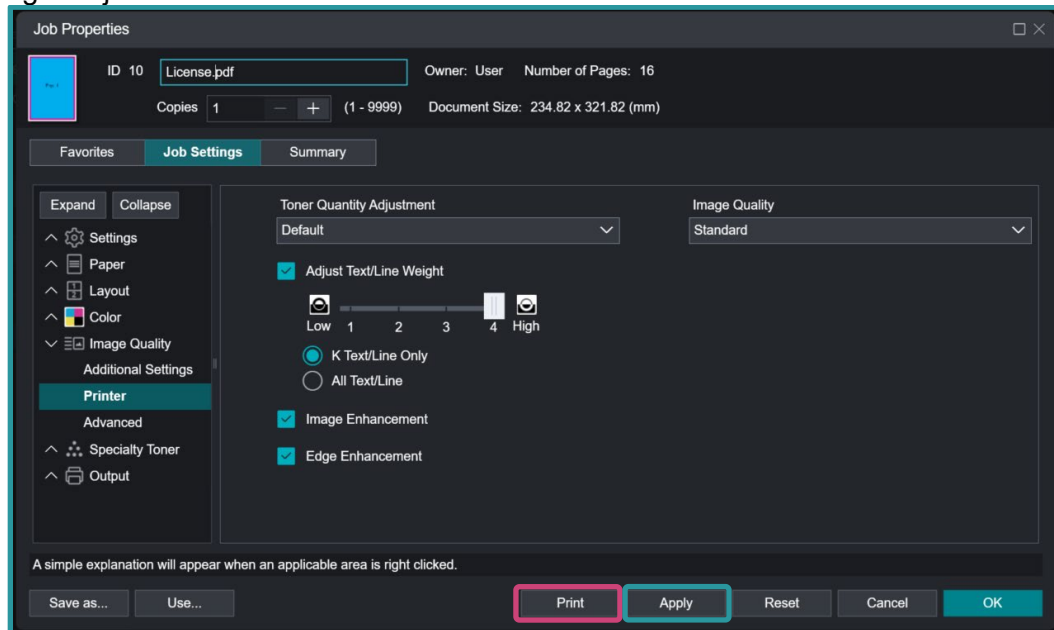
- The job is imported in the **Held** list. Double-click on the imported job to display **Job Properties**.
- From the **Job Properties** window, select **Job Settings** > **Image Quality** > **Printer** > **Adjust Text/Line Weight**.



6. Choose the required level of adjustment for **Adjust Text/Line Weight**. For this exercise set it to **4** which is the highest number for this adjustment.



7. Click **Apply** to set the changes made. Press **Print** to proceed with printing with the text/line weight adjustment.



Print a sample file with the new settings to compare the print sample from the default settings.

Congratulations you have now completed this exercise.



For more information, please visit us at

FUJIFILM Business Innovation Asia Pacific Pte. Ltd

support-fb.fujifilm.com

FUJIFILM and FUJIFILM logo are registered trademarks or trademarks of FUJIFILM Corporation
