

# Quick Drivers Installer (QDI) User Guide

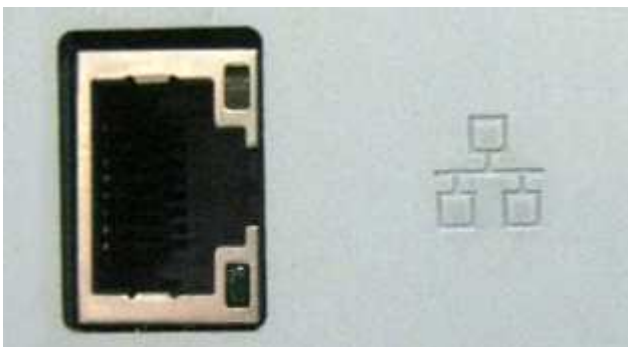
## Before you Begin

1. To find out what version of Windows® you have, and if it is a 32bit or 64bit system, please go to <http://support.microsoft.com> for further assistance.
2. Ensure that the Printer is switched on and connected to your Computer.
3. The Steps in this guide are for both Network (LAN) and USB connected printers. Not all Steps will apply depending on how the Printer is connected.

**USB** For a **USB connected Printer**, the connector and cables are as shown below.



**LAN** For a **Network (LAN) connected Printer**, the connector and cables are as shown below.



## Install Procedure

1. **LAN** **USB** Double click the downloaded driver file.
2. **LAN** **USB** Select 'Agree' and then click 'Next' (Fig.1).

**NOTE:** For a USB Connected Printer, skip to Step 6.



Fig.1

3. **LAN** Click the [Find Printers] button (Fig.2).

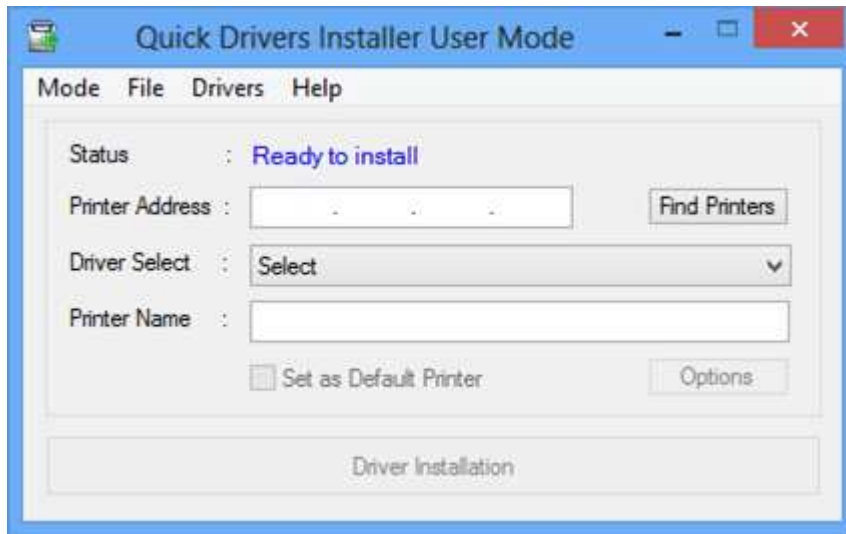


Fig.2

4. **LAN** Click on your Printer and then click the [Select] button (Fig.3).

**NOTE:** If the Printer is not found, click the [Close] button (Fig.3) and proceed to Step 5, else skip to Step 6.

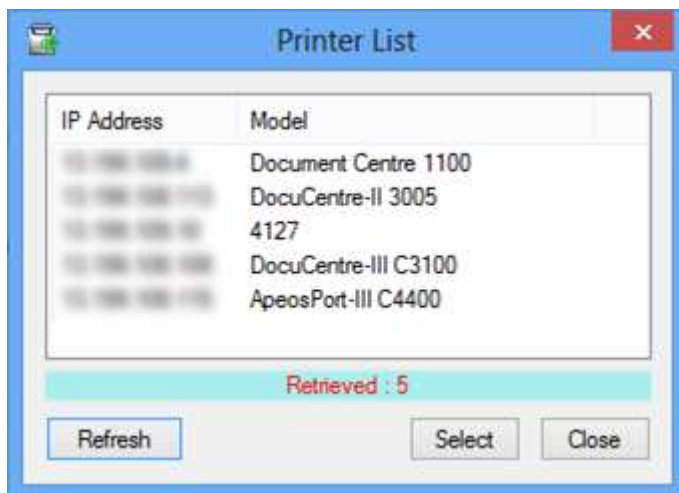


Fig.3

5. **LAN** Enter the IP Address of the Printer in the '**Printer Address**' field (Fig.4).

**NOTE:** To find the IP Address of your Printer, please check the Printer Administrator Guide or go to <http://onlinesupport.fujixerox.com/>, search for your Printer, and see the Self-Help section.

6. **LAN** **USB** Click the '**Driver Select**' drop-down (Fig.4) and select the printer driver.

**NOTE:** 32-bit and 64-bit drivers are provided. Select the appropriate type for your computer.

7. **LAN** **USB** The '**Printer Name**' (Fig.4) as displayed on your computer can be changed (optional).

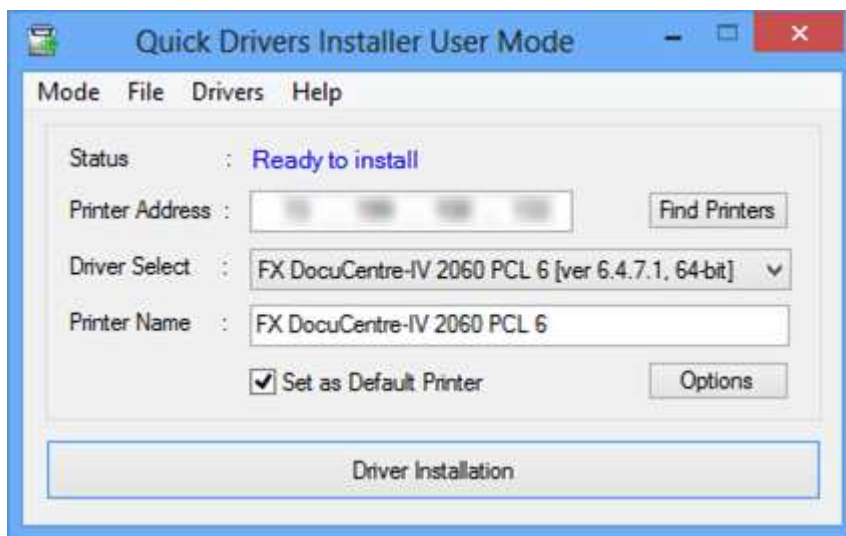


Fig.4

8. **LAN** **USB** Enable the [**Set as Default Printer**] check-box (optional) (Fig.4).

9. **LAN** **USB** Click the '**Driver Installation**' button (Fig.4).

**NOTE:** For USB setup, proceed to Step 10.

**NOTE:** For Network setup, proceed to Step 14.

**NOTE:** The Printer Properties window will be displayed when the installation is complete.

10. **USB** Click the **[OK]** button (Fig.5)

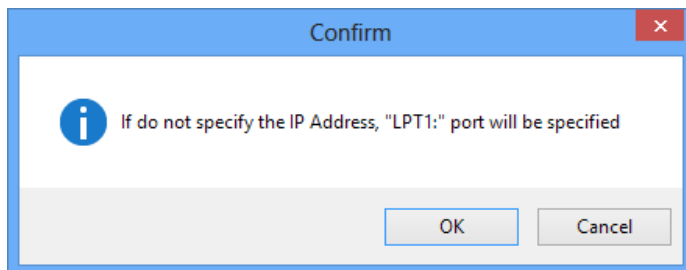


Fig.5

**NOTE:** When the install is complete, the Printer Properties window will be automatically displayed (Fig.6).

11. **USB** Click the 'Ports' tab of the Printer Properties window (Fig.6).

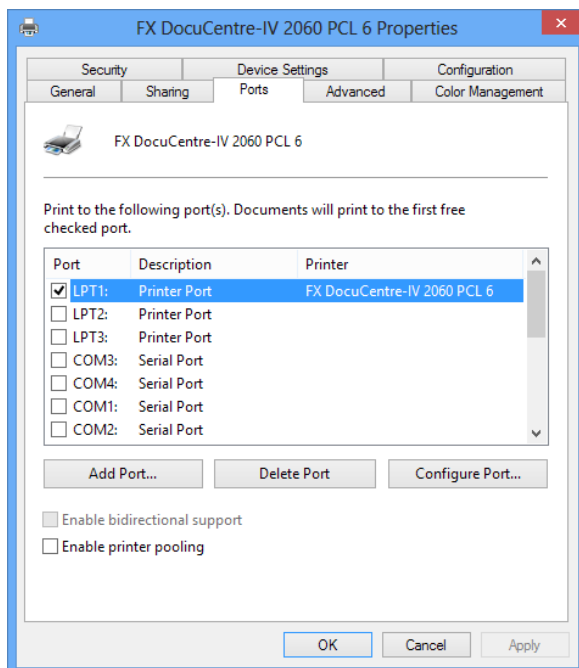


Fig.6

12. **USB** Scroll to find the highest numbered USB port (E.g. USB002) and enable the tick-box next to it (Fig.6).
13. **USB** Click the **[Apply]** button (Fig.6).
14. **LAN USB** Click the **[OK]** button (Fig.6).
15. **LAN USB** Close the 'Quick Drivers Installer' window (Fig.4)